



**University of Wisconsin-Milwaukee**

# **Access to Success: A Comprehensive First Year Program**

**Cohort: Fall 2005**

**One Year Review**





# Access at UW-Milwaukee

- What it means to be an access institution
- Access to resources for success and retention



# Profile of UWM Students

## UWM Student Profile 1995 and 2005

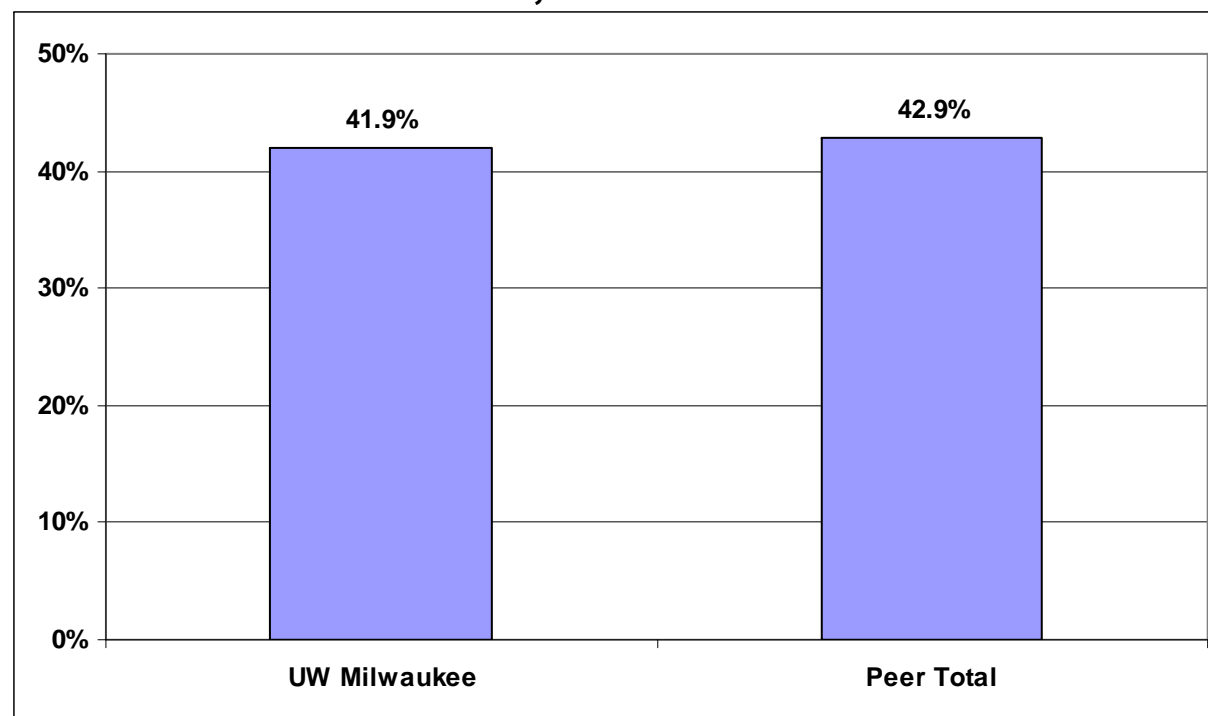
	1995	2005	% Change
Freshman Applications	4,737	11,261	138%
New Freshmen	1,988	4,300	116%
New Freshmen of Color*	386	713	85%
New Transfers	1,405	1,507	7%
Diversity*	3,461	4,285	24%
Undergraduate Enrollment	17,700	23,389	32%
Graduate Enrollment	4,708	4,657	-1%
Total Enrollment	22,408	28,046	25%
New Freshman Average ACT	21.53	21.89	2%

\*Includes African American, American Indian, Asian, Southeast Asian and Hispanic of all students.



# Graduation Rates

## Six Year Graduation Rates UW-Milwaukee and Peer Institutions 1999 Full-time, First-time Students

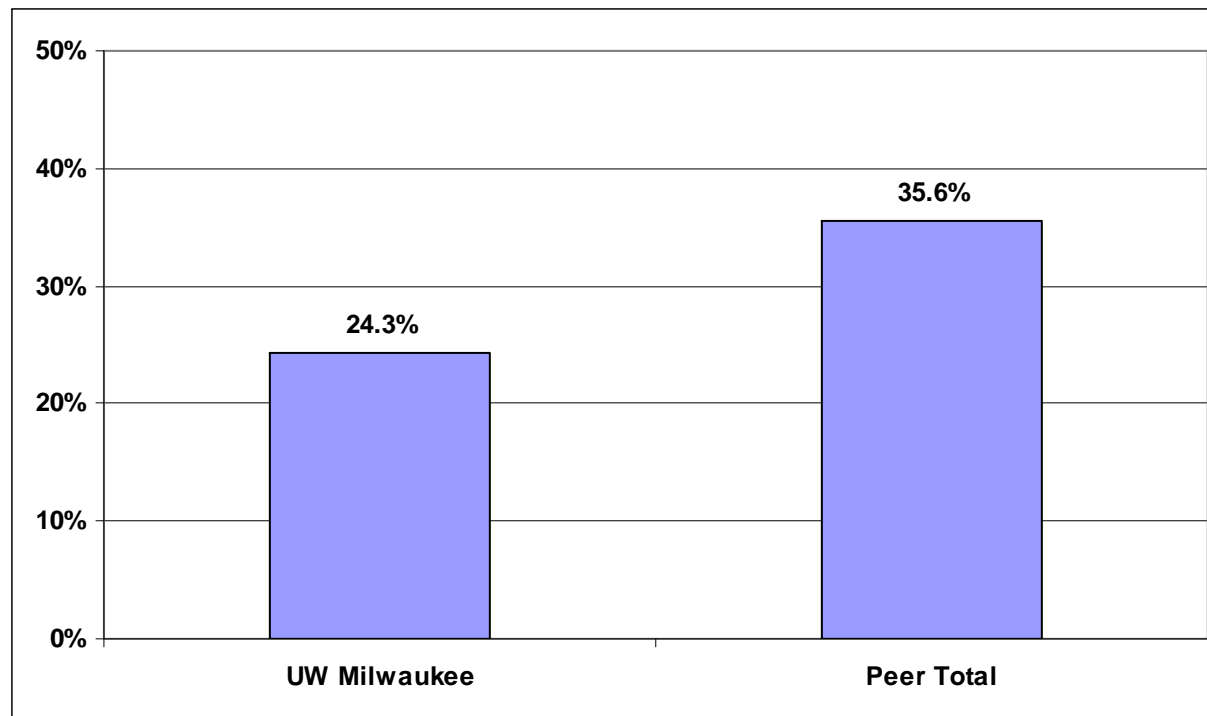


Data Source: IPEDS, Graduation Rates, 2005



# Gap in Graduation Rates

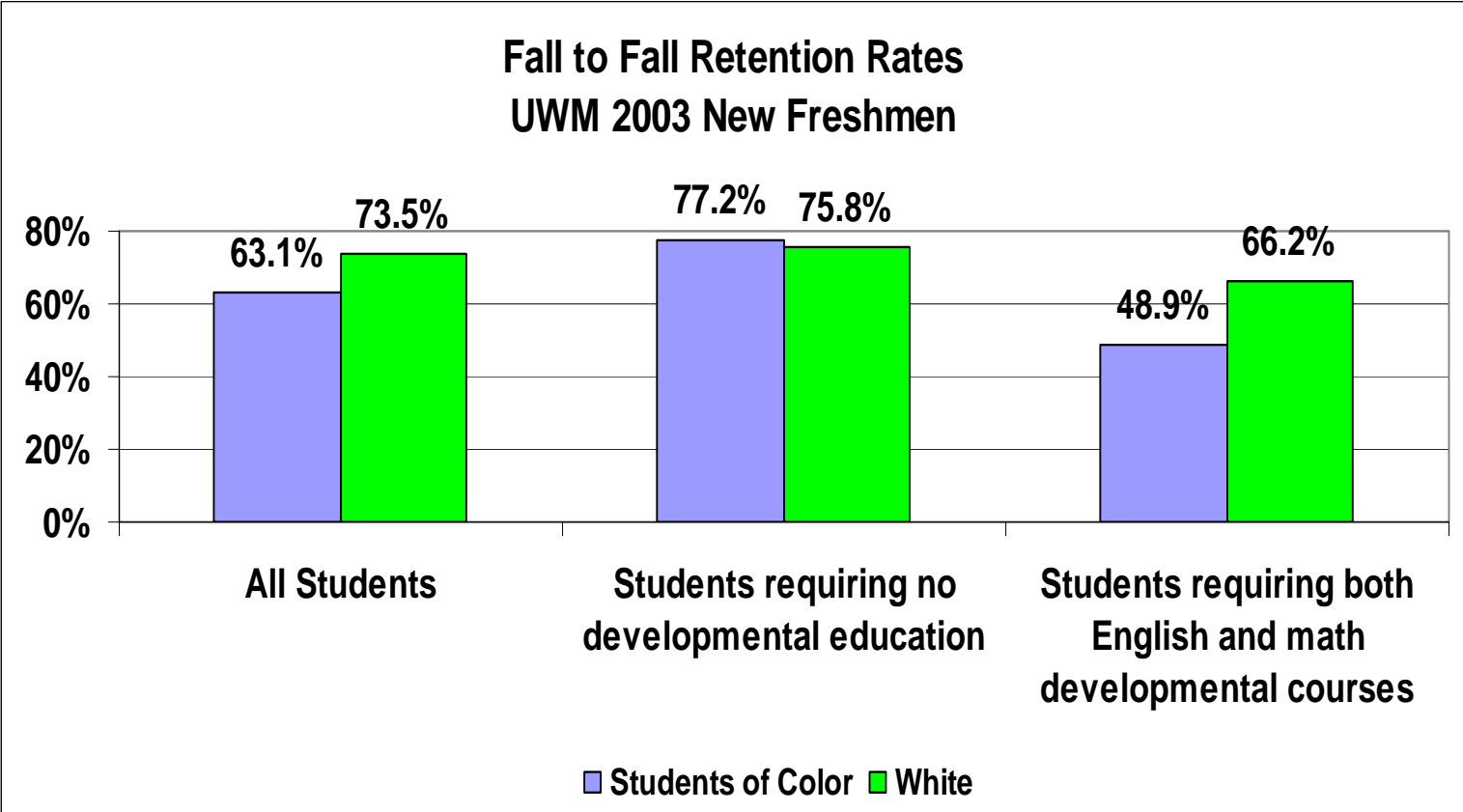
Six Year Graduation Rates  
UW-Milwaukee and Peer Institutions  
1999 Full-time, First-time Under-represented Minorities\*



\*Includes Black, non-Hispanic, American Indian or Alaskan native, and Hispanic  
Data Source: IPEDS, Graduation Rates, 2005

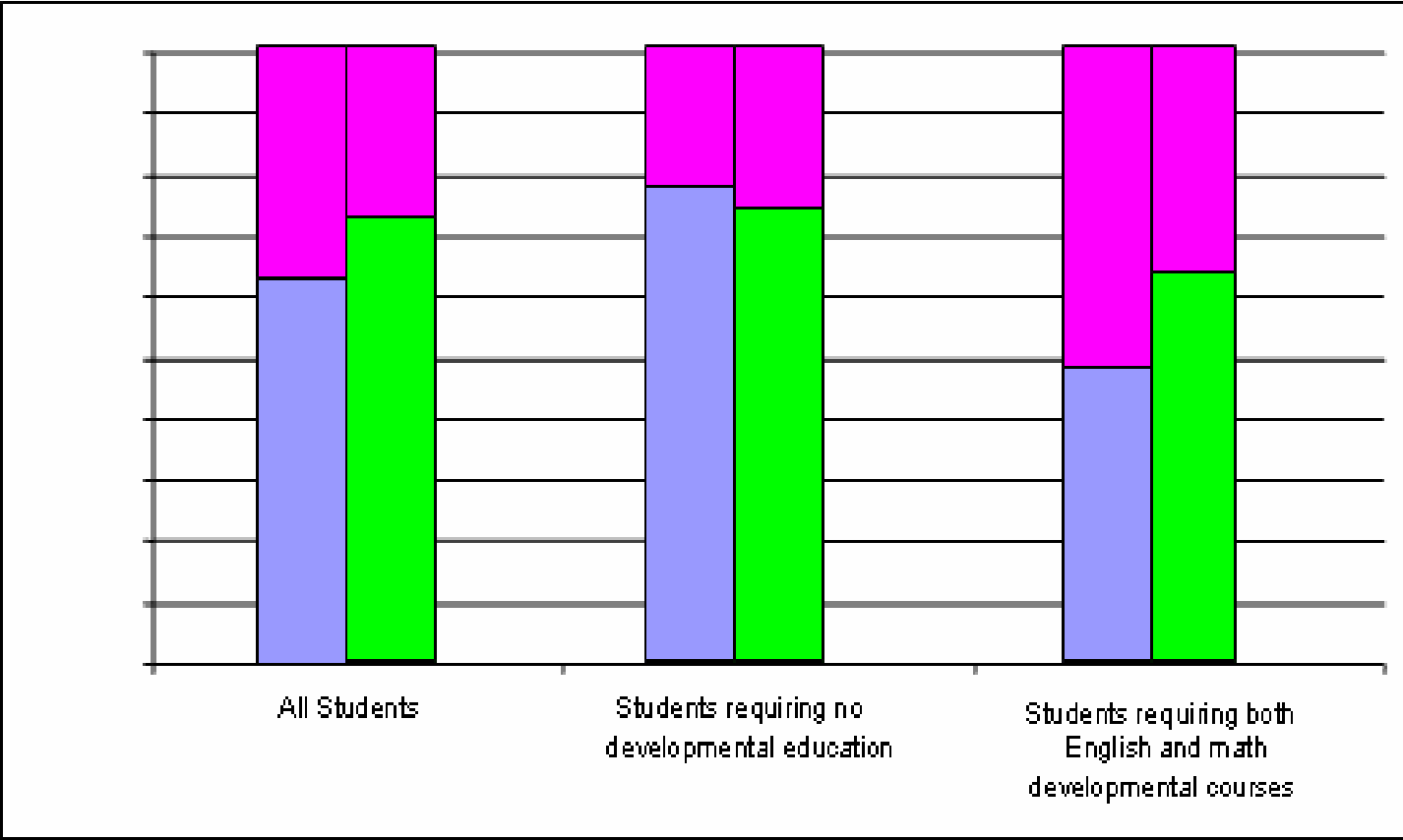


# Foundation Data for Access to Success





# Goal for Access to Success



Students of Color



White

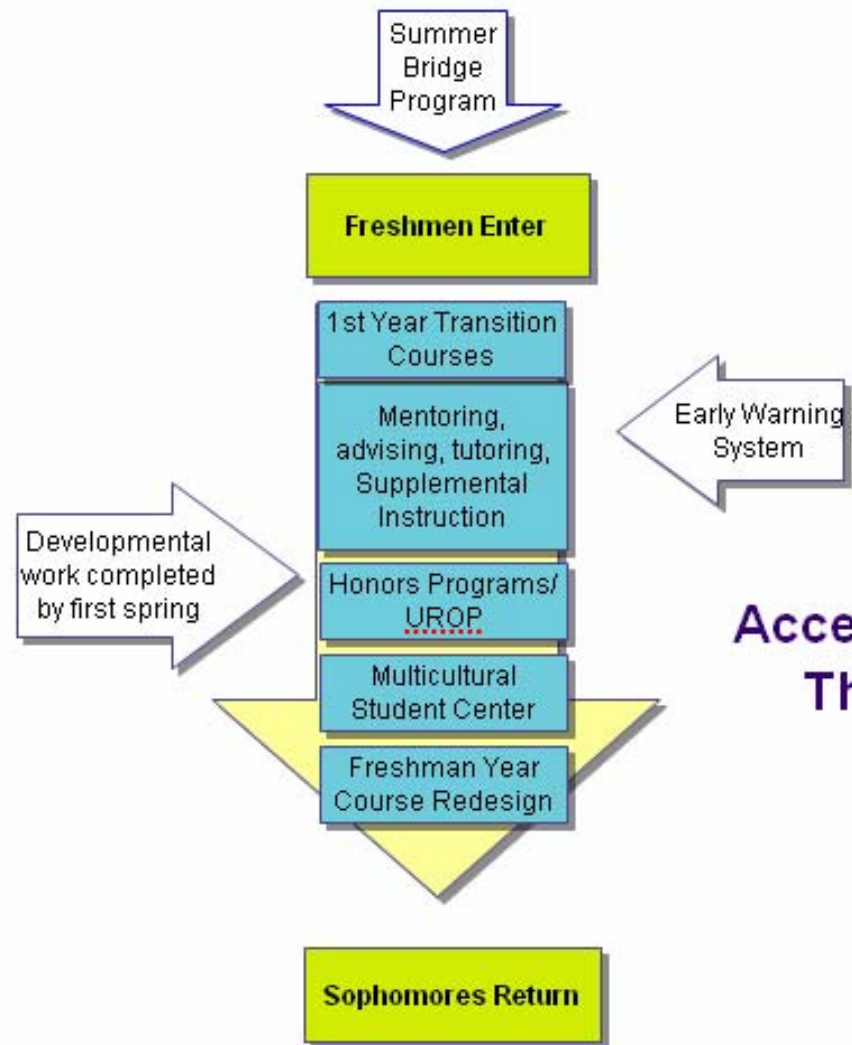


Elimination of the gap and increased retention



# Attracting and Enrolling an Achieving/Diverse Pool of Students

Applicant to Enroll Yield									
		Fall 03		Fall 04		Fall 05		Fall 06	
		#	%	#	%	#	%	#	%
ACT=> 25	Applications	2,215	23%	2,600	25%	2,670	24%	2,672	24%
	Enrollees	886	24%	908	24%	954	22%	904	22%
	Yield Rates	40%		35%		36%		34%	
Targeted Minority	Applications	1,482	15%	1,708	16%	1,908	17%	1,912	17%
	Enrollees	504	13%	546	15%	634	15%	557	14%
	Yield Rates	34%		32%		33%		29%	



## Access to Success: The First Year



# Early Warning System

- Progress reports due at 4<sup>th</sup> week
- Reports generated on over 96% of Fall 2005 new freshmen during 2005-06 academic year
- Those for whom reports were generated, both satisfactory and unsatisfactory, performed and were retained at a higher rate compared to those for whom no report was filed.
- Role of advisor critical, especially for those with unsatisfactory reports



**Early Intervent Instr Feedback - Microsoft Internet Explorer**

File Edit View Favorites Tools Help

Back Forward Stop Refresh Home Search Favorites Media AOL.com Yellow Pages Maps Shopping Quotes Weather Movies

Address: <http://testpaws.uwm.edu/servlets/clientservlet/v8test/?cmd=start&> Go Links >>

**UWM** Home Help Sign Out

**Instructor Feedback** | **Advisor Feedback**

**Term:** 1040 Spring 2004    **Institution:** University Wisconsin-Milwaukee  
**Class Nbr:** 72361    **Section:** 001    **Subject:** MATH    **Catalog Nbr:** 90  
**Description:** Basic Mathematics

**Instructor:** Kaiser, Kelly A    [Return to Class Roster](#)

**New Freshmen Currently Enrolled**    First 1-8 of 8 Last

**Campus ID:** [Redacted]    **Academic Career:** Undergrad

**Instructor Feedback**    View All    First 1 of 1 Last

**Feedback Date:** 08/30/2005    **Student Progress:** Un satisfactory

**Communicated with Student**

**Instructor Reasons**

- Attendance
- Assignment
- Quiz/Exam
- Participate

**Class Comments:** [Text Area]

---

**Campus ID:** [Redacted]    **Academic Career:** Undergrad

**Instructor Feedback**    View All    First 1 of 1 Last

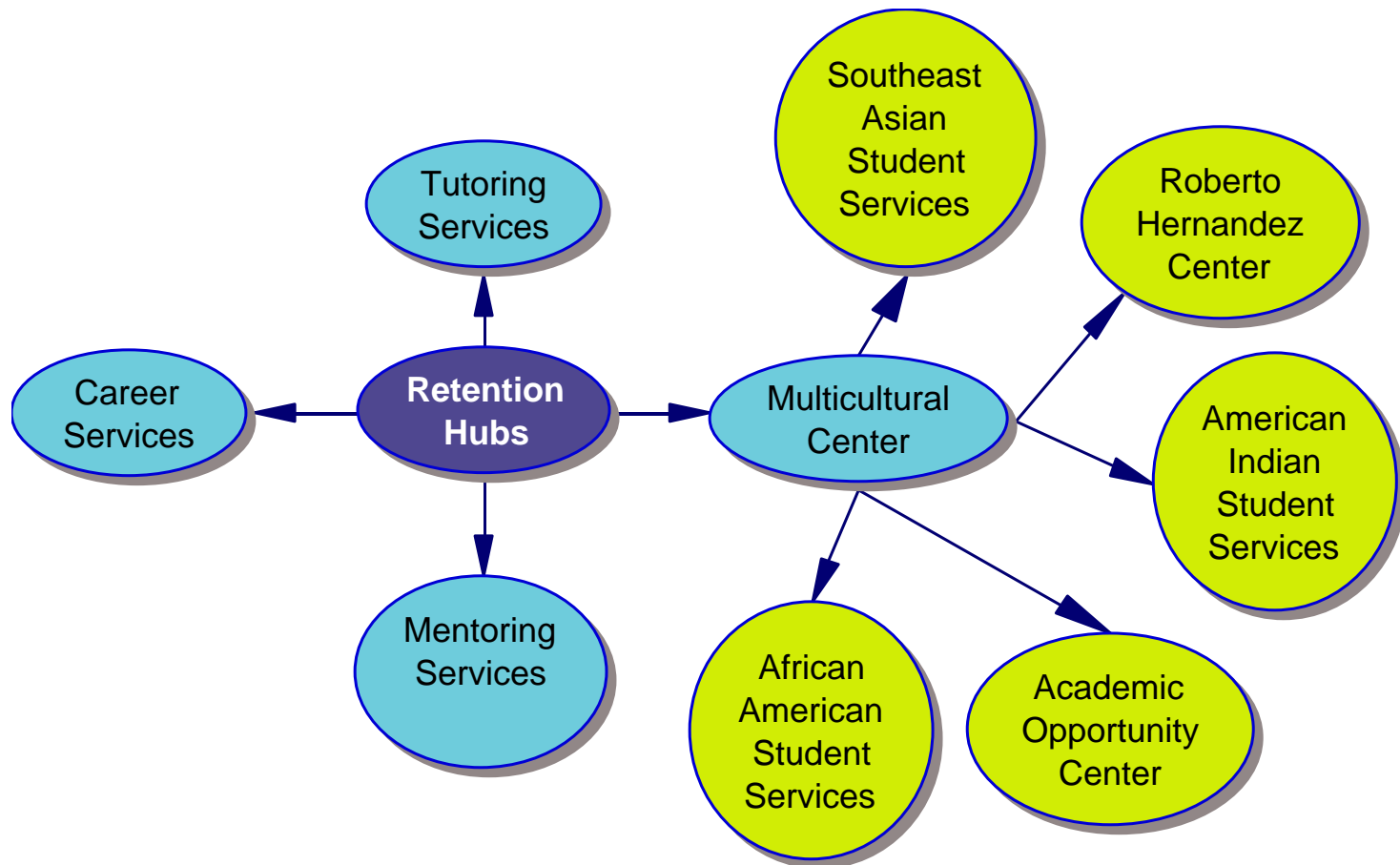
**Feedback Date:**    **Student Progress:** [Dropdown]

Done    Internet

Start    Sea...    Live3...    Inbo...    Agen...    https...    scree...    Early...    Docu...    1:04 PM



# Access to Success: Hubs





# Access to Success Umbrella

- Freshman Mentoring Network
- Supplemental Instruction
- Tutoring
- First Year Transition Courses
  - Study Skills
  - Freshman Seminars
  - Introduction to the Profession
- Early Warning System
- Academic Advising
- Academic Opportunity Center
- Summer Bridge Programs
- Residence Halls
- Learning Communities
- Course Re-designs
- Honors
- UROP



# A2S Summary Results

		2005 Cohort	
		4300	
		Satisfactory Performance	Enrolled Fall 06
Overall Outcome		68.9%	68.7%
Ethnicity	Targeted Populations	47.9%	55.8%
	Non-Targeted Population	72.6%	70.9%
Math and English Placement	College Placement	75.6%	72.8%
	1 or more pre-college placements	57.2%	61.4%
	Math 90 placement	49.8%	57.1%

# A2S Summary Results: Interventions



		Supplemental Instruction		FYTC: Freshman Seminar		Tutoring	
		123		984		565	
		Satisfactory Performance	Enrolled Fall 06	Satisfactory Performance	Enrolled Fall 06	Satisfactory Performance	Enrolled Fall 06
Overall Outcome		91.1%	83.7%	81.4%	78.7%	80.4%	76.8%
Ethnicity	Targeted Populations	71.4%	71.4%	64.0%	69.1%	58.4%	65.6%
	Non-targeted Populations	95.1%	86.3%	84.3%	80.2%	86.6%	80.0%
Math and English Placement	College Placement	95.5%	86.6%	84.4%	80.4%	88.8%	82.7%
	1 or more pre-college placements	85.7%	80.4%	74.1%	74.5%	72.2%	71.2%
	Math 90 placement	80.0%	80.0%	70.1%	79.1%	61.6%	66.3%
		No Supplemental		No FYTC: Freshman		No Tutoring	
		4177		3316		3735	
		Satisfactory Performance	Enrolled Fall 06	Satisfactory Performance	Enrolled Fall 06	Satisfactory Performance	Enrolled Fall 06
Overall Outcome		68.3%	68.2%	65.2%	65.7%	67.2%	67.4%
Ethnicity	Targeted Populations	47.1%	55.3%	43.4%	52.1%	45.4%	53.4%
	Non-targeted Populations	71.9%	70.4%	69.1%	68.1%	70.6%	69.6%
Math and English Placement	College Placement	75.1%	72.4%	72.6%	70.2%	74.1%	71.7%
	1 or more pre-college placements	56.2%	60.7%	53.3%	58.4%	53.8%	59.2%
	Math 90 placement	48.6%	56.3%	45.9%	53.0%	46.7%	54.8%



# A2S Highlights

- Supplemental Instructions:
  - First-year retention rates 16% higher than those who did not participate in SI
  - Satisfactory performance 23% higher than those who did not participate in SI
- Freshman Seminars:
  - First-year retention rates 13% higher compared to those not in a seminar and 10% higher than overall cohort
  - Percentage of freshman of color retained 17% higher for those enrolled in a freshman seminar and 13% higher than overall rate
  - Academic performance of seminar participants exceeded that of cohort

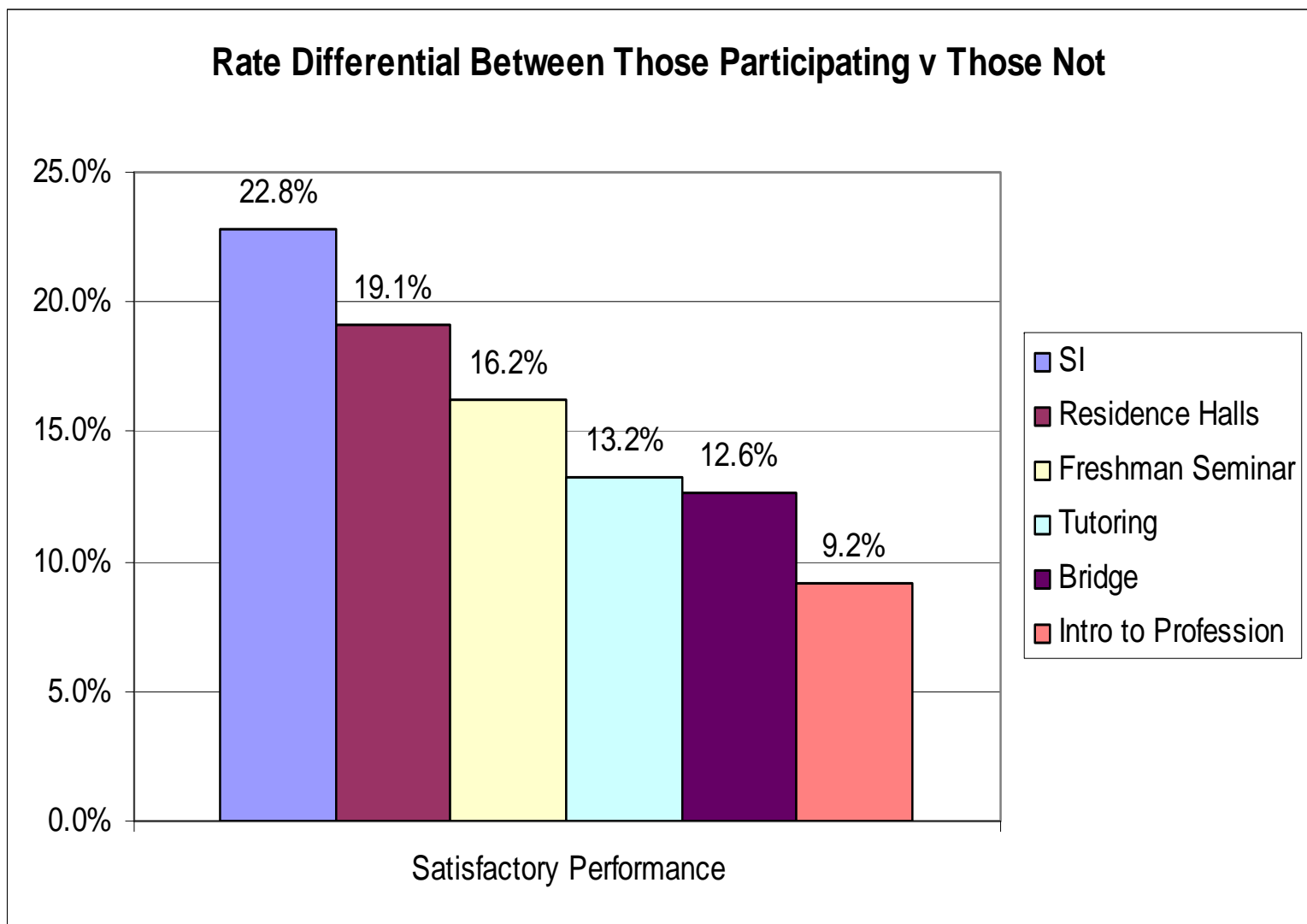


# A2S Highlights

- Summer Bridge (available to AOC and SSS students):
  - First-year retention rates 15% higher compared to peers
  - Satisfactory performance 13% higher compared to peers
  - Higher retention rate than overall cohort
- Tutoring:
  - First-year retention rate 9% higher compared to those who did not receive tutoring
- Introduction to the Profession
  - First-year retention rate 7% higher compared to those who did not take an Introduction to the Profession course
- Residence Halls
  - First-year retention rate 15% higher compared to commuters
  - African-American freshmen residing in residence halls had a higher retention rate than that for white students overall

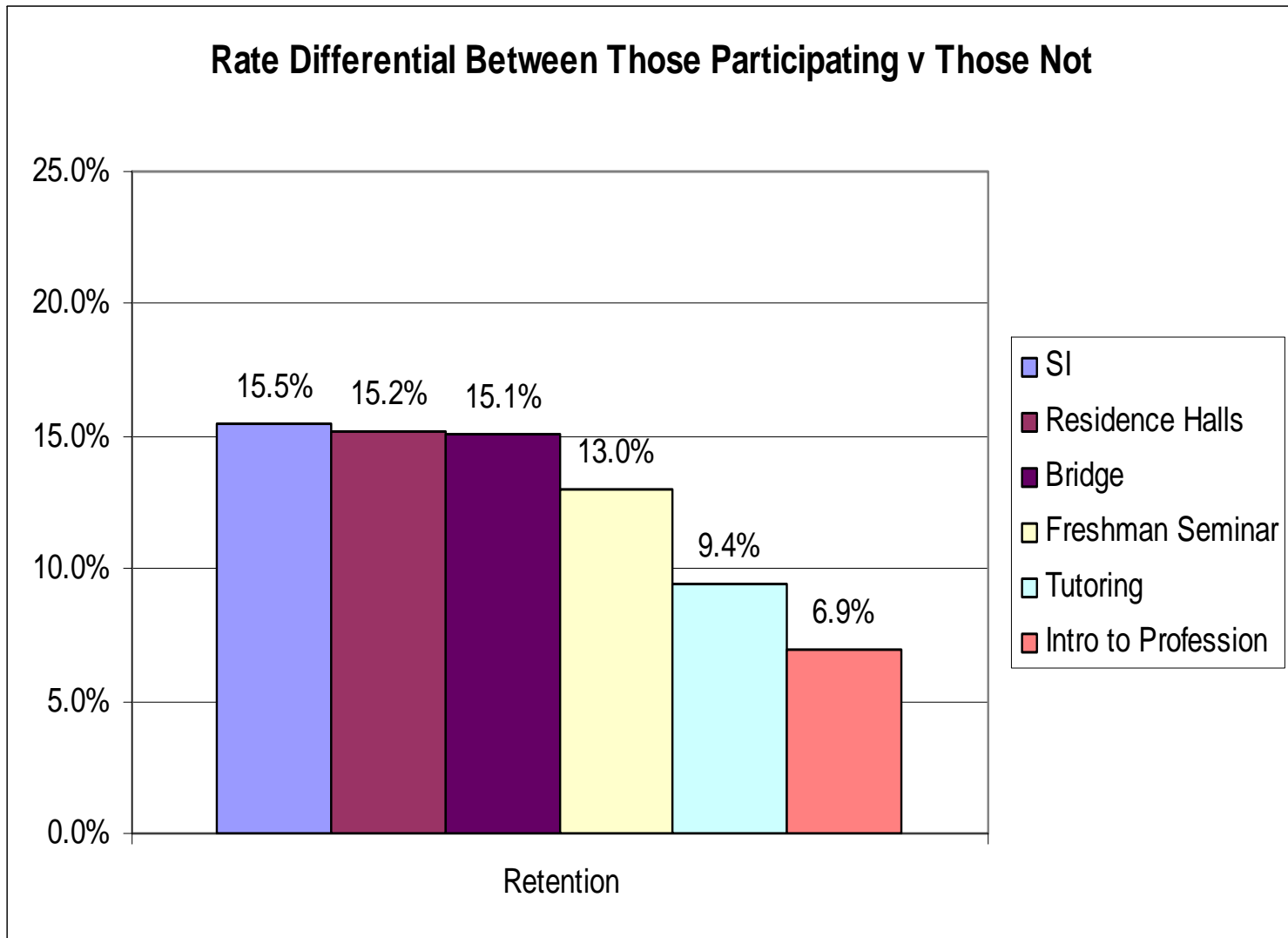


# Satisfactory Performance





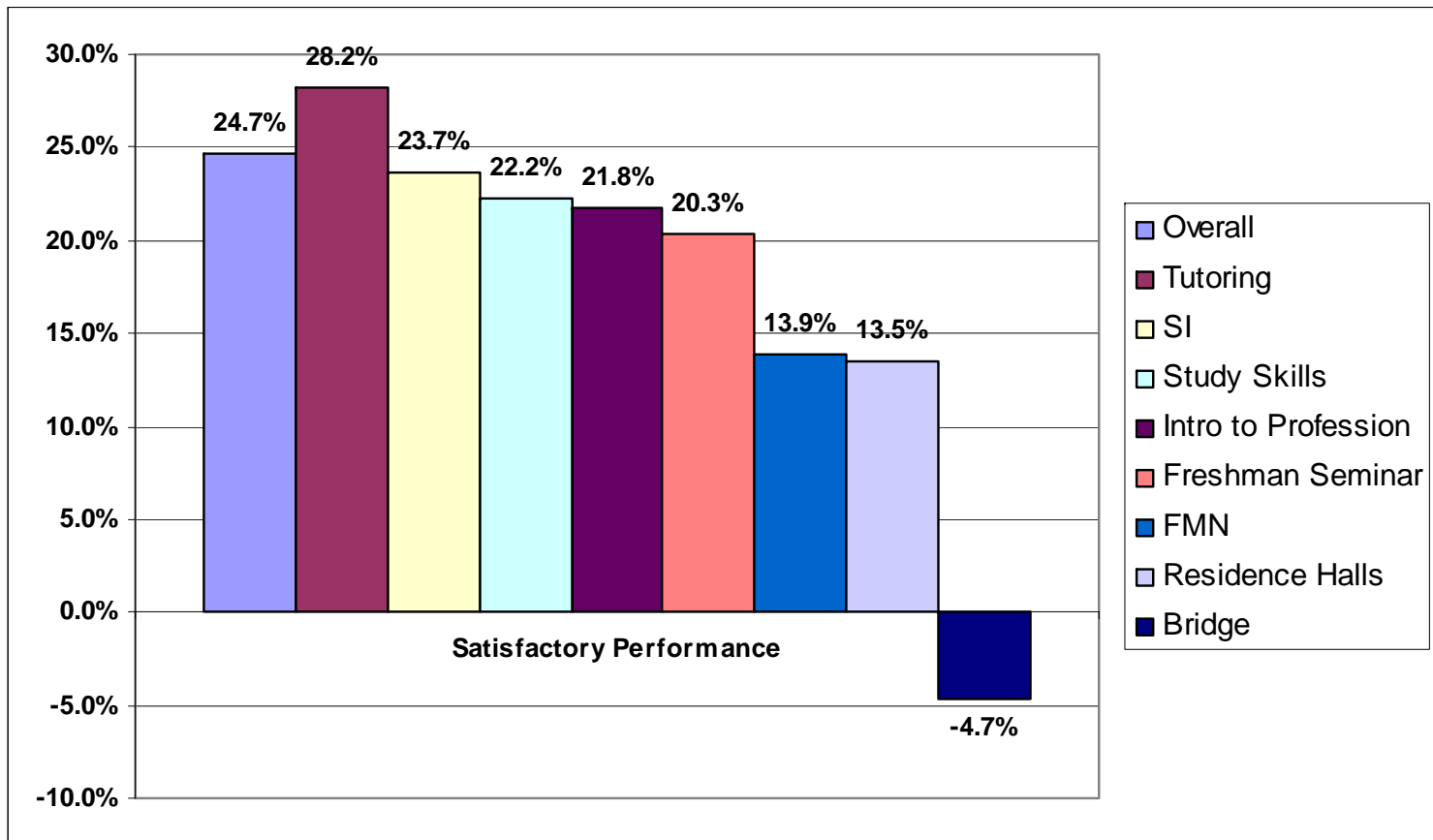
# Retention





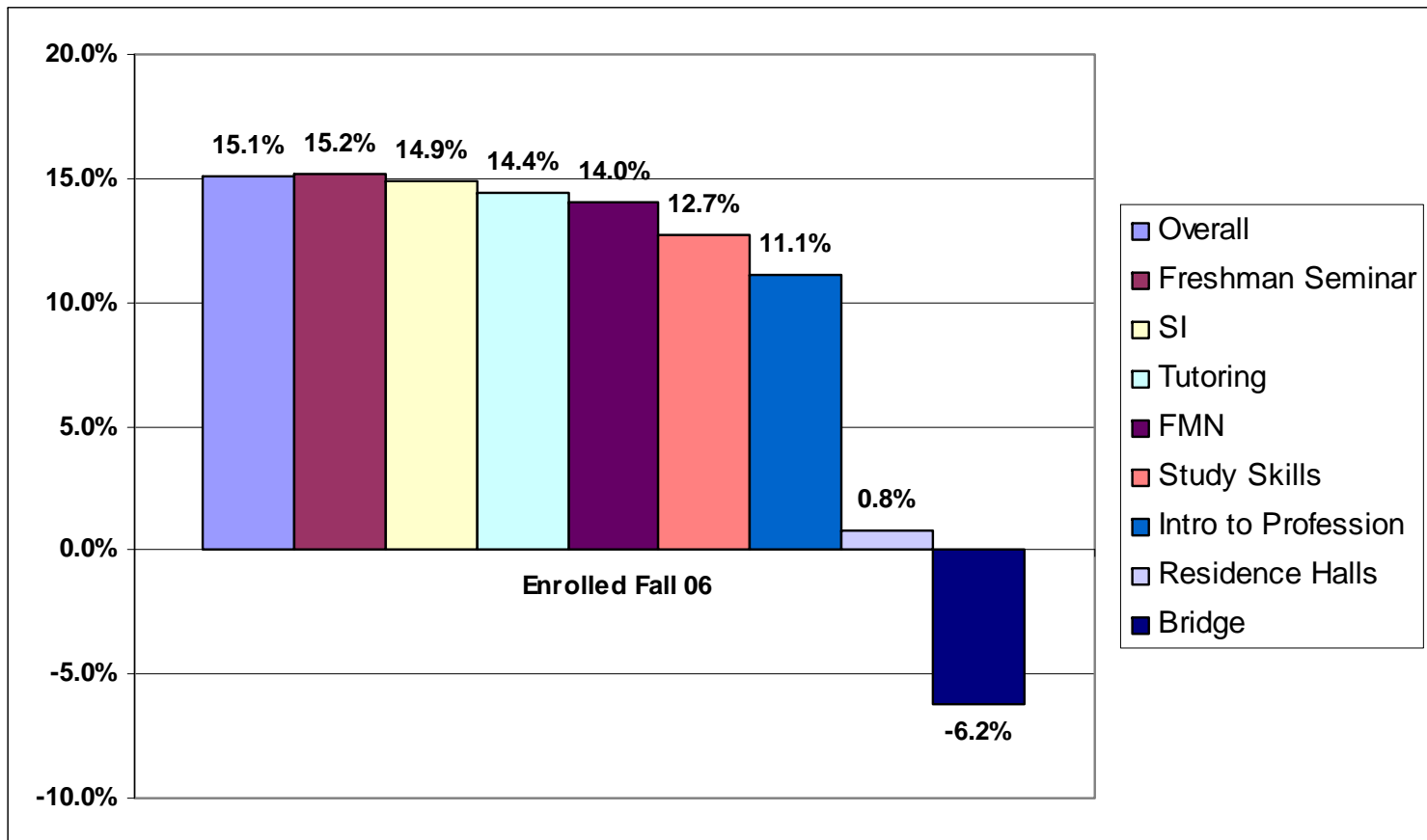
# Closing the Gap:

Satisfactory Performance/ Targeted v Non Targeted Populations





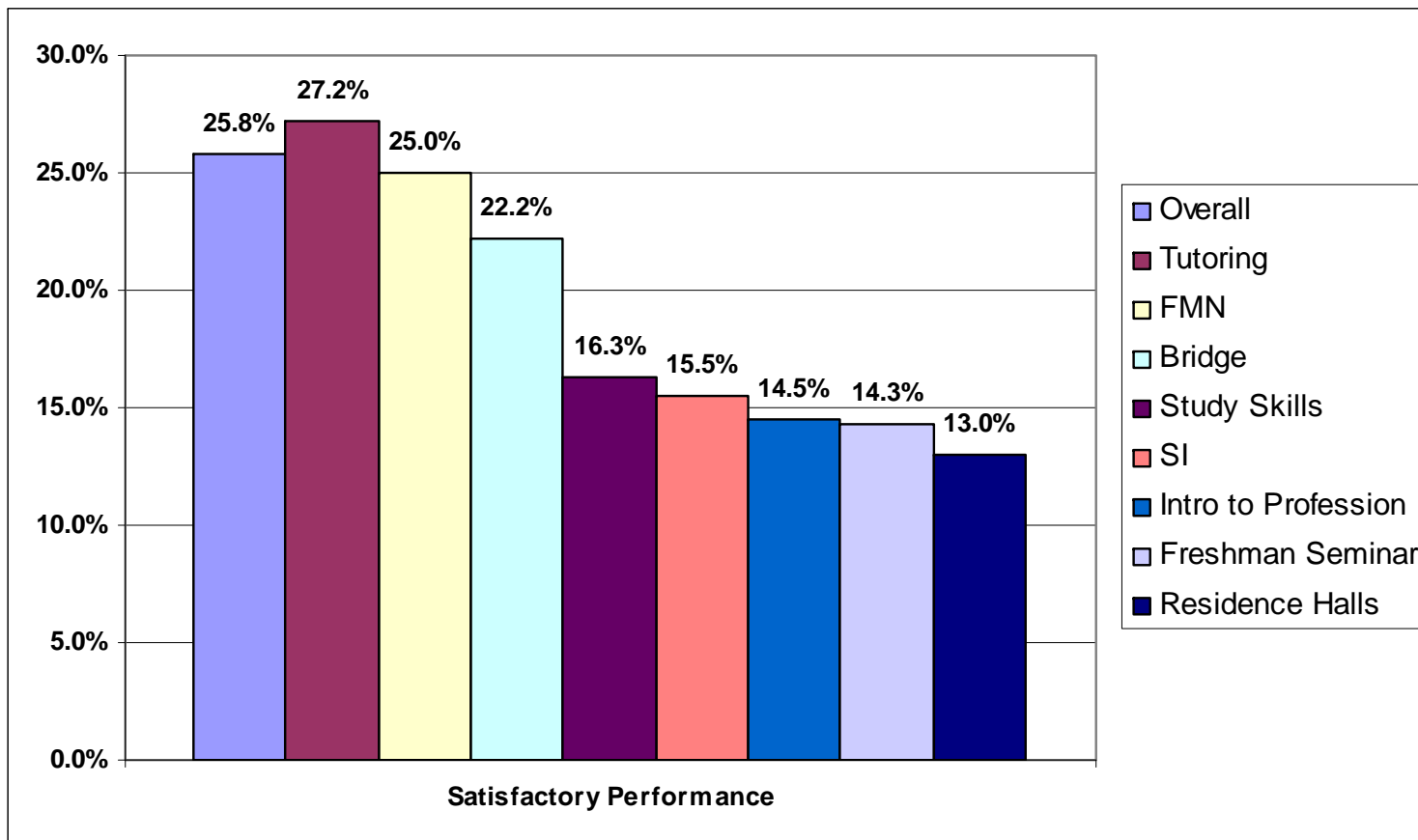
# Closing the Gap: Retention/ Targeted v Non Targeted Populations





# Closing the Gap:

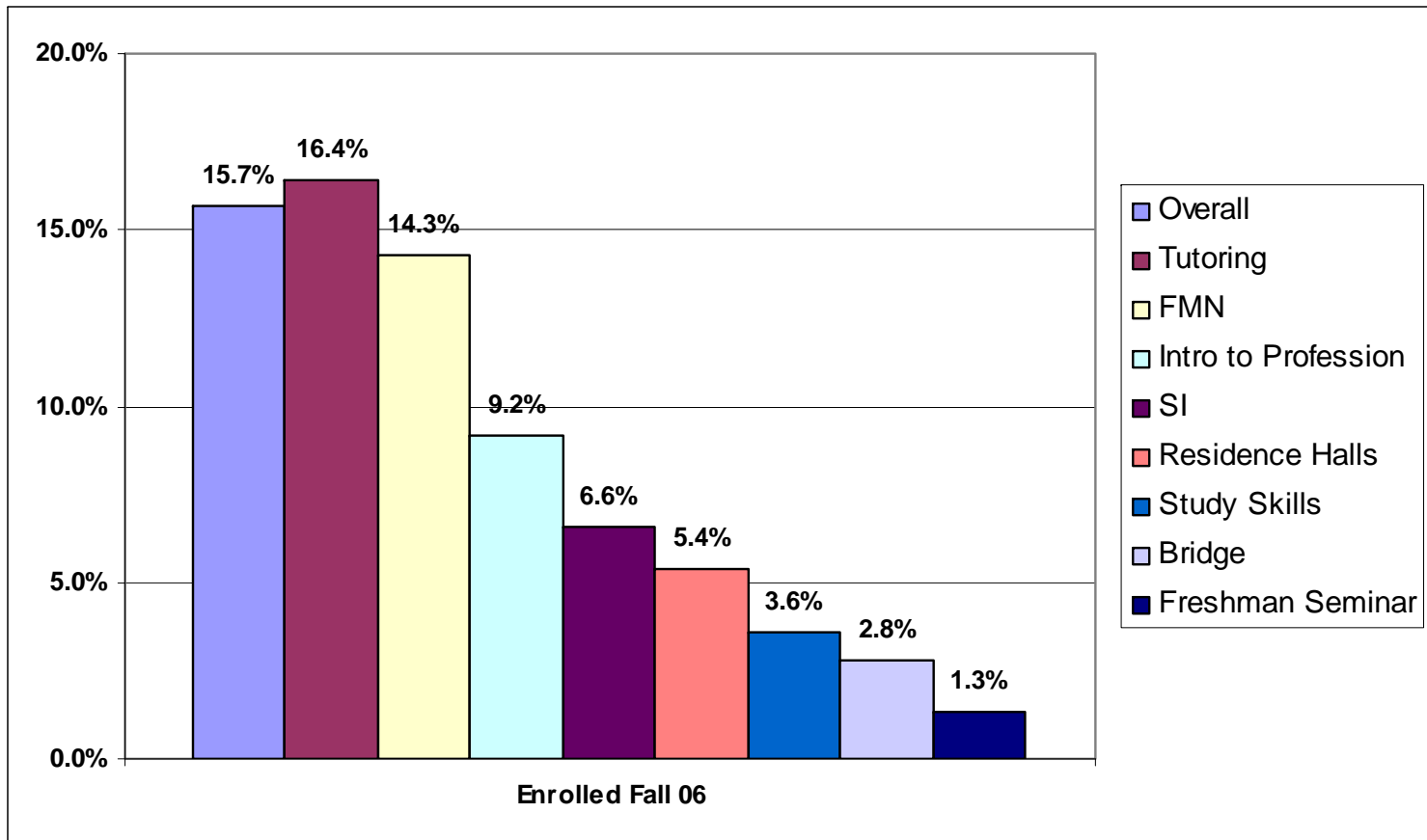
## Satisfactory Performance/College v Pre-College Placement\*



\*Placement in Math 090



# Closing the Gap: Retention/College v Pre-College Placement\*



\*Placement in Math 090



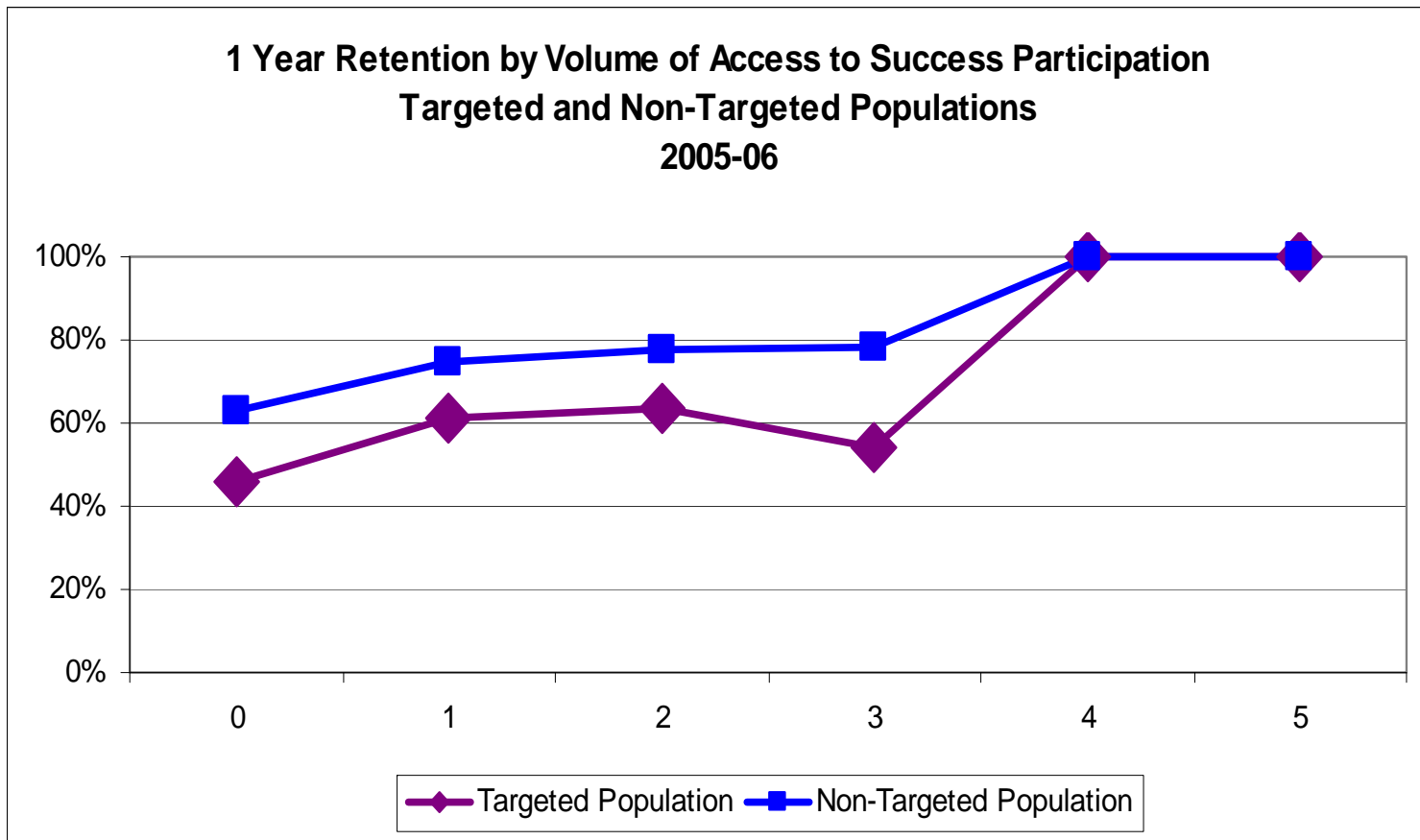
# Volume Matters

Fall 2005 Cohort: Retention by Volume of Access to Success Participation

Number of Interventions Participated	#	%	Enroll Fall 06
0	1650	38%	61%
1	1905	44%	73%
2	581	14%	75%
3	143	3%	73%
4	17	0.4%	100%
5	4	0.09%	100%
6	0	0%	.

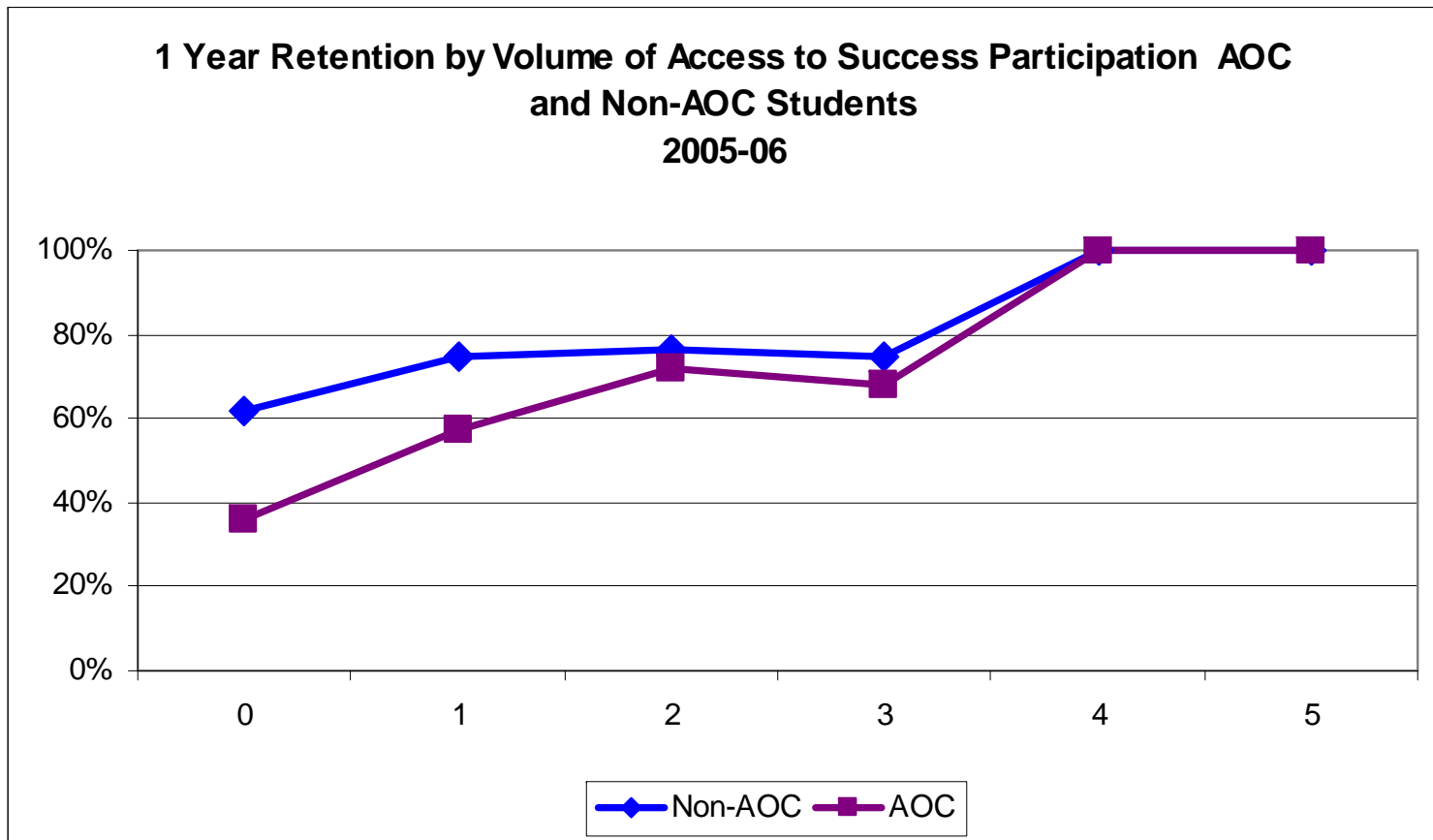


# Volume Matters: Targeted/Non Targeted Populations





# Volume Matters: AOC/Non AOC



# Retention and Performance by Ethnicity and Gender: Residence Halls



	#	Performance			Retention		
		College Placement	1 or more pre-college placement	Placed in Math090	College Placement	1 or more pre-college placement	Placed in Math090
Males	979	X	X	X	X	X	X
Females	1163	X	X	X	X	X	X
White	1995	X	X	X	X	X	X
African American	47	X	X	X	X	X	X
Latino/a	37	X			X		
SE Asian	8	X	X		X	X	
Asian	21	X		*	X		*
American Indian	10	X	X	*	X	X	*

X=5% or better improvement; \*=no participants; na=not applicable)

# Retention and Performance by Ethnicity and Gender: First Year Transition Courses



	#	Performance			Retention		
		College Placement	1 or more pre-college placement	Placed in Math090	College Placement	1 or more pre-college placement	Placed in Math090
<b>Freshman Seminar</b>							
Males	327	X	X	X	X	X	X
Females	657	X	X	X		X	X
White	812	X	X	X	X	X	X
African American	64	X	X	X	X	X	X
Latino/a	28	X	X	X		X	
SE Asian	38		X	X		X	X
Asian	14	X	X	X	X	X	X
American Indian	9	X		X	X	X	X
<b>Study Skills</b>							
Males	258						
Females	344			X		X	X
White	434		X	X		X	X
African American	85		X	X		X	X
Latino/a	37	X					
SE Asian	19	*	X	X	*	X	X
Asian	13		X			X	
American Indian	10				X		
<b>Intro to Professions</b>							
Males	667	X	X			X	
Females	480	X	X	X	X	X	X
White	975	X	X	X	X	X	X
African American	54	X					
Latino/a	37	X			X		
SE Asian	28		X	*		X	*
Asian	20	X			X		
American Indian	9	X	X		X	X	

X=5% or better improvement; \*=no participants; na=not applicable)



## Summary of Key Observations

### **Notably positive results for**

- Supplemental Instruction
- Freshmen Seminars
- Residence Halls
- Tutoring
- Intro to the Profession Courses
- Bridge Programs

### **Less positive results for**

- Study Skills courses
- AOC – but need to consider comparable students
- Freshman Mentoring Network



## Next Steps

### **Supplemental Instruction:**

*Fall, 2007*

- Increase courses and sessions
- Include in Schedule of Classes

*Fall, 2008*

- Build in to gateway courses
- Required for selected courses, not just voluntary

### **Freshman Seminars:**

*Fall, 2007*

- Increase sections
- Promote to freshmen in all schools/colleges

*Fall, 2008*

- Make the freshman seminar a common first year course supplemented by modules in study skills and introductions to professions as appropriate



## **Summer Bridge Programs:**

*Summer, 2007*

- Increase AOC sections
- Hold sessions for all Math 090 placers with voluntary attendance

*Summer, 2008*

- Require summer bridge for incoming freshmen not a college placement
- Offer voluntary bridge (with tuition and college credit) for incoming freshmen placing at college levels

## **Tutoring:**

*Fall, 2007*

- Faculty encourage participation – make it customary, not unique to get tutoring

## **Early Warning System:**

*Fall, 2007*

- Faculty send comments directly to students whether satisfactory or unsatisfactory progress
- Comments continue to be copied to advisors



## **Freshman Mentoring Network**

*Fall, 2007*

- Campus Ambassadors take on primary mentor contact role
- Volunteers from schools/colleges act as additional mentors



## **Academic Advising:**

*Spring, 2007*

- Undergraduate survey administered
- Assess impact of advising

*Fall, 2007*

- Track students' utilization of academic advising
- Assess impact



## **Learning Communities**

*Fall, 2007*

- Launching pilot learning communities

*Fall, 2008*

- Establish themed learning communities for entering freshmen





## **Undergraduate Research Program:**

*Spring, 2007*

- Plan for growth (DIN funding)

*Fall, 2007*

- Implement growth plans



## **Assessment**

*Spring, 2007*

- More finely tune A2S impact assessments
- GER learning outcomes assessments

## **Financial Access to Success**

*Spring, 2007*

- Establish working group to suggest multifaceted strategies to enable students to manage financing their entrance and continuation at UWM

- Examples might include:

Employing students: mentors, tutors, teaching teams, SI leaders, etc

Paid internships

Containing text book costs and costs for auxiliary items such as clickers

Financial education courses and opportunities





## **First Year Curriculum**

*Spring, 2007*

- Establish working group to consider a common curriculum and experience for all freshmen, regardless of major



## **University College Concept**

*Spring, 2007*

- Draft proposal for campus discussion



## **Programs for freshmen on probation**

*Spring, 2007*

- Develop options for interventions



## **School/College goals**

- Develop school/college strategies to increase by 10% the 1-year retention of new freshmen



**Thank you!**





# A2S Summary Results

<b>Access to Success</b>			
<b>Fall 2005</b>			
<b>Intervention Summary Data AOC</b>			
		2005 Cohort	
		506	
		Satisfactory Performance	Enrolled Fall 06
<b>Overall Outcome</b>		<b>52%</b>	<b>60%</b>
<b>Ethnicity</b>	<b>Targeted Minorities</b>	<b>42%</b>	<b>57%</b>
	<b>Whites, Non-targeted Asians</b>	<b>57%</b>	<b>62%</b>
<b>Math and English Placment</b>	<b>College Placement</b>	<b>57%</b>	<b>60%</b>
	<b>1 or more remedial</b>	<b>51%</b>	<b>60%</b>
	<b>Math 90 placement</b>	<b>50%</b>	<b>61%</b>



# A2S Summary Results

<b>Access to Success</b>			
<b>Fall 2005</b>			
<b>Intervention Summary Data SARUP</b>			
		2005 Cohort	
		172	
		Satisfactory Performance	Enrolled Fall 06
Overall Outcome		<b>84%</b>	<b>84%</b>
Ethnicity	Targeted Minorities	<b>44%</b>	<b>78%</b>
	Whites, Non-targeted Asians	<b>86%</b>	<b>84%</b>
Math and English Placment	College Placement	<b>85%</b>	<b>84%</b>
	1 or more remedial	<b>56%</b>	<b>78%</b>
	Math 90 placement	.	.



# A2S Summary Results

<b>Access to Success</b>			
<b>Fall 2005</b>			
<b>Intervention Summary Data</b>			
<b>Soc Welfare</b>			
		<b>2005 Cohort</b>	
		<b>142</b>	
		<b>Satisfactory Performance</b>	<b>Enrolled Fall 06</b>
<b>Overall Outcome</b>		<b>66%</b>	<b>61%</b>
<b>Ethnicity</b>	<b>Targeted Minorities</b>	<b>42%</b>	<b>42%</b>
	<b>Whites, Non-targeted Asians</b>	<b>71%</b>	<b>65%</b>
<b>Math and English Placment</b>	<b>College Placement</b>	<b>73%</b>	<b>63%</b>
	<b>1 or more remedial</b>	<b>58%</b>	<b>63%</b>
	<b>Math 90 placement</b>	<b>50%</b>	<b>50%</b>



# A2S Summary Results

<b>Access to Success</b>			
<b>Fall 2005</b>			
<b>Intervention Summary Data Arts</b>			
		2005 Cohort	
		373	
		Satisfactory Performance	Enrolled Fall 06
<b>Overall Outcome</b>		<b>71%</b>	<b>66%</b>
<b>Ethnicity</b>	<b>Targeted Minorities</b>	<b>66%</b>	<b>56%</b>
	<b>Whites, Non-targeted Asians</b>	<b>71%</b>	<b>67%</b>
<b>Math and English Placment</b>	<b>College Placement</b>	<b>71%</b>	<b>67%</b>
	<b>1 or more remedial</b>	<b>70%</b>	<b>63%</b>
	<b>Math 90 placement</b>	<b>71%</b>	<b>65%</b>



# A2S Summary Results

<b>Access to Success</b>			
<b>Fall 2005</b>			
<b>Intervention Summary Data Business</b>			
		2005 Cohort	
		607	
		Satisfactory Performance	Enrolled Fall 06
<b>Overall Outcome</b>		<b>69%</b>	<b>69%</b>
<b>Ethnicity</b>	<b>Targeted Minorities</b>	<b>42%</b>	<b>52%</b>
	<b>Whites, Non-targeted Asians</b>	<b>73%</b>	<b>72%</b>
<b>Math and English Placment</b>	<b>College Placement</b>	<b>79%</b>	<b>76%</b>
	<b>1 or more remedial</b>	<b>54%</b>	<b>58%</b>
	<b>Math 90 placement</b>	<b>28%</b>	<b>34%</b>



# A2S Summary Results

<b>Access to Success</b>			
<b>Fall 2005</b>			
<b>Intervention Summary Data CEAS</b>			
		<b>2005 Cohort</b>	
		<b>255</b>	
		<b>Satisfactory Performance</b>	<b>Enrolled Fall 06</b>
<b>Overall Outcome</b>		<b>64%</b>	<b>71%</b>
<b>Ethnicity</b>	<b>Targeted Minorities</b>	<b>56%</b>	<b>64%</b>
	<b>Whites, Non-targeted Asians</b>	<b>65%</b>	<b>72%</b>
<b>Math and English Placment</b>	<b>College Placement</b>	<b>68%</b>	<b>74%</b>
	<b>1 or more remedial</b>	<b>46%</b>	<b>58%</b>
	<b>Math 90 placement</b>	<b>33%</b>	<b>67%</b>



# A2S Summary Results

<b>Access to Success</b>			
<b>Fall 2005</b>			
<b>Intervention Summary Data Educ</b>			
		<b>2005 Cohort</b>	
		<b>252</b>	
		<b>Satisfactory Performance</b>	<b>Enrolled Fall 06</b>
<b>Overall Outcome</b>		<b>70%</b>	<b>67%</b>
<b>Ethnicity</b>	<b>Targeted Minorities</b>	<b>42%</b>	<b>37%</b>
	<b>Whites, Non-targeted Asians</b>	<b>72%</b>	<b>70%</b>
<b>Math and English Placment</b>	<b>College Placement</b>	<b>79%</b>	<b>74%</b>
	<b>1 or more remedial</b>	<b>63%</b>	<b>65%</b>
	<b>Math 90 placement</b>	<b>37%</b>	<b>33%</b>



# A2S Summary Results

<b>Access to Success</b>			
<b>Fall 2005</b>			
<b>Intervention Summary Data L&amp;S</b>			
		2005 Cohort	
		1560	
		Satisfactory Performance	Enrolled Fall 06
<b>Overall Outcome</b>		<b>72%</b>	<b>69%</b>
<b>Ethnicity</b>	<b>Targeted Minorities</b>	<b>53%</b>	<b>58%</b>
	<b>Whites, Non-targeted Asians</b>	<b>75%</b>	<b>71%</b>
<b>Math and English Placment</b>	<b>College Placement</b>	<b>76%</b>	<b>72%</b>
	<b>1 or more remedial</b>	<b>65%</b>	<b>65%</b>
	<b>Math 90 placement</b>	<b>49%</b>	<b>61%</b>



# A2S Summary Results

<b>Access to Success</b>			
<b>Fall 2005</b>			
<b>Intervention Summary Data Nurs</b>			
		<b>2005 Cohort</b>	
		<b>216</b>	
		<b>Satisfactory Performance</b>	<b>Enrolled Fall 06</b>
<b>Overall Outcome</b>		<b>68%</b>	<b>67%</b>
<b>Ethnicity</b>	<b>Targeted Minorities</b>	<b>43%</b>	<b>52%</b>
	<b>Whites, Non-targeted Asians</b>	<b>74%</b>	<b>70%</b>
<b>Math and English Placment</b>	<b>College Placement</b>	<b>72%</b>	<b>69%</b>
	<b>1 or more remedial</b>	<b>65%</b>	<b>65%</b>
	<b>Math 90 placement</b>	<b>55%</b>	<b>55%</b>



# A2S Summary Results

<b>Access to Success</b>			
<b>Fall 2005</b>			
<b>Intervention Summary Data CHS</b>			
		<b>2005 Cohort</b>	
		<b>191</b>	
		<b>Satisfactory Performance</b>	<b>Enrolled Fall 06</b>
<b>Overall Outcome</b>		<b>82%</b>	<b>82%</b>
<b>Ethnicity</b>	<b>Targeted Minorities</b>	<b>53%</b>	<b>71%</b>
	<b>Whites, Non-targeted Asians</b>	<b>84%</b>	<b>83%</b>
<b>Math and English Placment</b>	<b>College Placement</b>	<b>84%</b>	<b>81%</b>
	<b>1 or more remedial</b>	<b>79%</b>	<b>85%</b>
	<b>Math 90 placement</b>	<b>58%</b>	<b>83%</b>



# Retention by Volume of A2S Interventions by Ethnicity by School/College

AOC	Total**			African American			Latino/a			SE Asian		
	#	%	Enroll Fall 06	#	%	Enroll Fall 06	#	%	Enroll Fall 06	#	%	Enroll Fall 06
0	83	17%	36%	17	20%	41%	9	21%	78%	4	17%	50%
1	215	43%	57%	31	36%	55%	19	45%	32%	7	29%	57%
2	141	28%	72%	20	24%	70%	10	24%	60%	9	38%	67%
3	50	10%	68%	13	15%	62%	4	10%	100%	4	17%	50%
4	10	2%	100%	4	5%	100%	0	0%	.	0	0%	.
5	2	0%	100%	0	0%	.	0	0%	.	0	0%	.
6	0	0%	.	0	0%	.	0	0%	.	0	0%	.
Total	501	100%	60%	85	100%	59%	42	100%	55%	24	100%	58%

AOC	Native American			Asian			White		
	#	%	Enroll Fall 06	#	%	Enroll Fall 06	#	%	Enroll Fall 06
0	2	20%	100%	1	8%	100%	50	15%	26%
1	4	40%	25%	4	31%	50%	150	46%	61%
2	2	20%	0%	4	31%	75%	96	29%	74%
3	1	10%	100%	3	23%	67%	25	8%	72%
4	1	10%	0%	1	8%	100%	4	1%	100%
5	0	0%	.	0	0%	.	2	1%	100%
6	0	0%	.	0	0%	.	0	0%	.
Total	10	100%	40%	13	100%	69%	327	100%	61%



# Retention by Volume of A2S Interventions by Ethnicity by School/College

ARTS	Total**			African American			Latino/a			SE Asian		
	#	%	Enroll Fall 06	#	%	Enroll Fall 06	#	%	Enroll Fall 06	#	%	Enroll Fall 06
0	49	13%	45%	3	21%	.	2	22%	.	1	20%	.
1	257	69%	68%	7	50%	86%	5	56%	40%	3	60%	67%
2	49	13%	71%	4	29%	75%	2	22%	50%	1	20%	.
3	5	1%	100%	0	0%	.	0	0%	.	0	0%	.
4	1	0%	100%	0	0%	.	0	0%	.	0	0%	.
5	0	0%	.	0	0%	.	0	0%	.	0	0%	.
6	0	0%	.	0	0%	.	0	0%	.	0	0%	.
Total	361	97%	66%	14	100%	64%	9	100%	33%	5	100%	40%
ARTS				Native American			Asian			White		
	#	%	Enroll Fall 06	#	%	Enroll Fall 06	#	%	Enroll Fall 06	#	%	Enroll Fall 06
0				0	0%	.	0	0%	.	43	13%	51%
1				4	100%	100%	4	100%	50%	234	72%	68%
2				0	0%	.	0	0%	.	42	13%	74%
3				0	0%	.	0	0%	.	5	2%	100%
4				0	0%	.	0	0%	.	1	0%	100%
5				0	0%	.	0	0%	.	0	0%	.
6				0	0%	.	0	0%	.	0	0%	.
Total				4	100%	100%	4	100%	50%	325	100%	67%



# Retention by Volume of A2S Interventions by Ethnicity by School/College

BUS	Total**			African American			Latino/a			SE Asian		
	#	%	Enroll Fall 06	#	%	Enroll Fall 06	#	%	Enroll Fall 06	#	%	Enroll Fall 06
0	438	73%	67%	20	71%	55%	14	61%	43%	12	50%	50%
1	131	22%	77%	6	21%	33%	8	35%	75%	9	38%	67%
2	26	4%	69%	2	7%	50%	1	4%	100%	2	8%	50%
3	2	0%	50%	0	0%	.	0	0%	.	1	4%	0%
4	0	0%	.	0	0%	.	0	0%	.	0	0%	.
5	0	0%	.	0	0%	.	0	0%	.	0	0%	.
6	0	0%	.	0	0%	.	0	0%	.	0	0%	.
Total	597	100%	69%	28	100%	50%	23	100%	57%	24	100%	54%
BUS				Native American			Asian			White		
	#	%	Enroll Fall 06	#	%	Enroll Fall 06	#	%	Enroll Fall 06	#	%	Enroll Fall 06
0				4	100%	25%	12	92%	58%	376	74%	69%
1				0	0%	.	1	8%	100%	107	21%	80%
2				0	0%	.	0	0%	.	21	4%	71%
3				0	0%	.	0	0%	.	1	0%	100%
4				0	0%	.	0	0%	.	0	0%	.
5				0	0%	.	0	0%	.	0	0%	.
6				0	0%	.	0	0%	.	0	0%	.
Total				4	100%	25%	13	100%	62%	505	100%	72%



# Retention by Volume of A2S Interventions by Ethnicity by School/College

CEAS	Total**			African American			Latino/a			SE Asian		
	#	%	Enroll Fall 06	#	%	Enroll Fall 06	#	%	Enroll Fall 06	#	%	Enroll Fall 06
0	53	21%	70%	2	15%	100%	3	25%	100%	2	20%	0%
1	139	56%	71%	7	54%	57%	9	75%	78%	6	60%	67%
2	48	19%	77%	3	23%	33%	0	0%	.	2	20%	100%
3	7	3%	43%	1	8%	0%	0	0%	.	0	0%	.
4	1	0%	100%	0	0%	.	0	0%	.	0	0%	.
5	0	0%	.	0	0%	.	0	0%	.	0	0%	.
6	0	0%	.	0	0%	.	0	0%	.	0	0%	.
Total	248	100%	71%	13	100%	54%	12	100%	83%	10	100%	60%
CEAS				Native American			Asian			White		
	#	%	Enroll Fall 06	#	%	Enroll Fall 06	#	%	Enroll Fall 06	#	%	Enroll Fall 06
0				0	0%	.	0	0%	.	46	22%	70%
1				1	100%	0%	1	25%	100%	115	55%	72%
2				0	0%	.	3	75%	67%	40	19%	80%
3				0	0%	.	0	0%	.	6	3%	50%
4				0	0%	.	0	0%	.	1	0%	100%
5				0	0%	.	0	0%	.	0	0%	.
6				0	0%	.	0	0%	.	0	0%	.
Total				1	100%	0%	4	100%	75%	208	100%	73%



# Retention by Volume of A2S Interventions by Ethnicity by School/College

EDUC	Total**			African American			Latino/a			SE Asian		
	#	%	Enroll Fall 06	#	%	Enroll Fall 06	#	%	Enroll Fall 06	#	%	Enroll Fall 06
0	191	76%	66%	5	71%	60%	1	25%	.	5	71%	20%
1	52	21%	71%	1	14%	0%	1	25%	100%	2	29%	50%
2	7	3%	57%	1	14%	0%	2	50%	50%	0	0%	.
3	1	0%	100%	0	0%	.	0	0%	.	0	0%	.
4	0	0%	.	0	0%	.	0	0%	.	0	0%	.
5	0	0%	.	0	0%	.	0	0%	.	0	0%	.
6	0	0%	.	0	0%	.	0	0%	.	0	0%	.
Total	251	100%	67%	7	100%	43%	4	100%	50%	7	100%	29%
EDUC				Native American			Asian			White		
	#	%	Enroll Fall 06	#	%	Enroll Fall 06	#	%	Enroll Fall 06	#	%	Enroll Fall 06
0				1	100%	0%	3	75%	100%	176	77%	68%
1				0	0%	.	1	25%	100%	47	21%	72%
2				0	0%	.	0	0%	.	4	2%	75%
3				0	0%	.	0	0%	.	1	0%	100%
4				0	0%	.	0	0%	.	0	0%	.
5				0	0%	.	0	0%	.	0	0%	.
6				0	0%	.	0	0%	.	0	0%	.
Total				1	100%	0%	4	100%	100%	228	100%	69%



# Retention by Volume of A2S Interventions by Ethnicity by School/College

L&S	Total**			African American			Latino/a			SE Asian		
	#	%	Enroll Fall 06	#	%	Enroll Fall 06	#	%	Enroll Fall 06	#	%	Enroll Fall 06
0	678	44%	60%	40	43%	45%	27	47%	56%	23	47%	57%
1	630	41%	77%	39	42%	62%	24	42%	71%	17	35%	65%
2	182	12%	74%	10	11%	40%	4	7%	50%	7	14%	100%
3	39	3%	69%	4	4%	75%	2	4%	.	1	2%	0%
4	2	0%	100%	0	0%	.	0	0%	.	0	0%	.
5	1	0%	100%	0	0%	.	0	0%	.	1	2%	100%
6	0	0%	.	0	0%	.	0	0%	.	0	0%	.
Total	1532	100%	69%	93	100%	53%	57	100%	60%	49	100%	65%
L&S				Native American			Asian			White		
	#	%	Enroll Fall 06	#	%	Enroll Fall 06	#	%	Enroll Fall 06	#	%	Enroll Fall 06
0				5	38%	40%	15	54%	60%	568	44%	62%
1				7	54%	57%	10	36%	60%	533	41%	79%
2				1	8%	100%	3	11%	33%	157	12%	76%
3				0	0%	.	0	0%	.	32	2%	75%
4				0	0%	.	0	0%	.	2	0%	100%
5				0	0%	.	0	0%	.	0	0%	.
6				0	0%	.	0	0%	.	0	0%	.
Total				13	100%	54%	28	100%	57%	1292	100%	71%



# Retention by Volume of A2S Interventions by Ethnicity by School/College

NURS	Total**			African American			Latino/a			SE Asian		
	#	%	Enroll Fall 06	#	%	Enroll Fall 06	#	%	Enroll Fall 06	#	%	Enroll Fall 06
0	48	22%	33%	7	27%	14%	1	17%	0%	6	60%	33%
1	102	47%	72%	12	46%	50%	4	67%	100%	2	20%	100%
2	38	18%	87%	4	15%	50%	1	17%	100%	2	20%	100%
3	25	12%	80%	2	8%	50%	0	0%	.	0	0%	.
4	1	0%	100%	0	0%	.	0	0%	.	0	0%	.
5	1	0%	.	1	4%	100%	0	0%	.	0	0%	.
6	0	0%	.	0	0%	.	0	0%	.	0	0%	.
Total	215	100%	67%	26	100%	42%	6	100%	83%	10	100%	60%
NURS				Native American			Asian			White		
	#	%	Enroll Fall 06	#	%	Enroll Fall 06	#	%	Enroll Fall 06	#	%	Enroll Fall 06
0				0	0%	.	1	100%	0%	33	19%	39%
1				2	100%	50%	0	0%	.	82	48%	73%
2				0	0%	.	0	0%	.	31	18%	90%
3				0	0%	.	0	0%	.	23	14%	83%
4				0	0%	.	0	0%	.	1	1%	100%
5				0	0%	.	0	0%	.	0	0%	.
6				0	0%	.	0	0%	.	0	0%	.
Total				2	100%	50%	1	100%	0%	170	100%	71%



# Retention by Volume of A2S Interventions by Ethnicity by School/College

CHS	Total**			African American			Latino/a			SE Asian		
	#	%	Enroll Fall 06	#	%	Enroll Fall 06	#	%	Enroll Fall 06	#	%	Enroll Fall 06
0	33	17%	64%	0	0%	.	2	40%	.	0	0%	.
1	124	65%	85%	4	67%	75%	3	60%	100%	5	83%	80%
2	24	13%	83%	1	17%	0%	0	0%	.	1	17%	100%
3	7	4%	100%	1	17%	100%	0	0%	.	0	0%	.
4	2	1%	100%	0	0%	.	0	0%	.	0	0%	.
5	0	0%	.	0	0%	.	0	0%	.	0	0%	.
6	0	0%	.	0	0%	.	0	0%	.	0	0%	.
Total	190	100%	82%	6	100%	67%	5	100%	60%	6	100%	83%
CHS				Native American			Asian			White		
	#	%	Enroll Fall 06	#	%	Enroll Fall 06	#	%	Enroll Fall 06	#	%	Enroll Fall 06
0				0	0%	.	0	0%	.	31	18%	68%
1				0	0%	.	4	80%	100%	108	64%	85%
2				0	0%	.	1	20%	100%	21	13%	86%
3				0	0%	.	0	0%	.	6	4%	100%
4				0	0%	.	0	0%	.	2	1%	100%
5				0	0%	.	0	0%	.	0	0%	.
6				0	0%	.	0	0%	.	0	0%	.
Total				0	0%	.	5	100%	100%	168	100%	83%



# Retention by Volume of A2S Interventions by Ethnicity by School/College

SARUP	Total**			African American			Latino/a			SE Asian		
	#	%	Enroll Fall 06	#	%	Enroll Fall 06	#	%	Enroll Fall 06	#	%	Enroll Fall 06
0	13	8%	62%	0	0%	.	1	100%	100%	1	50%	100%
1	120	71%	83%	4	100%	50%	0	0%	.	1	50%	100%
2	32	19%	94%	0	0%	.	0	0%	.	0	0%	.
3	4	2%	100%	0	0%	.	0	0%	.	0	0%	.
4	0	0%	.	0	0%	.	0	0%	.	0	0%	.
5	0	0%	.	0	0%	.	0	0%	.	0	0%	.
6	0	0%	.	0	0%	.	0	0%	.	0	0%	.
Total	169	100%	83%	4	100%	50%	1	100%	100%	2	100%	100%
SARUP				Native American			Asian			White		
	#	%	Enroll Fall 06	#	%	Enroll Fall 06	#	%	Enroll Fall 06	#	%	Enroll Fall 06
0				1	50%	100%	0	0%	.	10	6%	50%
1				1	50%	100%	4	67%	75%	110	71%	84%
2				0	0%	.	2	33%	100%	30	19%	93%
3				0	0%	.	0	0%	.	4	3%	100%
4				0	0%	.	0	0%	.	0	0%	.
5				0	0%	.	0	0%	.	0	0%	.
6				0	0%	.	0	0%	.	0	0%	.
Total				2	100%	100%	6	100%	83%	154	100%	84%



# Retention by Volume of A2S Interventions by Ethnicity by School/College

Info Studies	Total**			African American			Latino/a			SE Asian		
	#	%	Enroll Fall 06	#	%	Enroll Fall 06	#	%	Enroll Fall 06	#	%	Enroll Fall 06
0	4	80%	100%	0	0%	.	0	0%	.	0	0%	.
1	1	20%	100%	0	0%	.	0	0%	.	0	0%	.
2	0	0%	.	0	0%	.	0	0%	.	0	0%	.
3	0	0%	.	0	0%	.	0	0%	.	0	0%	.
4	0	0%	.	0	0%	.	0	0%	.	0	0%	.
5	0	0%	.	0	0%	.	0	0%	.	0	0%	.
6	0	0%	.	0	0%	.	0	0%	.	0	0%	.
Total	5	100%	100%	0	0%	.	0	0%	.	0	0%	.
Info Studies				Native American			Asian			White		
	#	%	Enroll Fall 06	#	%	Enroll Fall 06	#	%	Enroll Fall 06	#	%	Enroll Fall 06
0				0	0%	.	0	0%	.	4	80%	100%
1				0	0%	.	0	0%	.	1	20%	100%
2				0	0%	.	0	0%	.	0	0%	.
3				0	0%	.	0	0%	.	0	0%	.
4				0	0%	.	0	0%	.	0	0%	.
5				0	0%	.	0	0%	.	0	0%	.
6				0	0%	.	0	0%	.	0	0%	.
Total				0	0%	.	0	0%	.	5	100%	100%



# Retention by Volume of A2S Interventions by Ethnicity by School/College

SW	Total**			African American			Latino/a			SE Asian		
	#	%	Enroll Fall 06	#	%	Enroll Fall 06	#	%	Enroll Fall 06	#	%	Enroll Fall 06
0	14	10%	21%	2	17%	50%	2	29%	0%	2	50%	0%
1	99	71%	64%	4	33%	25%	5	71%	80%	1	25%	0%
2	24	17%	71%	5	42%	60%	0	0%	.	1	25%	100%
3	2	1%	50%	1	8%	0%	0	0%	.	0	0%	.
4	0	0%	.	0	0%	.	0	0%	.	0	0%	.
5	0	0%	.	0	0%	.	0	0%	.	0	0%	.
6	0	0%	.	0	0%	.	0	0%	.	0	0%	.
Total	139	100%	60%	12	100%	42%	7	100%	57%	4	100%	25%
SW				Native American			Asian			White		
	#	%	Enroll Fall 06	#	%	Enroll Fall 06	#	%	Enroll Fall 06	#	%	Enroll Fall 06
0				0	0%	.	0	0%	.	8	7%	25%
1				1	100%	0%	0	0%	.	88	77%	66%
2				0	0%	.	0	0%	.	18	16%	72%
3				0	0%	.	0	0%	.	1	1%	100%
4				0	0%	.	0	0%	.	0	0%	.
5				0	0%	.	0	0%	.	0	0%	.
6				0	0%	.	0	0%	.	0	0%	.
Total				1	100%	0%	0	0%	.	115	100%	64%