

**NATIONAL RESEARCH COUNCIL
TRANSPORTATION RESEARCH BOARD**

AP025: PUBLIC TRANSPORTATION PLANNING AND DEVELOPMENT

AGENDA – ANNUAL COMMITTEE MEETING

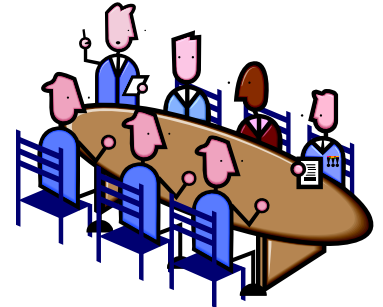
Tuesday, January 25, 2011, 8:00 A.M. – noon.

**Washington Hilton, (as of now in the Fairchild Room-Terrace Level, but please check)
(Note items may not occur in this order depending on availability of people)**

1. Introductions and Review of Agenda (5 minutes)
2. Minutes of 2010 Annual Meeting: (5 minutes)

See separate attachment, these will be posted at:
<http://www4.uwm.edu/cuts/trb/trb10.pdf>

3. Review of last year's activities (10 minutes)
 - Paper Reviews -The committee received 47 papers, 12 were transferred to other committees, of the remaining 35, 9 were accepted for presentation sessions and 12 at poster sessions. The committee received 131 of 156 reviews; all papers had 3 or more reviews. In addition the committee co-sponsored three other sessions
 - Research Sub committee (Conklin) Two projects were submitted to TCRP, and were funded. These were:
 - Project G-13 A Transit Manager's Guide to Using ITS Data to Work Smarter and Cheaper: Developing Content for the APTA Tech Portal
 - Project H-45 Rail Transit Corridor Analysis: Planning and Retrofitting for Livable Communities
4. Information Items from TRB, TCRP, TRB Transit Group (20 minutes)
5. Reports on Work in Progress/Recently Completed (30 minutes)
 - Report of FTA activities (Goodman)
 - FTA Transit at the Table project
 - Other FTA or APTA activities
 - Reports from other Committees
6. Other Committee Activities (30 minutes)
 - Membership Rotation
 - Canadian & European Report (Hemily, Francis Cheung)
 - World Transit Research on-Line paper access (Graham Currie)
 - TRB Communications coordinator
 - Summer Meeting?
 - Calls for Papers?
 - Other Activities?
7. Other Reports / Events of Interest (10 minutes)
 - Reports from members on current problems and issues
8. Workshop to write research statements



Transit Planning and Development Committee Activities January 2011 TRB meeting

Committee Meeting:

Public Transportation Planning and Development Committee Meeting

Hilton: Jan 25 2010, 8:00 AM- noon

Edward A. Beimborn, University of Wisconsin, Milwaukee, presiding

Sponsored by Committee on Public Transportation Planning and Development

Committee sponsored Podium sessions:

Session 657 Public Transportation Planning, Part 1: Modeling, Analysis of Behavior, and Methodological Enhancements (Part 2, Session 703)

Jan 26, 2011, 8:00-10:00am

Edward A. Beimborn, University of Wisconsin, Milwaukee, presiding

Sponsored by Committee on Public Transportation Planning and Development

Model for Assessing Public Transport Demand Stability (11-1973)

Pablo Hernan Bass, Universidad de Chile

Marcela Munizaga, Universidad de Chile

Pedro Pablo Donoso, Universidad de Chile

Demographic Analysis of Public Transit Route Choice (11-1806)

Mohsen Nazem, Ecole Polytechnique de Montreal, Canada

Martin Trepanier, Ecole Polytechnique de Montreal, Canada

Catherine Morency, École Polytechnique de Montréal, Canada

Income Effects and Other New Findings on the Complexity of Transit Tours (11-2193)

Vincent L. Bernardin, Bernardin, Lochmueller & Associates, Inc.

Andrew Swenson, Indianapolis Metropolitan Planning Organization

Zhuojun Jiang, Mid-Ohio Regional Planning Commission

Michael Grovak, Bernardin, Lochmueller & Associates, Inc.

Evaluating Role of Real-Time Transit Information Provision on Dynamic Passenger Path Choice (11-2599)

Oded Cats, Royal Institute of Technology, Sweden

Haris N. Koutsopoulos, Royal Institute of Technology, Sweden

Wilco Burghout, Royal Institute of Technology, Sweden

Tomer Toledo, Technion - Israel Institute of Technolo

Session 703 Public Transportation Planning, Part 2: Effectiveness of Services and Planning Strategies (Part 1, Session 657)

Jan 26, 10:15am – 12:00pm

Brendon Hemily, Consultant, presiding

Sponsored by Committee on Public Transportation Planning and Development

Differences in Travel Behavior and Demand Potential of Rail- and Bus-Based Neighborhoods: Evidence from Cluster Analysis (11-1192)

[Milena Scherer](#), Swiss Federal Institute of Technology, Zurich

[Ulrich Alois Weidmann](#), Swiss Federal Institute of Technology, Zurich

Exploring Ridership Drivers of Light Rail and Bus Rapid Transit: Empirical Route-Level Analysis (11-0209)

[Graham Currie](#), Monash University, Australia

[Alexa Delbosc](#), Monash University, Australia

Analysis of Cost-Effectiveness of Employment Transportation Services (11-3945)

[Piyushimita \(Vonu\) Thakuria](#), University of Illinois, Chicago

Vision Versus Pragmatism: St. Louis Long-Range Transit Plan (11-3583)

[Jessica Mefford-Miller](#), Metro St. Louis

[Kenneth S. Kinney](#), URS Corporation

Cost-Effective Approaches to Reduce Greenhouse Gas Emissions Through Public Transportation in Los Angeles (11-3336)

[Frank Gallivan](#), ICF International

[Jeffrey Ang-Olson](#), ICF International

[Emmanuel Liban](#), Los Angeles County Metropolitan Transportation Authority

[Alvin Kusumoto](#), Los Angeles County Metropolitan Transportation Authority

Committee sponsored Poster Sessions

Session 349

Transit Planning Techniques and Issues

Edward A. Beimborn, University of Wisconsin, Milwaukee, presiding

Sponsored by Committee on Public Transportation Planning and Development (AP025)

Transit Coordination in the United States: Survey of Current Practice (11-3987) - B01

[Charles Richard Rivasplata](#), San Jose State University

[Hiroyuki Iseki](#), University of New Orleans

[Adam Lee Smith](#), San Jose State University

Psychological Factors Influencing Behavioral Intention Toward Future Sky Train Usage in Phnom Penh, Cambodia (11-4111) - B02

[Borith Long](#), Chulalongkorn University, Thailand

[Kasem Choocharukul](#), Chulalongkorn University, Thailand

[Takashi Nakatsuji](#), Hokkaido University, Japan

User Preference Analysis of Light Rail Transit and Bus Public Transport Systems (11-3187) - B03

[Luigi dell'Olio](#), University of Cantabria, Spain

[Ibeas Angel](#), University of Cantabria, Spain

American Recovery and Reinvestment Act Stimulus Spending: Impact on Transit (11-3461) - B04

[Lisa Jacobson](#), Nelson\Nygaard Consulting Associates

Identifying Vulnerable Populations While Meeting Public Transportation Needs (11-3083) - B05

[Sara Karrie Land](#), Texas Southern University

[Sheri Smith](#), Texas Southern University

Method for Predicting Mean and Variance of Transit Segment and Route Travel Times (11-2131) - B06

Soroush Salek, University of Waterloo, Canada
Reza Noroozi, University of Waterloo, Canada
Jeffrey Casello, University of Waterloo, Canada
Bruce Hellinga, University of Waterloo, Canada

What Really Matters for Increasing Transit Ridership: Statistical Analysis of How Transit Level-of-Service and Land Use Variables Affect Transit Patronage in Broward County, Florida (11-0358) - B07

Gregory Lee Thompson, Florida State University
Jeffrey R. Brown, Florida State University
Torsha Bhattacharya, Florida State University

Technique to Estimate Disaggregate Park-and-Ride Travel Times (11-0693) - B08

Zachary Rupert Patterson, Concordia University, Canada
Ka Kee Alfred Chu, Ecole Polytechnique de Montreal, Canada
Maxime Formond, Agence Métropolitaine de Transport, Canada
Daniel Bergeron, Agence Métropolitaine de Transport, Canada

Exploring the Rail Factor with Schemata of Bus and Rail: Two Studies from Germany and Switzerland (11-1194) - B09

Milena Scherer, Swiss Federal Institute of Technology, Zurich
Katrin Dziekan, Technical University of Berlin, Germany
Christine Ahrend, Berlin Institute of Technology

Impact of Gasoline Prices on Transit Ridership in Washington State (11-2323) - B10

Victor W. Stover, Nelson\Nygaard Consulting Associates
Chang-Hee Christine Bae, University of Washington

Small Agglomerations, High Transit Use: Transportation System Deployment and Land Use in Switzerland (11-0322) - B11

Hermann W. M. Orth, Swiss Federal Institute of Technology, Zurich
Milena Scherer, Swiss Federal Institute of Technology, Zurich
Ulrich Alois Weidmann, Swiss Federal Institute of Technology, Zurich

Achieving Sustainability Goals Through University-Transit Partnerships (11-4213) - C02

Stuart Matthew Sandidge, Texas A&M University

Committee cosponsored sessions

Mega-Regions Joint Subcommittee of
ADA20

Event Date: Jan 26 2011 2:30PM- 6:00PM

Event Location: Hilton

Presiding Officers: Black, Thera - Thurston Regional Planning Council
Sciara, Gian-Claudia - University of California, Davis

Sponsored By: [Strategic Management \(ABC10\)](#)
[Statewide Multimodal Transportation Planning \(ADA10\)](#)
[Metropolitan Policy, Planning, and Processes \(ADA20\)](#)
[Transportation Planning Applications \(ADB50\)](#)
[Regional Transportation Systems Management and Operations \(AHB10\)](#)
[Public Transportation Planning and Development](#)

[\(AP025\)](#)
[Intercity Passenger Rail \(AR010\)](#)
[Freight Transportation Planning and Logistics \(AT015\)](#)
[Urban Freight Transportation \(AT025\)](#)
[Intermodal Freight Transport \(AT045\)](#)
[Ports and Channels \(AW010\)](#)
[Inland Water Transportation \(AW020\)](#)
[Congestion Pricing \(ABE25\)](#)

Event Description: At its mid-year committee meeting ADA20 established a joint subcommittee on mega-regions. This interdisciplinary subcommittee of diverse TRB committees will focus on the planning, operations, financing, and management needs of passenger and freight systems that serve mega-regions. At this inaugural meeting of the joint subcommittee, representatives will outline their interests, develop implementation strategies, and establish the logistics structure needed to support subcommittee activities.

Event Number: 177

Event Title: Livability: Connecting to Parks and Public Lands

Event Date: Jan 23 2011 1:30PM- 4:30PM

Event Location: Hilton

Presiding Officers: Zimmerman, Carol A. - Battelle Memorial Institute
Kack, David - Western Transportation Institute

Sponsored By: [Transportation Planning for Small and Medium-Sized Communities \(ADA30\)](#)
[Transportation Needs of National Parks and Public Lands \(ADA40\)](#)
[Transportation and Land Development \(ADD30\)](#)
[Public Transportation Planning and Development \(AP025\)](#)
[Rural Public and Intercity Bus Transportation \(AP055\)](#)

Event Description: This workshop focuses on the ability to define the six livability principles established by U.S.DOT, EPA, and HUD in regard to access to recreational opportunities and public lands, including federal lands such as national parks, national forests, and wildlife refuges, and how to tie livability into the recently launched America's Great Outdoors initiative. The workshop will spotlight the transportation and research implications for these initiatives in both urban and rural environments.

Event Number: 654

Event Title: Livability: Implementation Lessons from a Multimodal Transportation Planning Perspective

Event Date: Jan 26 2011 8:00AM- 9:45AM

Event Location: Hilton

Presiding Officers: Stepp, Elizabeth Sanford - Cambridge Systematics, Inc.

Sponsored By: [Statewide Multimodal Transportation Planning \(ADA10\)](#)

[Metropolitan Policy, Planning, and Processes \(ADA20\)](#)
[Social and Economic Factors of Transportation \(ADD20\)](#)
[Public Transportation Planning and Development \(AP025\)](#)

Event Description: With presentations and a panel discussion, this session explores how the U.S. DOT-HUD-EPA livability initiative is being implemented by transportation agencies, taking into account their mission, role, and legal authorities. Panelists will describe efforts to implement integrated projects and programs that support broad objectives to improve livability, and how the evolving concept of livability has changed the approach to planning and delivery and how they measure success will be discussed.