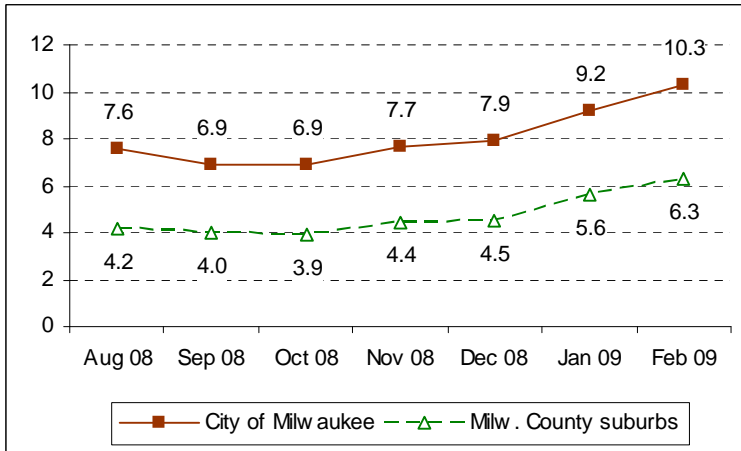




# Milwaukee Drilldown, April 2009

for the Milwaukee Area Workforce Investment Board, Inc.

## City of Milwaukee unemployment reaches 10.3% in Feb. 2009



## SAFETY NETS FOR MILWAUKEE COUNTY FAMILIES

“W-2” payment cases in February 2009 totaled 4,845, including 4,259 cases with CSJ and transition jobs. The number of families receiving W-2 income support is up by 52 over January 2009.

14,571 families received **Shares child care subsidies** in February 2009, down from 14,727 in January. A total of 29,290 children are in care.

The number of Milwaukee County residents receiving **FoodShares** reached 169,251 in February 2009, and 159,191 residents were enrolled in **BadgerCare Plus**. Enrollments are rising in both programs.

## Weekly unemployment insurance claims for Milwaukee County workers continue to climb



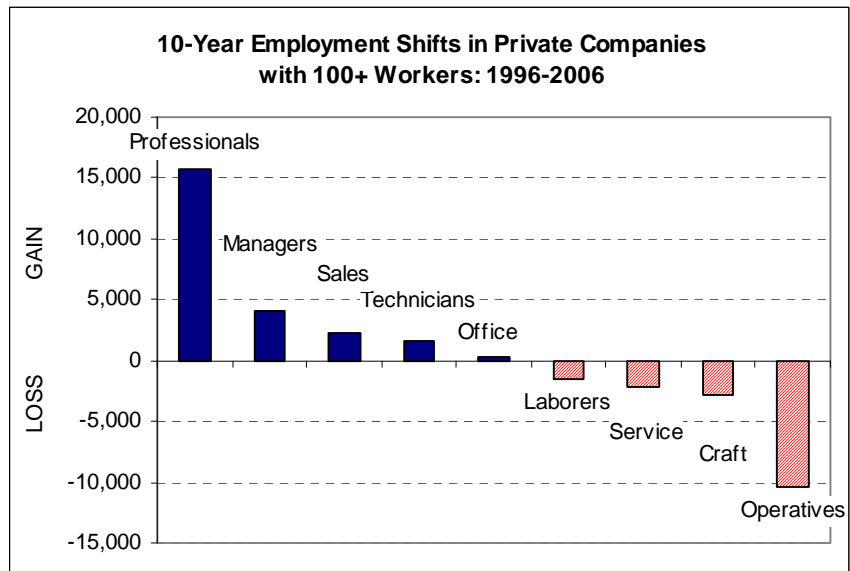
- 41,443 Milwaukee County workers received unemployment insurance payments for the week ending March 28, 2009 (up from 16,619 in January 2007 and 39,098 last month). Another 3,553 workers filed initial claims for UI.
- Statewide, UI benefits were paid to 191,996 laid-off workers as of March 28, up by over 77,000 from January 2007. In sharp contrast, “W-2” income support was given to 6,949 low-income Wisconsin families in February 2009, up by only 617 families from the levels in January 2007. (Milwaukee County has 22% of Wisconsin’s UI claimants and 70% of the W-2 payment cases.)

**Firm closings and layoffs:** In March 2009, 6 firms in Milwaukee County (Central States Mortgage, Universal Brixius/MIC Group-Milwaukee, La Causa, Tramont Corporation, Liberty Mutual, and U.S. Bank) reported anticipated closings and layoffs to the state for a loss of 419 jobs.

## Employment shifts in private industry

In the 4-county Milwaukee area, private sector jobs for professionals in larger companies increased by 15,739 in the last decade, while employment of semi-skilled operatives declined by 10,467, according to annual EEO-1 reports filed by companies with 100+ workers. “White collar” work, particularly for persons with college education and experience, is increasing while manual labor jobs are in decline. Employment totaled 339,370 in these companies in 2006.

White workers make up 78% of the private sector workforce (in companies with 100+ workers), down from 82% 10 years ago. Hispanics showed the largest net gain in private sector jobs (an increase of 8,897), followed by Asian Americans (a 3,474 increase), and then African Americans (a 2,910 increase).



Source: EEO-1 reports filed by companies in the 4-county Milwaukee area, 1996-2006

**Drilldown Data Sources:** Wisconsin departments of Children and Families, Health Services, and Workforce Development; U.S. Equal Employment Opportunities Commission. (4/03/09)

Prepared by the Employment & Training Institute, University of Wisconsin-Milwaukee and the Milwaukee Area Workforce Investment Board

Milwaukee Drill photo courtesy of Milwaukee Electric Tool Corporation