



# Milwaukee Drilldown, June 2009

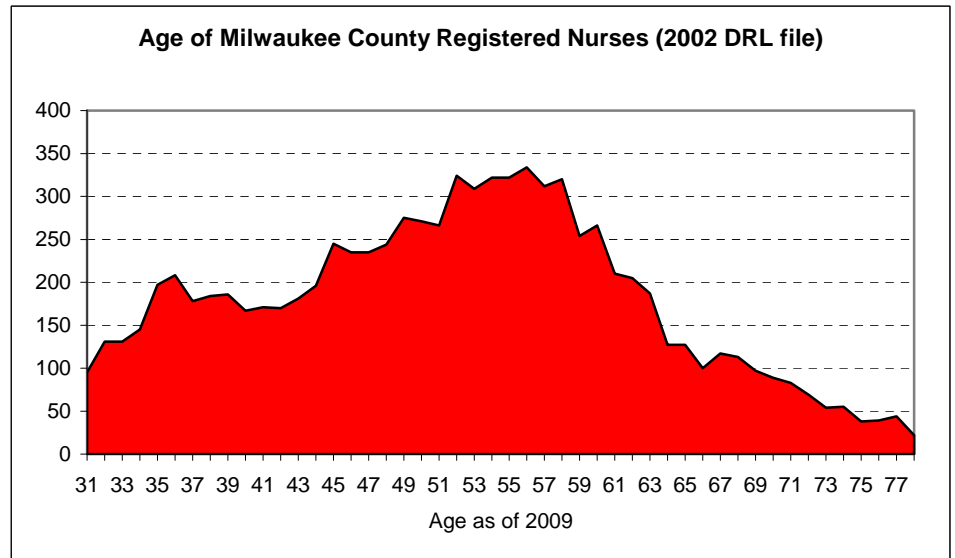
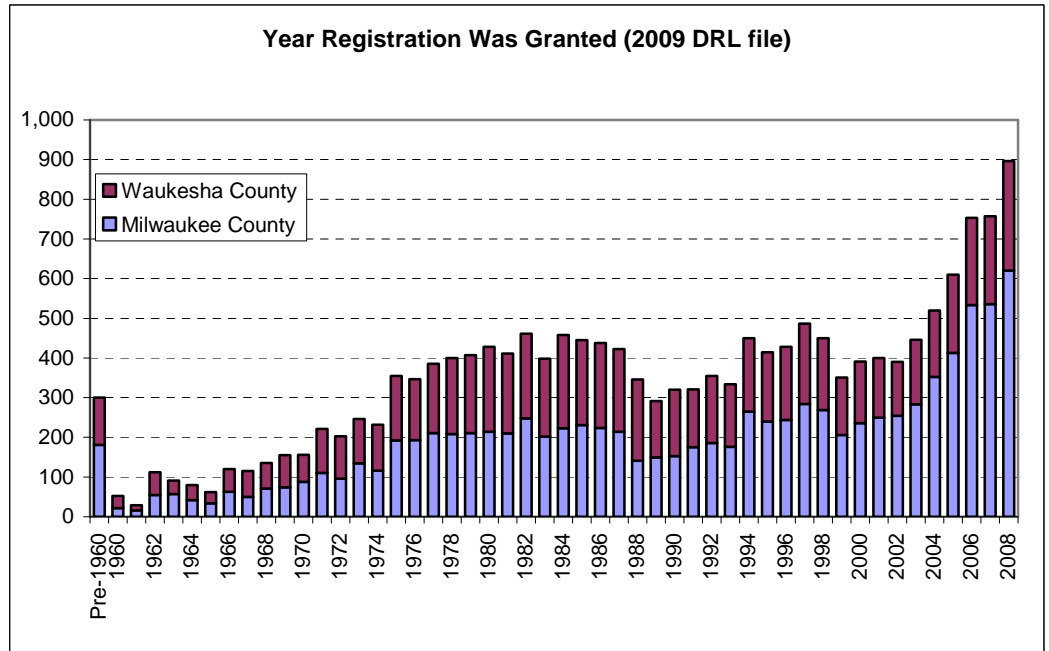
for the Milwaukee Area Workforce Investment Board, Inc.

## Nursing Drilldown: RN licenses up in last 3 years

Wisconsin Department of Regulation & Licensing records show an increasing number of nurses being registered in Milwaukee and Waukesha counties. The Milwaukee County annual registrants more than doubled to 620 RNs registered in 2008. These include newly trained nurses, LPNs upgrading to RN licensing, and in-migrants seeking a Wisconsin license.

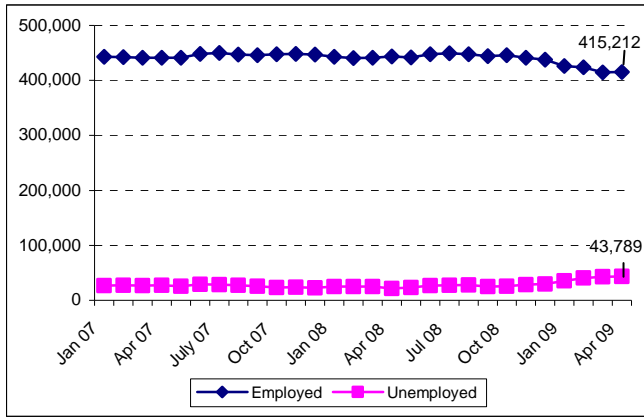
Increases in registered nurses make up in part for the large number of RNs of baby-boomer age approaching retirement and declining numbers of employed RNs living in the county. (See graph for the 2002 DRL file, when age data was made available.)

- Nurses employed at jobsites within Milwaukee County totaled 11,520 in 1990, 11,265 in 2000 and surged to 12,310 in 2005-2007, according to census estimates.
- Meanwhile the number of employed RNs **living** in Milwaukee County (regardless of their place of employment) declined from 8,816 in 1990 to 7,835 in 2000, and up to 8,891 in 2005-2007. 15,475 in 1990 to 7,835 in 2000, and 8,891 in 2005-2007.
- The ETI job openings surveys showed 1,316 openings for RNs (766 full-time and 550 part-time) in May 2006. Similarly high demand was seen in earlier surveys (2002-2005). The 2009 job opening survey is currently in progress.

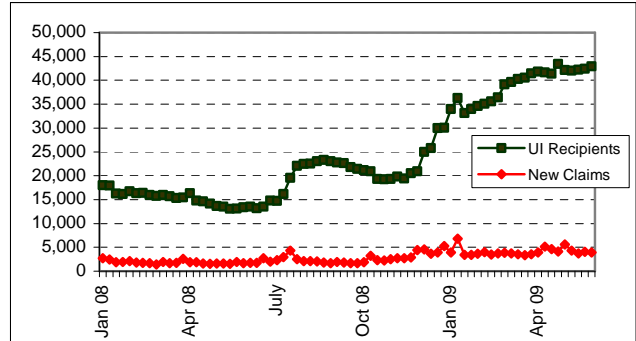


Source: Analysis of Wisconsin Department of Regulation & Licensing records and other data sources for the upcoming UWM Employment and Training Institute labor force drilldowns for the Milwaukee Area Workforce Investment Board.

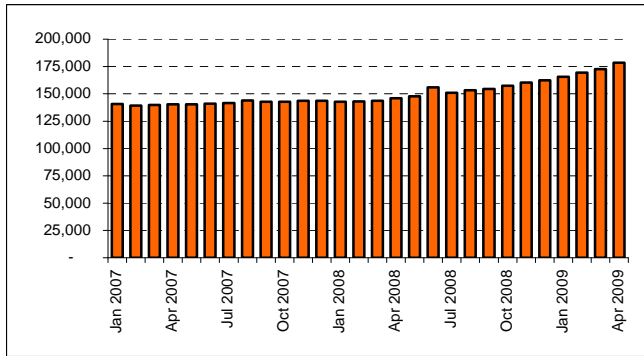
**TAKING STOCK: The Milwaukee County labor force included 415,212 employed and 43,789 unemployed workers in April 2009**



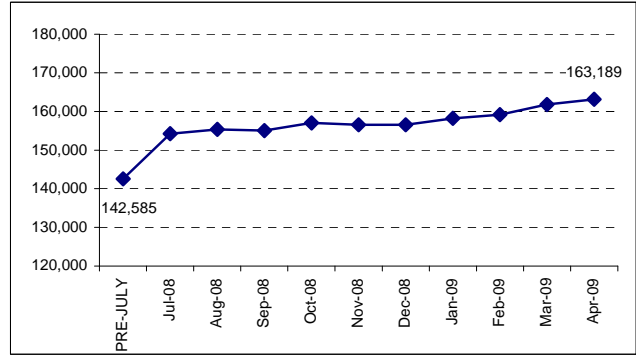
**42,928 workers in county receive weekly unemployment insurance, 3,953 more apply**



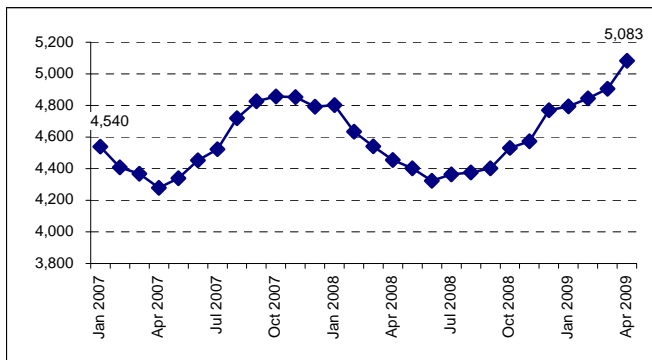
**178,259 children and adults use FoodShares**



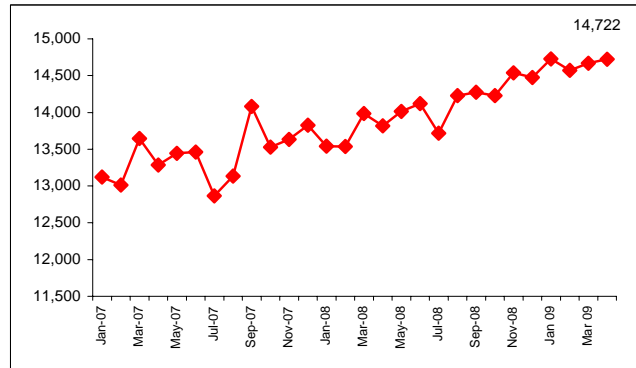
**163,189 county residents on BadgerCare Plus**



**Only 5,083 families receive W-2 cash support**



**14,722 Milwaukee County families receive Shares child care subsidies for 29,418 children**



**Drilldown Data Sources:**  
Wisconsin departments of Children and Families, Health Services, and Workforce Development. (6/09/09)

**April 2009 unemployment rates:** City of Milwaukee – 11.3%; Milwaukee County suburbs – 6.9%

**Firm closings and layoffs:** In May 2009, 4 firms in Milwaukee County (GB Mortgage, Grede Foundries, Tramont Corporation, and Wisconsin Physicians Service Insurance Corporation) reported to the state anticipated closings and layoffs affecting 209 workers.

Prepared by the Employment & Training Institute, University of Wisconsin-Milwaukee and the Milwaukee Area Workforce Investment Board

Milwaukee Drill photo courtesy of Milwaukee Electric Tool Corporation