



# Milwaukee Drilldown, March 2009

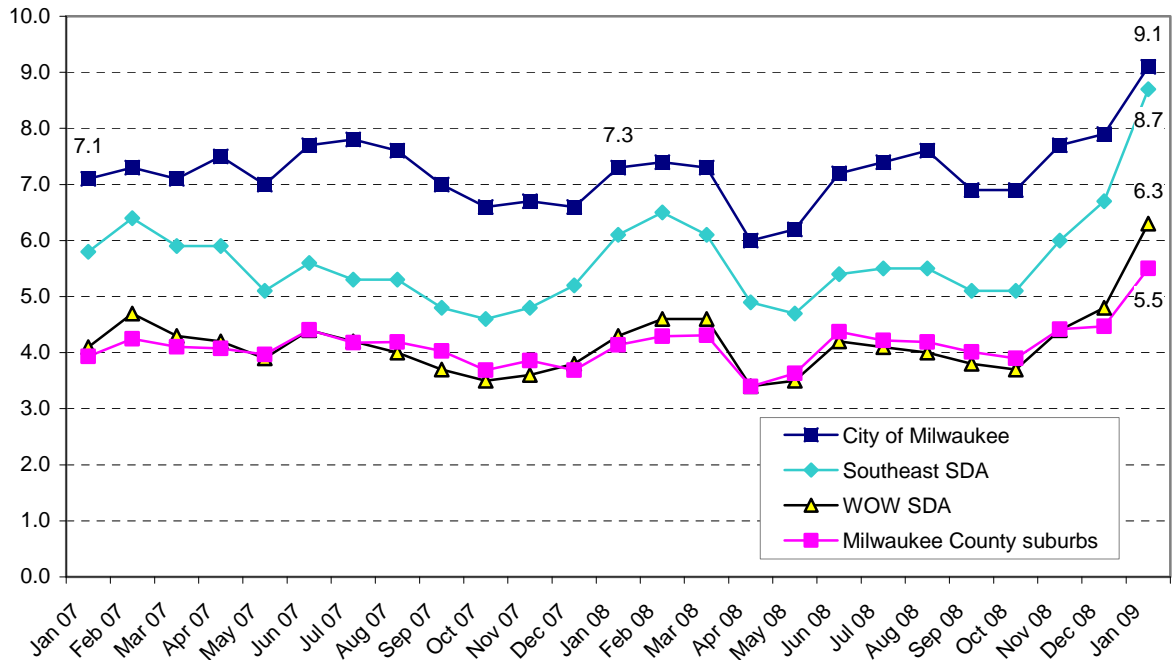
for the Milwaukee Area Workforce Investment Board, Inc.

In December 2008 the U.S. employment rate passed 7% for the first time in more than a decade. The City of Milwaukee has had rates exceeding that level since 2002.

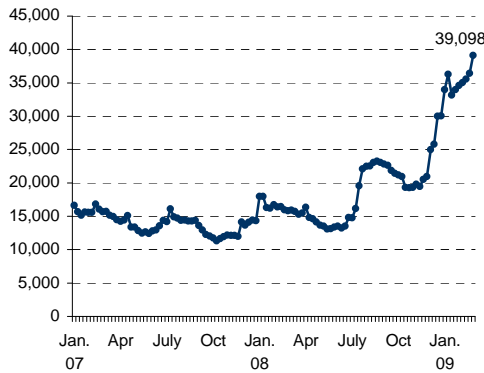
Unemployment in the City of Milwaukee reached 9.1% in January 2009, the highest it has been since 2003. The City had an est. 249,504 employed and 24,832 unemployed workers.

The Milwaukee County suburbs had an unemployment rate of 5.5% (177,667 employed and 10,429 unemployed workers).

Monthly Unemployment Rates in the Milwaukee Region



## Weekly unemployment insurance claims for Milwaukee County workers:



39,098 Milwaukee County workers received unemployment insurance payments for the week ending February 28, 2009, and another 3,875 workers filed initial claims for UI. The number of weekly UI recipients has doubled over the last two years.

- Women made up 40% of new claimants (in the first 2 months of 2009). 48% of these female workers were African American, 47% white, and 3% Hispanic.
- For men, 61% of new claimants were white, 34% were African American, and 3% Hispanic

**Firm closings and layoffs:** In January and February 2009, 9 companies (Viasystems Milwaukee, Yellow Transportation – Milwaukee, Unilever, S. Abraham & Sons, Roadway Express-Milwaukee, Stroh Die-Casting, Circuit City Stores, Dickens [Schwartz] Books, and Evergreen International Aviation) reported anticipated closings and layoffs to the state for a loss of 728 jobs. In 2008, 24 companies reported planned closings and layoffs for 2,419 workers.

## SAFETY NETS FOR FAMILIES IN MILWAUKEE COUNTY:

A total of 62,025 employed families in Milwaukee County received **state and federal earned income tax credits** in 2008 (based on tax filings for 2007). 2/3 of single filers with dependents claimed the EIC. *These families will gain under the Obama stimulus package.*

“W-2” payment cases in January 2009 totaled 4,793, including 4,224 cases with CSJ and transition jobs. The number of families receiving W-2 income support has declined in spite of the recession.

14,727 families received **Shares child care subsidies** in January 2009, for care of 29,771 children.

The number of Milwaukee County residents receiving **FoodShares** reached 165,668 in January 2009, and 158,360 residents were enrolled in **BadgerCare Plus**.

Data sources: Wisconsin departments of Children and Families, Health Services, Revenue, and Workforce Development.

Prepared by the Employment & Training Institute, University of Wisconsin-Milwaukee and the Milwaukee Area Workforce Investment Board

Milwaukee Drill photo courtesy of Milwaukee Electric Tool Corporation