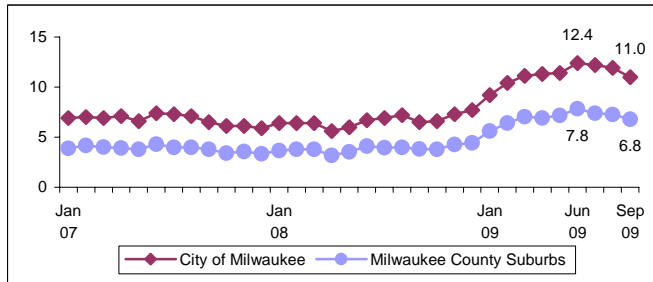




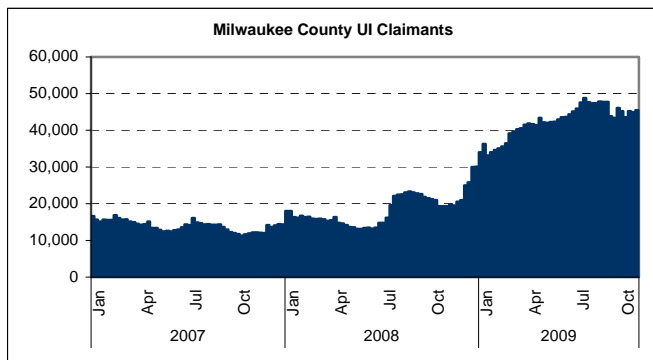
Milwaukee Drilldown, November 2009

for the Milwaukee Area Workforce Investment Board, Inc.

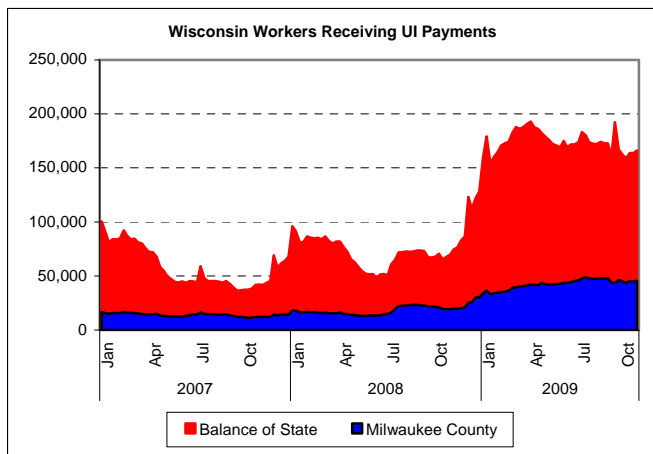
Unemployment rates dropped in the City of Milwaukee and Milwaukee County suburbs, based on lower estimates of active job seekers rather than increases in employed workers.



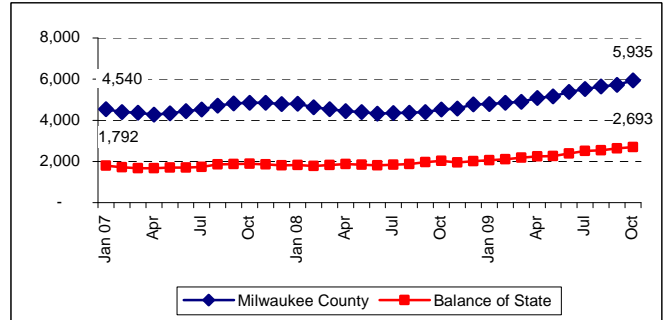
45,464 workers from Milwaukee County received weekly unemployment insurance in October 2009, up by 26,194 over October 2008.



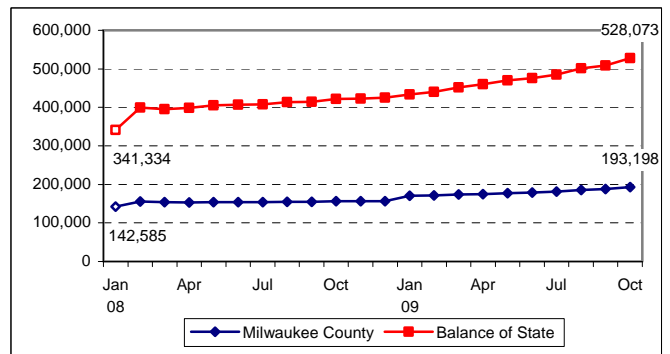
In the Balance of State, 166,195 workers received UI in October 2009, up by 98,392 over a year ago.



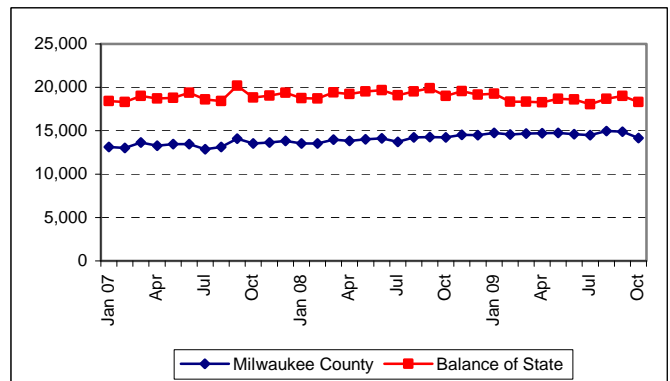
MILWAUKEE COUNTY/BALANCE OF STATE COMPARISONS: W-2 cash support was paid to 5,935 families in Milwaukee County and 2,693 families in the Balance of State.



As of October, 75,130 adults and 118,068 children in Milwaukee County were on BadgerCare Plus.



14,162 Milwaukee County families and 18,312 families in the Balance of State received Wisconsin Shares child care subsidies in October 2009.



No new firm closings or layoffs announced in October 2009.

Drilldown Data Sources: Wisconsin departments of Children and Families, Health Services, and Workforce Development. (11/19/09)

Prepared by the Employment & Training Institute, University of Wisconsin-Milwaukee and the Milwaukee Area Workforce Investment Board

Milwaukee Drill photo courtesy of Milwaukee Electric Tool Corporation