

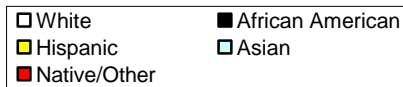
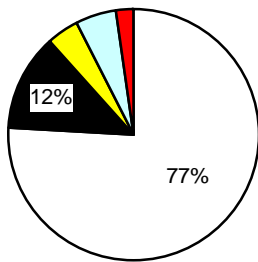


Health Occupation Drilldowns for Milwaukee County

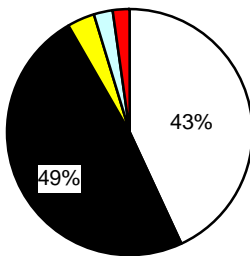
In cooperation with the Milwaukee Area Workforce Investment Board, the University of Wisconsin-Milwaukee Employment and Training Institute examined state Department of Regulation & Licensing records to determine the credential status of health care workers from Milwaukee County as of Spring 2009. The health industry is a dominant force in the current labor market with 1 out of 4 full-time job openings and 1 out of 3 part-time openings in a health-related field, according to the Institute's May 2009 regional job openings survey.

Of 11,963 county residents obtaining registered nurses credentials from 1970 through 2008, 9,290 (78%) had current licenses. The annual number obtaining RN degrees has more than doubled in the last few years and was over 500 in 2006, 2007 and 2008. Prior to 2000 most (92%) of the RNs from Milwaukee County were whites. Since 2000, about a fourth of RNs have been minorities.

RNs Licensed in 2002-2008

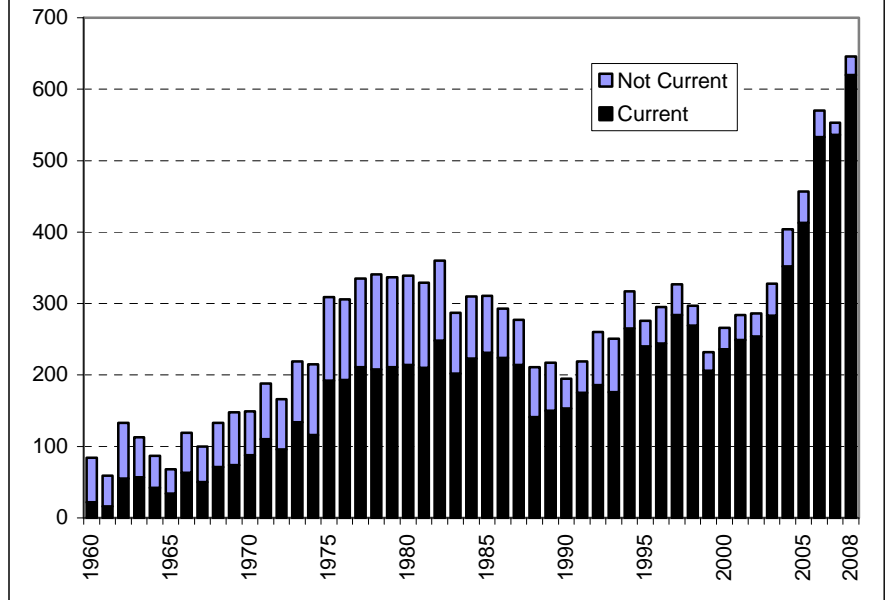


LPNs Licensed in 2002-2008

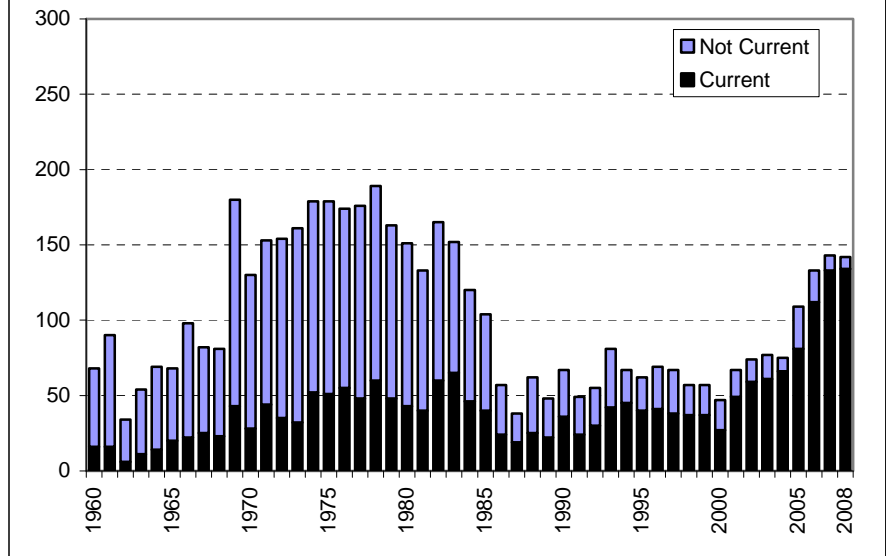


Licensed practical nurses show far more diversity than RNs in Milwaukee County. Less than half of the LPNs licensed in the 1980s have current LPN licenses. Some may have obtained RN licenses; others have left the field or retired. For the last three years about 140 LPNs a year have been newly credentialed.

Registered Nurses by Year First Licensed



Licensed Practical Nurses by Year First Licensed

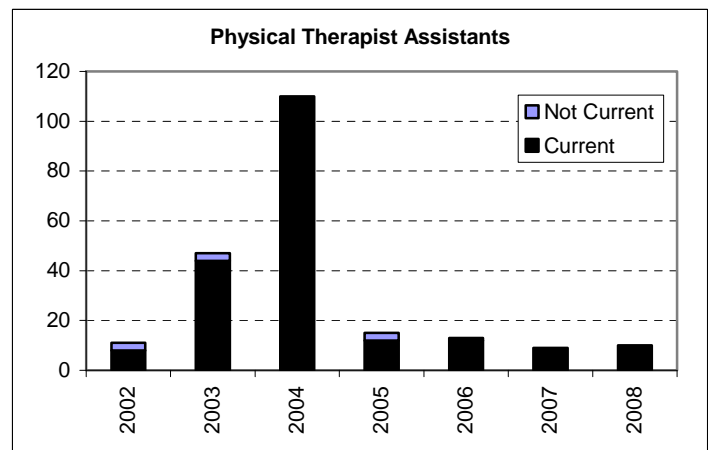
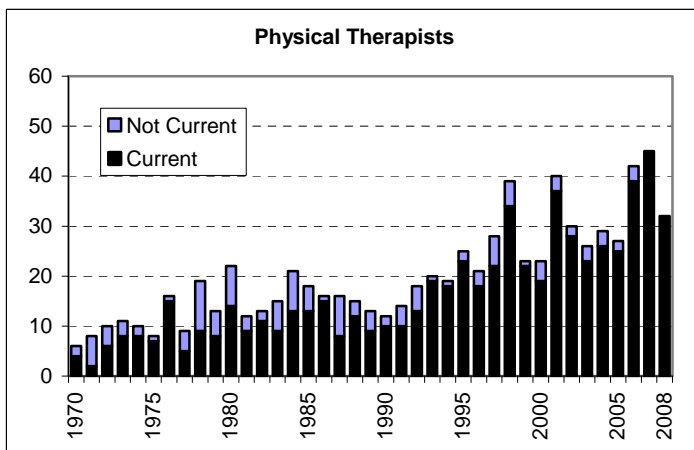
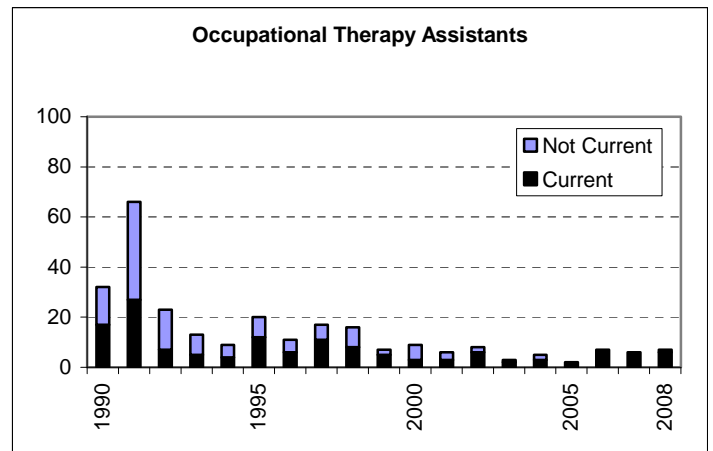
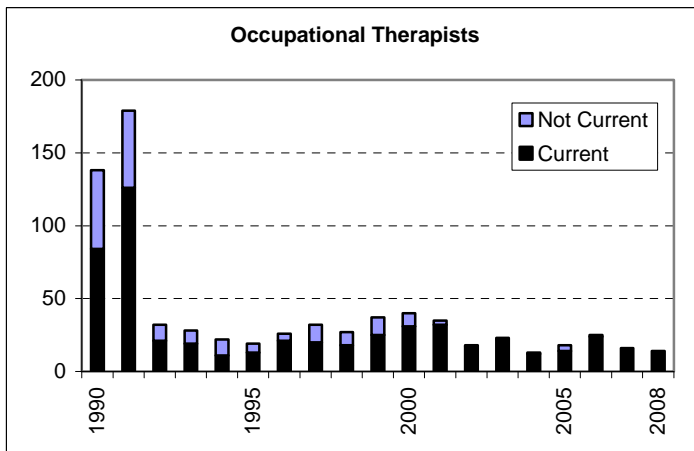
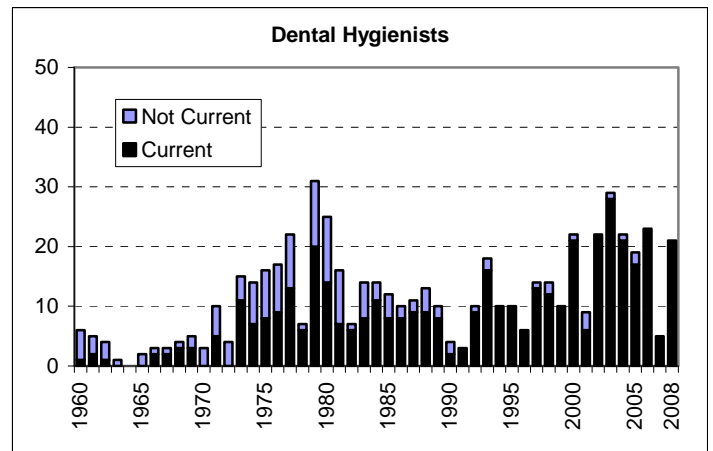


JOB DEMAND FOR RNS: The Employment and Training Institute job openings surveys have consistently shown very high job demand for registered nurses – both for newly trained staff and for RNs and BSNs with considerable professional and supervisory experience. The 2009 job opening survey indicated that nursing demand was abating somewhat – with estimated openings in the region for 731 registered nurses (450 full-time and 281 part-time).

JOB DEMAND FOR LPNs: In May 2009 LPNs were accepted for about 1 in 5 job openings for nurses (161 LPN openings) up from the 1 in 10 acceptance rate reported by employers in May 2006. Nearly all supervisory nursing positions require an RN or Bachelor of Science nursing degree.

Health Professionals from Milwaukee County by Year First Licensed

- On average, 19 **dental hygienists** have been newly credentialed each year since 2000. Nearly a fourth (23%) of those currently licensed received their credentials before 1980.
- For the last five years an average of only 17 new **occupational therapists** a year have been newly credentialed.
- For the last three years only 6-7 **occupational therapy assistants** a year have been newly credentialed from Milwaukee County.
- About 40 residents a year have been obtaining **physical therapist** credentials in the last 3 years.
- In the last four years an average of only 12 **physical therapist assistants** were newly credentialed each year.



Milwaukee County Licensed Health Professional at end of 2008

7 Professions	Currently licensed	% Minority		% Female
		Before 2000	2000-2008	
Registered Nurses	9,290	8%	23%	94%
Licensed practical nurses	1,936	23%	57%	94%
Physical therapists	648	4%	11%	99%
Physical therapist assistants	205	---	16%	79%
Occupational therapist	540	4%	8%	94%
Occupational therapy assistants	140	8%	8%	95%
Dental hygienists	422	4%	16%	98%

The University of Wisconsin-Milwaukee Employment and Training Institute prepared a series of studies in 2009 for the Milwaukee Area Workforce Investment Board, Regional Workforce Alliance, and the Greater Milwaukee Foundation to describe the characteristics of the local labor force, identify the education and training needs of the workforce in key occupations, and detail barriers to employment for targeted populations. The research uses institutional, administrative and census data bases to aid MAWIB in setting priorities and improving strategies for service to workers during the difficult economic period the community is now facing.

The full study is posted on the ETI's website at www.eti.uwm.edu.

Milwaukee Drill photo courtesy of Milwaukee Electric Tool Corporation