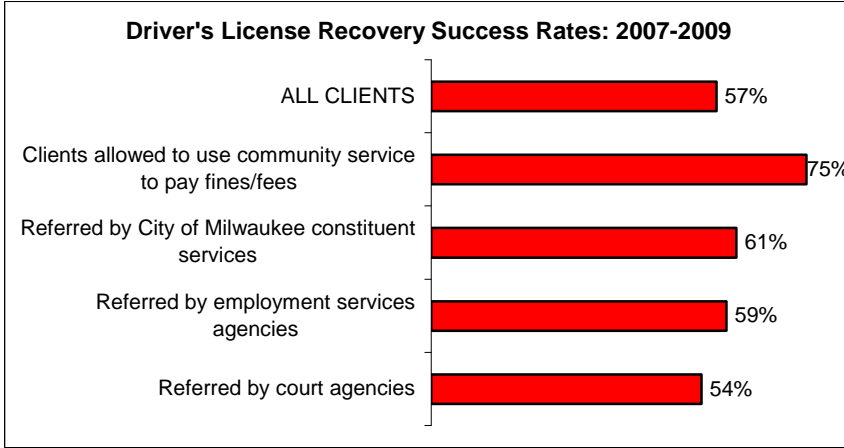




Milwaukee Drilldown, June 2010

for the Milwaukee Area Workforce Investment Board, Inc.

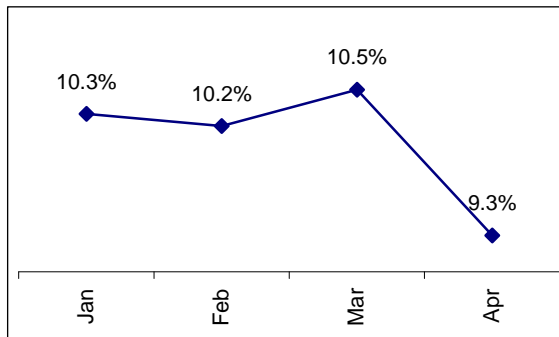
Driver's license recovery program continues to show high success rates; more clients are difficult-to-serve.



- Over 5,000 Milwaukee County residents received case management services or license recovery planning advice from the Center for Driver's License Recovery & Employability from 2007 through 2009.
- The program continues to reach the hard-to-serve target populations -- 66% males, 92% minorities (83% African Americans), all low-income. Clients in 2009 showed higher unemployment, more referrals from the courts and state Department of Corrections, and 62% had 3 or more legal problem areas.
- Success rates remain high – at 57% for the 3 year period.

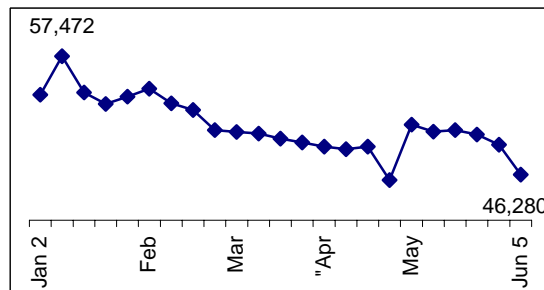
Milwaukee County unemployment rates dropped to 9.3% in April.

The unemployment rate for City of Milwaukee residents improved from 12.3% in March to 11.1% in April 2010.



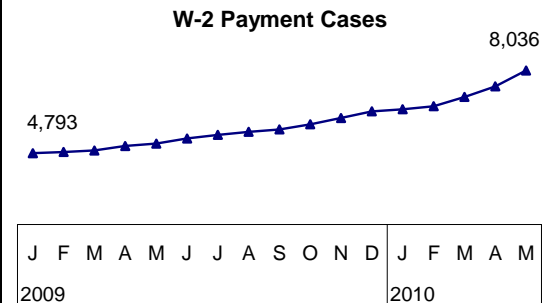
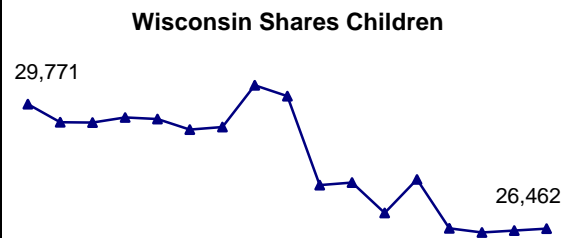
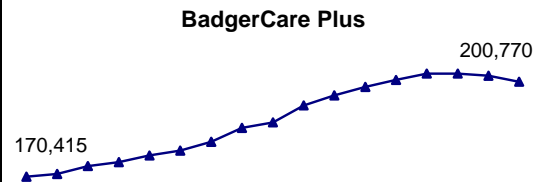
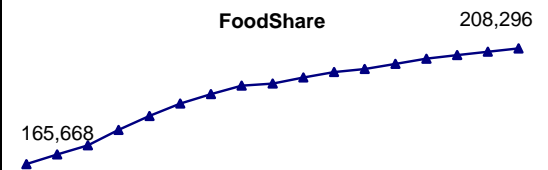
46,280 laid-off workers on UI

The volatility of the rolls of laid-off workers receiving unemployment insurance (from 57,472 the 2nd week in Jan. 2010 to 46,280 the 1st week in June 2010) indicates that job security remains a critical concern for employed workers.



Safety Nets for Milwaukee County Residents: Jan. 2009 – May 2010

- FoodShare enrollments continue to climb.
- BadgerCare Plus enrollments increased for children and parents and declined for single adults in the Core Plan, under a temporary enrollment cap.
- 13,982 families received Wisconsin Shares subsidies for 26,462 children in May.
- W-2 payment cases remain low (8,036 families in May 2010).



Drilldown Data Sources: Wisconsin departments of Children and Families, Health Services, and Workforce Development. (6/18/2010); **Third Year Evaluation of the Center for Driver's License Recovery & Employability** (University of Wisconsin-Milwaukee Employment and Training Institute, 2010).

Prepared by the Employment & Training Institute, University of Wisconsin-Milwaukee and the Milwaukee Area Workforce Investment Board

Milwaukee Drill photo courtesy of Milwaukee Electric Tool Corporation