



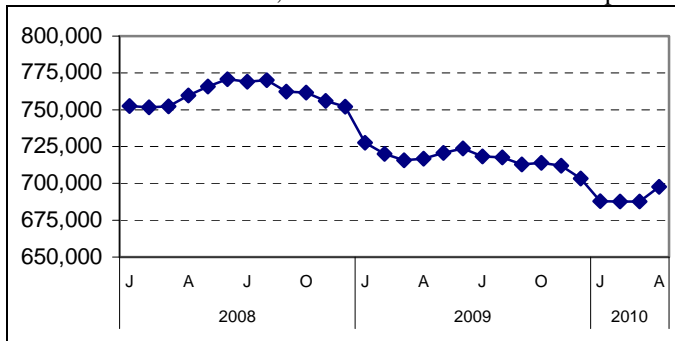
Milwaukee Drilldown, May 2010

for the Milwaukee Area Workforce Investment Board, Inc.

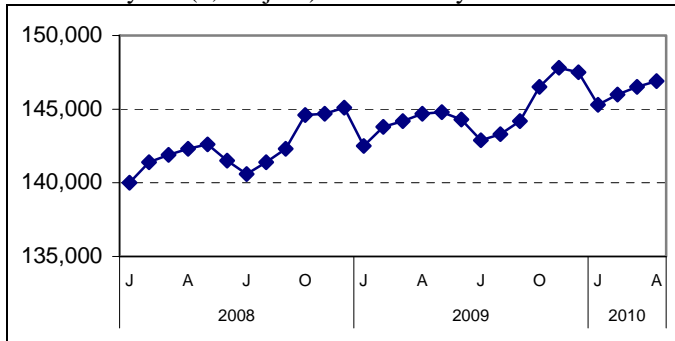
Monthly Employment for Private Firms in the Milwaukee Metro Area: Jan. 2008-April 2010

CES (Current Employment Statistics) data for Milwaukee, Ozaukee, Washington and Waukesha counties (non-govt, non-farm)

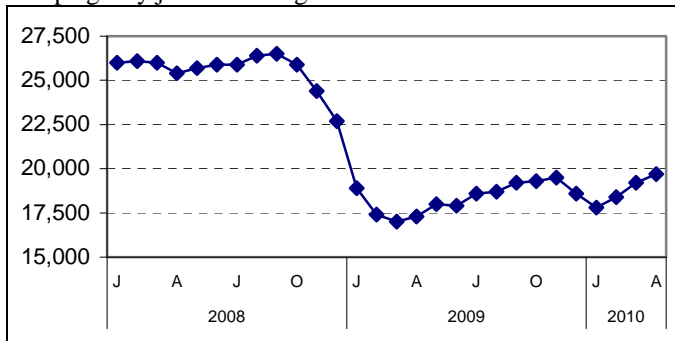
Total private sector employment is down by 55,000 since January 2009. CES estimated a 9,800 increase from March to April 2010.



Employment in health and educational services (non-govt.) has increased by 5% (6,900 jobs) since January 2008.



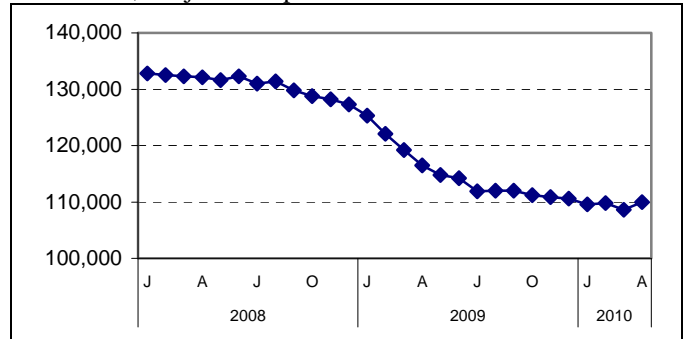
Temp agency jobs are rising but still well below their 2008 levels.



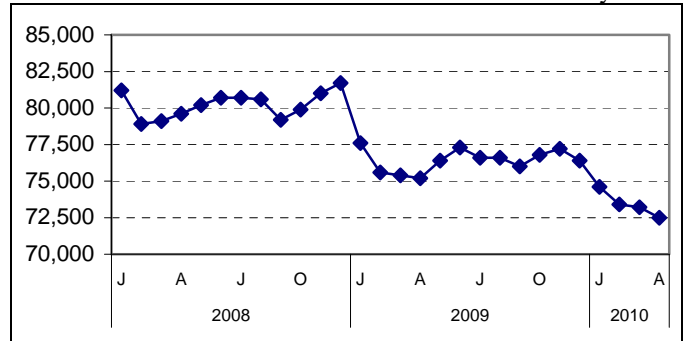
Unemployment: The March 2010 unemployment rate in Milwaukee County (10.5%) was at its highest level in the last 20 years. The rate in the city of Milwaukee was estimated at 12.3%, also a 20-year high.

Workers on UI: 51,020 laid-off workers in Milwaukee County were receiving unemployment insurance at the end of April.

Manufacturing employment dropped by 18% (24,200 jobs) from January 2008 to March 2010 and then rose by an estimated 1,400 jobs in April.



Jobs in retail trade are at their lowest level in the last 3 years.



Firm closings and layoffs: In April three firms in Milwaukee County reported 233 anticipated layoffs and plant closings to the state: KeHE Distributors in Milwaukee (97), Harley-Davidson Motor Company in Franklin (96), and Regional Elite Airline Services in Milwaukee (40).

Families receiving W-2: The W-2 program showed only modest movement toward enrolling unemployed single parents. In April 7,420 families in the county received W-2 cash support.

Wisconsin Shares: The number of Milwaukee County children in subsidized child care totaled 26,412, down by 3,570 from September.

FoodShare: Enrollments in FoodShare are at an all-time high in Milwaukee County, with 207,100 individuals (children and adults) receiving benefits in April.

BadgerCare Plus: One in 5 Milwaukee County residents is enrolled in BadgerCare Plus. Enrollments totaled 202,649 in April, down slightly from the prior month due to a 13% drop in single adults covered by the core plan.

Drilldown Data Sources: Wisconsin departments of Children and Families, Health Services, and Workforce Development. (5/18/2010)