



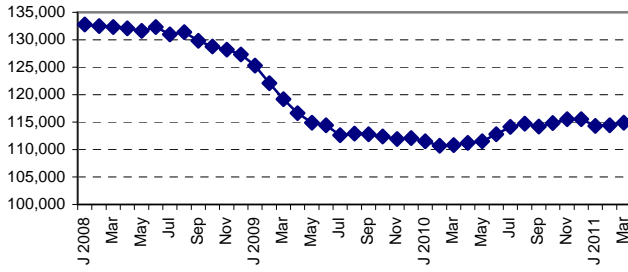
Milwaukee Drilldown, April 2011

for the Milwaukee Area Workforce Investment Board, Inc.

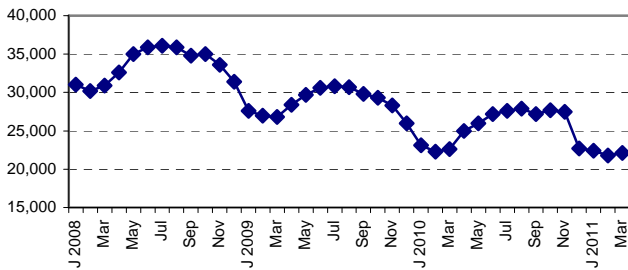
Monthly Employment: Select Industries in the Milwaukee Metro Area, Jan. 2008-March 2011

The employment trends shown below are based on Current Employment Statistics (CES) survey data from employers in Milwaukee, Ozaukee, Washington, and Waukesha counties.

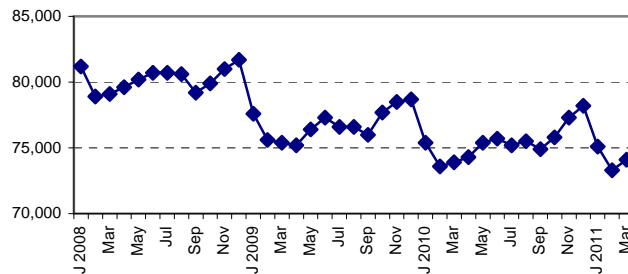
Manufacturing



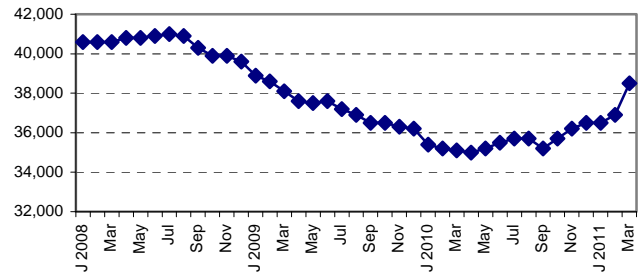
Construction



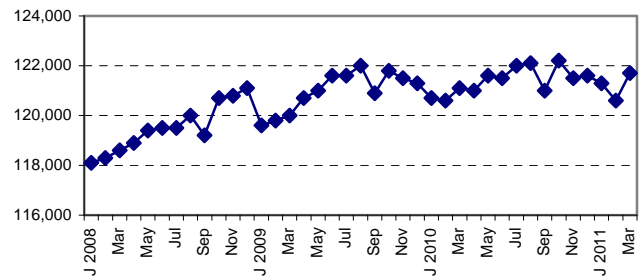
Retail Trade



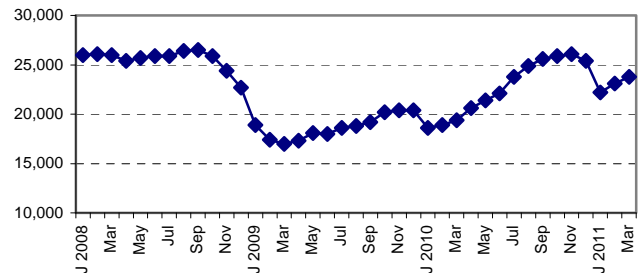
Wholesale Trade



Health and Social Assistance



Employment Services



Unemployment: The March 2011 unemployment rate in Milwaukee County was reported at 8.8% with an estimated 426,821 workers employed and 40,969 unemployed workers actively seeking work.

Workers on UI: In mid-April 36,354 laid-off workers in Milwaukee County were receiving unemployment insurance, down by 2,400 from a month earlier.

Drilldown Data Sources: Wisconsin departments of Children and Families, Health Services, and Workforce Development (4/25/2011). The CES is a federal-state cooperative monthly survey of business establishments; employment estimates are adjusted annually, principally using tax report data.

Firm closings and layoffs: In March firms in Milwaukee County reported 152 anticipated new plant closings to the state: CSM Bakery Products in Oak Creek (100) and JC Penney Asset Recovery Center in Wauwatosa (52).

Wisconsin Shares: 13,506 Milwaukee County families received child care subsidies for 25,194 children in March.

Families receiving W-2: 10,116 families in the county received W-2 cash support.

FoodShare: Enrollments in FoodShare were at an all-time high in Milwaukee County, with 218,276 individuals (children and adults) receiving benefits in March.

BadgerCare Plus: Enrollments totaled 202,114 in March, with enrollments in the non-parent Adult Core Plan (N=12,985) down 11% from December.

Prepared by the Employment & Training Institute, University of Wisconsin-Milwaukee and the Milwaukee Area Workforce Investment Board

Milwaukee Drill photo courtesy of Milwaukee Electric Tool Corporation