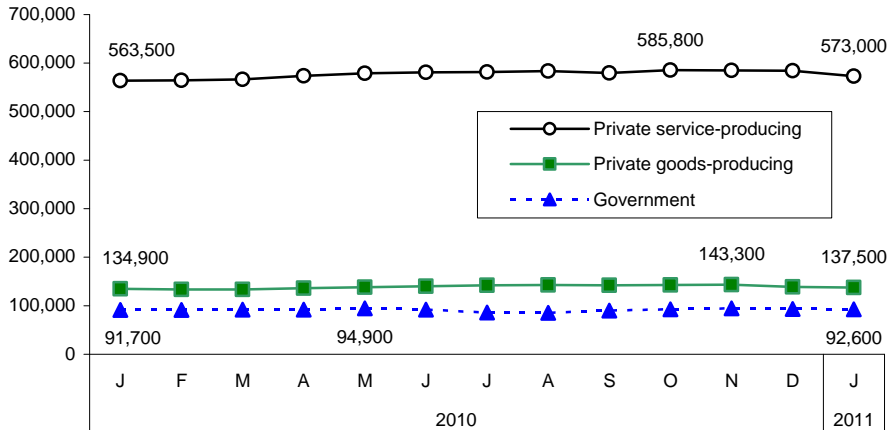




Milwaukee Drilldown, March 2011

for the Milwaukee Area Workforce Investment Board, Inc.

Est. Monthly Employment in the Milwaukee Metro Area: January 2010 - January 2011 (CES data for Milwaukee, Ozaukee, Washington and Waukesha counties)

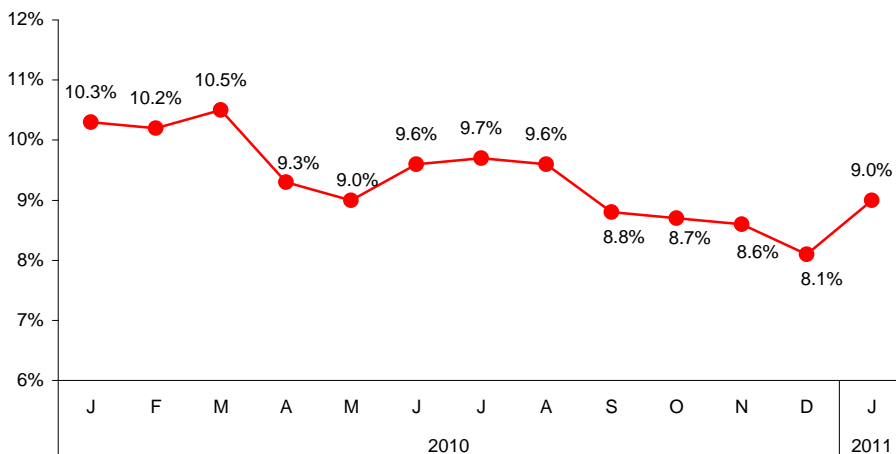


In January 2011 private service-producing firms accounted for 573,000 jobs (71%), private goods-producing firms accounted for 137,500 jobs (17%), and governments (local, federal and state) accounted for 92,600 jobs (12%), according to the Current Employment Statistics (CES) estimates for the Milwaukee metro area.

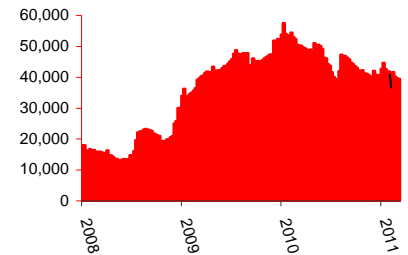
Private sector employment, both service-producing and goods-producing, was down from highs earlier in Fall of 2010 while above the levels seen in January 2010.

The estimated unemployment rate for Milwaukee County residents, which had dropped to 8.1% in December, was back up to 9.0% in January 2011.

Est. Unemployment in Milwaukee County



Workers on UI: In early March, 39,161 laid-off workers in Milwaukee County were receiving weekly unemployment insurance payments.



Firm closings and layoffs: No new plant closing or mass layoff notices were issued by firms in Milwaukee County in February.

Families receiving W-2: In February 10,005 families in the county received W-2 cash support.

Wisconsin Shares: 12,937 Milwaukee County families received subsidized child care in February 2011, down by 560 from the prior month.

FoodShare: Enrollments in FoodShare are at an all-time high in Milwaukee County, with 217,100 individuals (children and adults) receiving benefits.

BadgerCare Plus: One in 5 Milwaukee County residents is enrolled in BadgerCare Plus. Enrollments totaled 202,000 in February 2011. Enrollments of adults without children (in the Core Plan) were down 4% over January.

Drilldown Data Sources: Wisconsin departments of Children and Families Health Services, and Workforce Development. Jobs data are not seasonally adjusted. (3/16/2011)