

Message from the Dean

The College of Letters and Science welcomes these new faculty members to our campus. The quality of these new colleagues demonstrates that our long-term commitment to maintaining research and teaching at a very high level is alive and well. Please take a few minutes to read these brief introductions. If you are inclined to contact any of these new colleagues, I know that they would like to hear from you. — Richard Meadows

(Click on the name with each photo to link to contact information, or see the list on page 7.)

HUMANITIES



Kevin Browne

Kevin Browne, assistant professor, English, earned his PhD in Rhetoric and Composition from The Pennsylvania State University, University Park (2009). Most recently, he was a graduate assistant at Penn State, teaching Rhetoric and Composition, Rhetoric and Composition-U.S. Cultures Composition, and Caribbean History in the 20th Century.

Originally from Trinidad and Tobago, Browne completed his undergraduate studies in English at Medgar Evers College of the City University of New York. His scholarly interests include rhetorical theory, cultural studies, literary studies and research in composition. His dissertation is focused on the discursive practices of people of Caribbean heritage in the United States and their applications, as well as the myriad implications for democratic involvement and recognition in the American multicultural.

He has self-published *Rhetorical Address* and *Concrete Natives*, poetry and photographs (2006); and *Boheme*:

Escapism & Reflection (1999). Invited talks have included “Research in Caribbean Rhetoric,” University of Louisville, Ky., 2007; “Spoken Word, Speaking Words,” New York University, 2002; and “On Performance,” Pratt University, Brooklyn, N.Y., 2002.

Browne has appeared on several segments of the New York television series, *Study with the Best*, and is a member of the National Council of Teachers of English and the Rhetoric Society of America.

Browne: *Though new to Milwaukee, there is such genuine excitement – when I think and talk to others about the city, the faculty, and the wonderful students I’ve met, for instance – that it feels almost like a homecoming. And I am looking forward to it.*



Elena Gorfinkel

Elena Gorfinkel, assistant professor, Art History, received her PhD with distinction in Cinema Studies from New York University (2008). Most recently, she was a visiting assistant professor, Film Studies Program, Bryn Mawr

College, Penn. Gorfinkel’s PhD dissertation is titled “Indecent Desires: Sexploitation Cinema, 1960s Film Culture, and the Adult Film Audience.”

Her research and teaching interests include American film history and historiography, independent and marginal cinemas, gender and sexuality studies, reception studies and histories of movie-going, and international art cinema. Gorfinkel’s publications include “Wet Dreams: Erotic Film Festivals of the Early 70s and the Utopian Sexual Public Sphere,” *Framework: The Journal of Cinema and Media*, Vol. 47, No. 2 (Fall 2006), as well as essays on cult film, cinephilia and exploitation in *Cineaste*, and the collections, *Cinephilia: Movies, Love & Memory* (University of Amsterdam Press, 2005), and *Under-ground USA: Filmmaking Beyond the Hollywood Canon* (Wallflower Press, 2002).

She is currently co-editing the anthology *The Place of Moving Image* contracted with University of Minnesota Press, as well as revising her dissertation into a book manuscript.

Gorfinkel: *I am very excited to be joining the faculty at UWM and its vibrant intellectual community, and to be contributing to an already rich palate of film studies and art history courses. In the short time I have spent in Milwaukee, I have been utterly impressed with its wide artistic and cultural opportunities, its wonderfully varied architecture, its working class history, and its unique sense of place. I look forward to getting to know the city and making it home.*



Sang-Yeon Kim

Sang-Yeon Kim, assistant professor, Communication, earned his PhD in Communication from Michigan State University, East Lansing (2009).

Previously, he was a teaching and research assistant in that university's Department of Communication. His dissertation is titled "Cultural Difference in the Persuasive Impact of a Role Norm Message." Kim came to Milwaukee from Seoul, South Korea, to study for his MA at UWM from 2003-05.

Kim's areas of concentration are cross-cultural communication-social norms; social identity; persuasion and social influence; and quantitative research methods-statistics, research design. His latest journal article is "Differences in Cognitive Relativity between Americans' and Koreans' Assessments of Self," *Journal of Intercultural Communication Research* 37(2), (2008).

His papers in preparation are "Empirical Demarcation of Humility from Self-Deprecation," "Humility and Source Credibility in Three Cultures: US, Singapore, Japan," "Use of Role-Present Injunctive Norms in Health Campaign Message," and "Human Biology as a Determinant of Cross-Cultural Difference."

Kim: *I am more than happy to rejoin UWM, where I earned my MA in Communication four years ago. As a cross-cultural scholar, I hope to make practical contributions to the school and the community by further investigating the cognitive difference between the East and West, and by readying students to be culturally adaptive in the global community.*

Simonetta Milli Konewko, assistant professor, French, Italian, and Comparative Literature (FICL), holds a PhD in Modern Studies with a specialization in Twentieth Century Italian literature and theories of compassion from the University of Wisconsin-Milwaukee (2008). Her thesis is "Fictions of Compassion in Italian Neorealist Literature and Film." Most recently, she was a senior lecturer at UWM in FICL.

She has served the University since 1994, and previously was an instructor at the Educational Foundation and the Westminster School in Florence, Italy; and the D.M.C. School Città di Castello.

Milli Konewko's presentations include "Models of Compassion in Primo Levi's *Survival in Auschwitz*," *New Directions in Levi Criticism*, Taormina, Italy. Her most recent talk was "*Smoke over Birkenau, Compassion, and Family Relationships*," *The Legacy of the Holocaust: Family and the Holocaust*, The Jagiellonian University, Krakow, Poland, 2009.



Simonetta Milli Konewko

Her memberships include the Society for Italian Studies, Midwest Modern Language Association, Canadian Society for Italian Studies, Italian Federation of Popular Traditional Culture, Association for the Study of Modern Italy and the American Association of Teachers of Italian.

Milli Konewko: *My desire is to create genuine connections with students and support them to find their own way to be engaged in learning and in turn to motivate others in pursuing understanding and appreciation of the material. I would like to help students improve their academic skills such as critically reading literary and cinematographic texts to understand Italy and Italians, and to pursue their own goals, whether as educator, student, or in other capacities.*

NATURAL SCIENCES



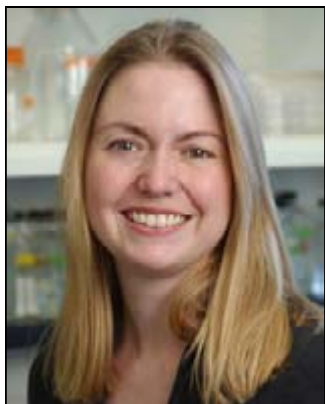
Alexander Arnold

Alexander Arnold, assistant professor, Chemistry and Biochemistry, received his PhD in Organic Chemistry from the University of Groningen (RUG), The Netherlands (2002), after completing his undergraduate studies in Chemistry at Rheinische-Westfälische Technische Hochschule Aachen, Germany. Before coming to UWM, he was a postdoctoral researcher at the University of California, San Francisco, in the Department of Pharmaceutical Chemistry and staff scientist at St. Jude's Children's Research Hospital, Department of Chemical Biology and Therapeutics, Memphis, Tenn.

Arnold taught at RUG and UC-San Francisco, and supervised research technicians and postdoctoral researchers at St. Jude's. He is a member of the American Chemical Society and was honored at St. Jude's as Employee of the Quarter.

He has published 28 peer-reviewed articles, given invited talks and been involved in several successful grant applications with his former Principal Investigator Kip Guy. His articles were published in chemistry and biochemistry journals such as *Journal of the American Chemical Society*, *Journal of Organic Chemistry*, *Journal of Biological Chemistry*, *Molecular Endocrinology* and *Science*.

Arnold: *I am looking forward to establishing a hybrid chemistry/biochemistry laboratory focusing on the development of chemical probes for vitamin D receptor biology. I also anticipate working collaboratively with scientists from UWM, the Medical College of Wisconsin and Marquette University.*



Sonia Bardy

Sonia Bardy, assistant professor, Biological Sciences, holds a PhD in Microbiology and Immunology from Queen's University, Kingston, Ontario, Canada (2004). Most recently, she was a postdoctoral research fellow, research investigator at the Department of Molecular, Cellular and Developmental Biology, University of Michigan, Ann Arbor.

Her publications include "Polar Explorations: Recent Insights into the Polarity of Bacterial Proteins," *Current Opinion Microbiology* 10(6): 617-23; "Polar Localization of a Soluble MCP of *Pseudomonas Aeruginosa*," *Journal of Bacteriology* 187(22): 7840-7844; and "Site-directed Mutagenesis Analysis of Amino Acids Critical for Activity of the Type 1 Signal Peptidase of the Archaeon *Methanococcus Voltae*," *Journal of Bacteriology Biotechnology* 7:41-51.

Bardy's honors include the National Institutes of Health K99 Pathway to Independence Award (2007-09) and a Natural Sciences and Engineering Research Council of Canada Post-Doctoral Fellowship (2005-07).

Included in her list of invited lectures are "Localization of Chemotaxis Proteins in *Pseudomonas Aeruginosa*," Department of Life Sciences, University of Toronto at Scarborough, Ontario; and "Genetic and Biochemical Analysis of Archaeal Flagella," Division of Biological Sciences, Nagoya University, Japan.

Bardy's research program at UWM focuses on the spatial organization of proteins in *Pseudomonas aeruginosa*, asking the question: "How do bacteria know where to put things?"

Bardy: *I'm looking forward to putting down roots in Milwaukee while creating a vibrant and active research program.*

Madhusudan Dey, assistant professor, Biological Sciences, earned his PhD in Life Science from the School of Life Sciences, Jawaharal Nehru University, New Delhi, India (2000). Previously, he was a research fellow at the National Institutes of Health (NIH), Laboratory of Gene Regulation and Development, Bethesda, Md. Dey is the recipient of a FARE Award for research excellence from the NIH. His research focuses on gene expression and regulation through protein phosphorylation.

In addition to his research activities, Dey has served as a mentor for the Howard Hughes Medical Institute/Montgomery County Public Schools Intern Program at the NIH, and as an ad hoc reviewer for *The Journal of Biological Chemistry*, *Trends in Biochemical Sciences*, *In vitro Biology*, *Plant Science* and *Molecular Cell*. Dey's presentations include Cold Spring Harbor Laboratory Meeting on Translational Control, 2004 and 2006.

Dey's many publications include "Mechanistic Link between PKR Dimerization, Autophosphorylation, and eIF2a Substrate Recognition," *Cell* 122, 901-913 (2005); and "Structure of the Dual Enzyme Ire1 Reveals the Basis for Catalysis and Regulation in Nonconventional RNA Splicing," *Cell* 132, 89-100 (2008).



Madhusudan Dey

Dey: *My research interests are gene expression and regulation through protein phosphorylation. I hope to build an interdisciplinary research program in molecular and biochemical studies in my lab and through collaborations both within and outside of the University involving undergraduate and graduate students. I look forward to teaching courses in Biochemistry and Molecular Biology, to sharing the excitement of these fields with students, and to joining and getting to know the other UWM faculty.*

Peter Hinow, assistant professor, Mathematical Sciences, received a PhD in Mathematics from Vanderbilt University, Nashville, Tenn. (2007). Before coming to UWM, he was a postdoctoral associate at the Institute for Mathematics and Its Applications, University of Minnesota, Minneapolis, teaching Multivariable Calculus.



Peter Hinow

His research interests are applied mathematics, partial differential equations and mathematical biology. He holds a Diplom-Mathematiker from Dresden University of Technology, Germany. In 1999 and 2002, he was a visiting graduate student at UWM.

Hinow organized a mini-symposium, "Interdisciplinary Modelling of Cancer Treatment," at the European Conference on Mathematical and Theoretical Biology, Edinburgh, Scotland. His presentations include workshops on population dynamics and mathematical biology at the Centre International de Recontres Mathématiques in Marseilles, France, and a special session on rational drug design at the 91st Canadian Chemistry Conference in Edmonton, Alberta.

Hinow's recent publications include "Predicting the Drug Release Kinetics of Matrix Tablets," *Discrete and Continuous Dynamical Systems B* 12:261 (2009), "A Spatial Model of Tumor-Host Interaction: Application of Chemotherapy," *Mathematical Biosciences and Engineering* 6:521 (2009), and "A Mathematical Model Quantifies Proliferation and Motility Effects of TGF-Beta on Cancer Cells," *Computational and Mathematical Methods in Medicine* 10:71 (2009).

Hinow: *I look forward to doing research and teaching Mathematical Biology and to exploring Lake Michigan in both winter and summer.*



Xiaohua Peng

Xiaohua Peng, assistant professor, Chemistry and Biochemistry, holds a PhD in Organic and Bioorganic Chemistry from the University of Osnabrueck, Germany (2006). Her thesis is titled “Nucleosides and Oligonucleotides Containing 7-deazapurines: Synthesis, Tautomerism, Base Pairing, and Mismatch Discrimination in Duplex DNA.”

Most recently, she was a postdoctoral fellow at Johns Hopkins University, Baltimore, with a research focus on DNA interstrand cross-linking by modified nucleotides. Also, she taught Organic Chemistry and Organic Chemistry Laboratory at Fudan University, Shanghai, China.

She is a bioorganic chemist with a strong background in synthetic organic and bioorganic chemistry. Her skills include synthesis and purification of organic compounds, characterization of intermediates using a full scope of instrumentation, designing modified nucleosides and phosphoramidites, synthesizing DNA and RNA, DNA-footprinting, ELISA-assay, enzyme methodology and gel electrophoresis.

Peng's honors include the Chinese Government Award for Outstanding Self-Financed Students Abroad. She is a member of the American Chemical Society, Organic Chemistry Division and holds patents, including one for the process for preparing adrenergic beta-excitomoters by combination and disconnection methods.

Peng: *I am hoping to become a successful scientist in the field of new drug discovery and/or nucleic acid chemistry. I will contribute to UWM not only as a researcher, but also as an excellent academic nurturer.*

Christopher Quinn, assistant professor, Biological Sciences, received a PhD in Neurobiology from Yale University, New Haven, Conn. (2001). He is a postdoctoral fellow/instructor in the Department of Pathology at the University of Medicine and Dentistry of New Jersey (UMDNJ), Piscataway, and will arrive here in January.

His teaching experience includes Research in Cell Biology and Neuroscience, and Selected Topics in Cell and Developmental Biology, Rutgers University, Piscataway; and DNA Sequencing, Montclair State University, N.J.

Awards and honors he has received include the Individual National Research Service Award, UMDNJ Foundation Fellow, Henry Rutgers Scholar and Rutgers College Merit Scholarship.

Research support for Quinn includes Individual Ruth L. Kirschstein National Research Service Award, “Molecular Mechanisms of MIG-10 Function in Axon Guidance,” and a National Institutes of Health R03 Grant. His most recent publications are “Axon Guidance: Asymmetric Signaling orients polarized outgrowth,” *Trends in Biology* (in press); and “Ced-10/Rac1 Mediates Axon Guidance by Regulating the Asymmetric Distribution of MIG-10/lamellipodin,” *Current Biology*, 18:808-13 (2008), which was selected by the Faculty of 1000 as a “Must Read.”



Christopher Quinn

Quinn: *I look forward to working with graduate and undergraduate students in classrooms and laboratories, to learn more about the research being conducted at UWM, and to engage in collaborative studies.*

Nicholas Silvaggi, assistant professor, Chemistry and Biochemistry, earned his PhD in Biophysics from the University of Connecticut, Storrs (2003). Most recently, he was a postdoctoral fellow in the Department of Physiology and Biophysics at the Boston University School of Medicine. His research focus was structure-based drug design of potent botulinum neurotoxin inhibitors, lanthanide-binding tags for X-ray crystallographic structure determination, and structural studies of human phosphomannomutase 1 and 2.



Nicholas Silvaggi

Silvaggi taught Protein Chemistry as a teaching assistant at Boston University, and has won a National Institutes of Health Research Training Grant Fellowship.

His invited lectures include “Structures of Clostridium Botulinum Neurotoxin Serotype A Light Chain Complexed with Small-Molecule Inhibitors Highlight Active-site Flexibility” at the Interagency Botulism Research Coordinating Committee Meeting.

Among his publications is “Catalytic Features of the Botulinum Neurotoxin A Light Chain Revealed by High Resolution Structure of an Inhibitory Peptide Complex,” *Biochemistry* 47:5736-5745.

Silvaggi: *I am very happy to be joining a campus community that is enthusiastically building toward the future. The level of energy and excitement was evident to me on my first visit. I am particularly looking forward to being a part of the drug discovery program at UWM; to helping build it into something that other universities will look to as a model. I am also tremendously anxious to get my own laboratory up and running and to produce some quality science of my own.*



Andrew Ulijasz

Andrew Ulijasz, assistant professor, Biological Sciences, holds a PhD in Cellular and Molecular Biology, Department of Pharmacology, University of Wisconsin, Madison (2005). His thesis is titled “Iron Regulation in *Strotococcus Pneumoniae*.” Before coming to UWM, he was a postdoctoral fellow, Department of Genetics, UW-Madison, where he researched phytochrome structure and function. As a graduate student, he studied at the Department of Microbiology, Groningen Biomolecular Sciences and Biotechnology Institute, University of Groningen, Haren, Netherlands, where he researched multiple drug resistance ABC transporter function.

He mentored several students including undergraduates enrolled in research for credits and four medical doctors (Infectious Disease, University of Wisconsin Hospitals) in microbiology and molecular biology techniques.

Ulijasz’s publications include “Solution Structure of a Cyanobacterial Phytochrome State,” *Journal of Molecular Biology* 383:403-413; and “Characterization of Two Thermostable Cyanobacterial Phytochromes Reveals Global Movements in the Chromophore-Binding Domain during Phytoconversion,” *Journal of Biological Chemistry* 283:21251-21266.

Ulijasz: I am excited to start at the University this winter as part of the UWM Research Growth Initiative. Being from Wisconsin and the greater Midwest area, I feel privileged to be part of a statewide effort to enhance our Wisconsin schools to compete on a global level. As a new assistant professor, I hope to make a valuable addition by educating students and contributing to the growing competitiveness of UWM research and technology.

SOCIAL SCIENCES

Benjamin Campbell, assistant professor, Anthropology, earned a PhD in Anthropology from Harvard University, Cambridge, Mass. (1990). He arrived at UWM in 2007 and served as a visiting assistant professor. His major areas of interest are biological anthropology, the evolution of the human brain, hormones and Africa. His research experience includes the genetics and hormonal determinants of sensation-seeking and decision-making in young men, analysis of behavioral survey data in adolescents, as well as ethnographic fieldwork in Kenya and Zimbabwe, Africa, archival research in Sion, Switzerland, and archaeological experience in Tautavel, France.

Campbell’s most recent publication is “Energetics and the Human Brain,” scheduled to appear in *Human Evolutionary Biology* (Cambridge University Press, 2010). His most recent invited presentation was “Embodiment: The View from Neuroanthropology,” given at the Human Development Workshop, University of Chicago, April 2009. Also, this year, he organized and co-chaired symposia, “Human Life History in Primate Perspective,” at the annual meeting of the American Association of Physical Anthropologists, Chicago.



Benjamin Campbell

He has received grants and support from the Wenner-Grenn Foundation, the National Science Foundation, and the Harvard University Center for European Studies. Campbell is a member of the American Anthropology Association of Physical Anthropologists and the Human Biology Association.

Campbell: I am looking forward to the chance to collaborate with colleagues at UWM as I pursue my research on human development and brain evolution.



Grace Chikoto

Grace Chikoto, assistant professor, Political Science, earned a PhD in Public Policy from Georgia State University/ Georgia Institute of Technology joint doctoral program, Atlanta (2009). Originally from Zimbabwe, Chikoto holds an Honors BA in Education from Africa University, Zimbabwe (2000), and an MPA in Non-profit management from Georgia Tech (2004). Before coming to UWM, she was a research assistant/teaching assistant in the Andrew Young School of Policy Studies-Nonprofit Studies, Georgia State University.

Her areas of concentration are non-profit management and research, and program and policy implementation and evaluation. Her dissertation is titled “Government Funding and NGO Autonomy: From Resource Dependence and Tool Choice Perspectives.”

Chikoto’s articles include “Legislative Influences on Performance Management Reform,” *Public Administration Review* 68 (2), 253-265 (March/April 2008), and her present research project is “Financial Determinants of Clergy Executive Compensation.”

She is a member of the Association for Research on Nonprofit Organizations and Voluntary Associations, Phi Alpha Alpha and the Atlanta Area Evaluation Association.

Chikoto: I fell in love with Milwaukee, so I’m looking forward to making UWM and Milwaukee my home — winter and all. I do hope that I make a difference here, a contribution in the classroom that will result in some positive reversal of destiny for someone.

Antonio Galvao, Jr., assistant professor, Economics, received a PhD in Economics (2009) and an MS in Statistics (2007) from the University of Illinois (UI) at Urbana-Champaign. Most recently, Galvao was an econometrics consultant and research assistant for the Econometrics Lab at the University of Illinois.

His thesis is titled “Essays on Quantile Regression for Dynamic Panel Data Models.” His research and teaching fields are Econometric Theory and Applied Econometrics. Galvao’s publications include “Unit Root Quantile Auto-regression Testing Using Covariates,” forthcoming *Journal of Econometrics*; “Tax Burden, Government Expenditures and Income Distribution in Brazil,” *Quarterly Review of Economics and Finance*, 48, 345-358 (2008); and “Convergence or Divergence in Latin America? A Time Series Analysis,” *Applied Economics*, 39, 1353-1360 (2007).



Antonio Galvao, Jr.

Galvao has received several awards and honors including the 2008-2009 Paul W. Boltz Fellowship from the Department of Economics at UI; the 2007-2008 Robert Ferber Dissertation Award for Excellence in Survey Research as Part of Doctoral Dissertation; the 2006, 2007 and 2008 Brems Graduate Research Award for Outstanding Graduate Research Paper in Economics and the Robert Bohrer Prize for Excellence in Statistical Research from UI. He was named to the Fall 2006 UI List of Teachers Ranked as Excellent by Students.

Galvao: *I look forward to moving to Milwaukee and starting my professional career at this great University. In the Department of Economics at UWM, I will have the opportunity to develop excellence in economic research and teaching.*



Deborah Hannula

Deborah Hannula, assistant professor, Psychology, holds a PhD in Psychology from the University of Illinois, Urbana-Champaign (2005). Before coming to UWM, she was a postdoctoral researcher at the University of California, Davis. She also has worked as an office manager at a forensic psychology practice in Seattle.

Her research focuses on investigating the contributions of the hippocampus and adjacent medial temporal lobe structures to working memory maintenance and long-term memory retrieval using functional magnetic resonance imaging and eye tracking.

Hannula’s publications include “Medial temporal lobe activity predicts successful relational binding in working memory,” *Journal of Neuroscience*, 28, 116-124; and her most cited publication is “The long and short of it: Relational memory impairments in amnesia, even at short lags,” *Journal of Neuroscience*, 26, 8352-8359.

Among her presentations is “Medial temporal lobe contributions to the expression of eye-movement-based relational memory effects,” 2007.

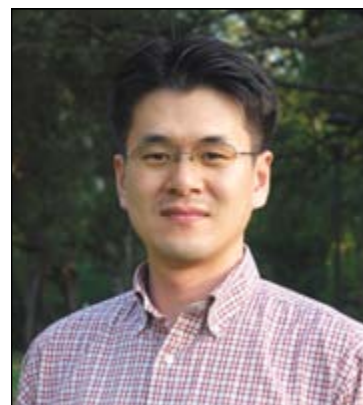
She has served as an ad hoc reviewer for the *Neuropsychology* and *Cognitive, Affective, and Behavioral Neuroscience*, and is a member of the Society for Neurosciences.

Hannula: *It is with great enthusiasm that I return to the Midwest – I grew up north of Chicago. I look forward to working with UWM students when I arrive in January 2010. One of the draws UWM had for me, aside from the stellar Psychology department, was its proximity to Lake Michigan. I intend to dust off the old water skis, sign up for sailing lessons and take full advantage of the amazing view.*

Hanjoon Lee, assistant professor, Psychology, earned a PhD in Psychology from the University of Texas at Austin (2009), with a major in Clinical Psychology and a minor in Statistics. He held a pre-doctoral psychology residency at the University of Mississippi Medical Center/G.V. Sonny Montgomery VA Medical Center Consortium, Jackson, and a residency at the Department of Psychiatry and Behavioral Science, Seoul National University College of Medicine/Seoul National University Hospital, Korea.

Lee holds licenses as a Korean Professional Clinical Psychologist from the Korean Psychological Association and the Korean Clinical Psychological Association, as well as a Mental Health Clinical Psychologist from the Korean Ministry of Health and Welfare.

His work in progress is titled “In Vivo Assessment of Combat Stress Reactions in Iraq Using a Web-Based Diary System,” and his books written in Korean include *Clinical Psychology Readings Based on Case Studies: A Comprehensive Guidebook for Psychological Evaluation, Clinical Interview, and Treatment* (Seoul University Press, 2003).



Hanjoon Lee

Through his graduate training, Lee has received several research awards including Distinguished Student Research Clinical Psychology Award from the American Psychological Association (APA) Division 12, Society of Clinical Psychology, and Excellence in Research Award from the University of Mississippi Medical Center.

Lee: *My goal at UWM and in Milwaukee is to conduct scientific research studies in the field of anxiety disorders to advance our understanding on the maintenance mechanisms and treatment processes of these quite common and debilitating mental problems.*

Katherine Paugh, assistant professor, History, holds a PhD in History from the University of Pennsylvania, Philadelphia (2008), and a graduate certificate in Women's Studies. Previously, she was a visiting assistant professor, History, Sarah Lawrence College, Bronxville, N.Y.



Katherine Paugh

Her dissertation is titled "Rationalizing Reproduction: Race, Disease, and Fertility in the British Caribbean and the Atlantic World, 1763-1833." Her comprehensive exam fields were: gender in the early American and the Atlantic world, early modern history of medicine, and the political and economic history of early America and the Atlantic world.

At Sarah Lawrence, Paugh taught Slavery and Gender in the Atlantic World and History of the Early Caribbean: From Columbus to the Haitian Revolution and Beyond.

Paugh has been awarded grants and fellowships from Harvard University's Atlantic History Seminar, the Gilder Lehrman Institute and the McNeil Center for Early American Studies.

Paugh: I hope I can inspire UWM students to examine the historical past more closely in order to better understand the world around them, and particularly issues of racial, class and gender inequality. I am also looking forward to becoming better acquainted with the bicycle paths along the shores of Lake Michigan.

Robert Smith, associate professor, History, received his PhD in History from Bowling Green State University, Ohio (2002). Previously, he served as an assistant professor, Africana Studies Department, University of North Carolina (UNC) at Charlotte. He has published, *Race, Labor & Civil Rights: Griggs v. Duke Power and the Struggle for Equal Employment Opportunity* (Louisiana State University Press, 2002).

Smith's works in progress are *A Documentary History of African Americans and the Legal Process* (Northern Illinois University Press) and "The Morrill Act" in *Encyclopedia of the Supreme Court in the U.S.* (Thomas Gale).

He received the 2003-04 Black Student Union Faculty of the Year Award at the UNC at Charlotte. Smith also served as the graduate student representative on



Robert Smith

Bowling Green State's board of trustees and president of the graduate student senate at that university. He is a member of the American Society for Legal History and the Africana Cultures and Policy Studies Institute.

Smith: I am especially excited to work with my new colleagues in the History department. They have been very welcoming, and I am sure this is indicative of collegiality throughout the College and across campus. My goals as a faculty member are: to be a positive contributor to our departmental and college culture, to develop stimulating intellectual connections with students and to engage with the greater Milwaukee community alongside other scholars from UWM.

New Faculty Contact Information

All e-mail addresses end with @uwm.edu; all phone numbers start with 414-229-.

Humanities

Kevin Browne, brownek@, Curtin Hall 566, x4569
 Elena Gorfinkel, gorfinke@, Mitchell Hall 147E, x2723
 Sang-Yeon Kim, sangyeon@, Johnston Hall 223, x3917
 Simonetta Milli Konewko, smilli@, Curtin Hall 794, x5871

Natural Sciences

Alexander Arnold, arnold2@, Chemistry Bldg. 144, x4411
 Sonia Bardy, bardy@, Lapham Hall 4214, x4214
 Madhusudan Dey, deym@, Lapham Hall 460, x4309
 Peter Hinow, hinow@, EMS Bldg. E480, x4933
 Xiaohua Peng, pengx@, Chemistry Bldg. 144, x4411

Christopher Quinn, quinnc@, Lapham Hall N413, x4214
 (arriving spring semester 2010)

Nicholas Silvaggi, silvaggi@, Chemistry Bldg. 144, x4411

Andrew Uljasz, uljasz@, Lapham Hall 444, x3928
 (arriving spring semester 2010)

Social Sciences

Benjamin Campbell, campbelb@, Sabin Hall 125C, x6250

Grace Chikoto, chikoto@, Bolton Hall 616, x4635

Antonio Galvao, Jr., agalvao@, Bolton Hall 852, x4429

Deborah Hannula, hannula@, Garland Hall 224, x4746
 (arriving spring semester 2010)

Hanjoo Lee, leehj@, Garland Hall 224, x4746

Katherine Paugh, paugh@, Holton Hall 387, x4924

Robert Smith, smithrs@, Holton Hall 386, x5207