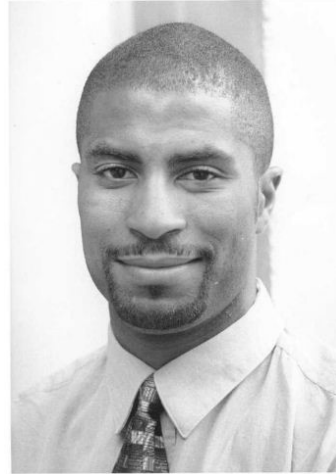


Urban Studies Programs Speaker Series Presents

Dr. Gary Hoover
Associate Professor
University of Alabama



Friday
November 10, 2006
Greene Hall 148
1:30 pm - 3:30 pm

“Economic Growth and Poverty: Does a Rising Tide Lift All Boats?”

Dr. Gary A. Hoover is currently the Assistant Dean for Faculty and Graduate Student Development in the Culverhouse College of Commerce and Business Administration at the University of Alabama. He is also a tenured Associate Professor of Economics in the Department of Economics and Finance.

Dr. Hoover received his PhD in Economics from Washington University in St. Louis in 1998. Since then he has published numerous scholarly research papers, book chapters, and reviews on areas of public policy and income redistribution. He is a leading scholar on academic misconduct, specifically plagiarism, in the economics profession. He is a member of the American Economic Association and the Western Economic Association. In August of 2006 he was named the *William White McDonald Family Distinguished Faculty Fellow*.

As an undergraduate at the University of Wisconsin – Milwaukee he was a McNair scholar in the Ronald E. McNair Baccalaureate Program. Since joining the faculty at the University of Alabama he has been a faculty mentor in that program and now sits on the Board of Advisors. He has also been a visiting scholar at the Institute for Research on Poverty at the University of Wisconsin and a review panelist for the National Science Foundation.