

Comparing Responses to different questions by Data Slicing

Gerald Bergtrom, Ph.D.
Learning Technology Center
University of Wisconsin – Milwaukee
October 2005

Edited by Tanya Joosten, Alan Aycok, Susan Gifford

Data slicing is a way to see how the demographic background of a student creates pre/misconceptions, and how it influences their interpretation or acceptance of controversial ideas.

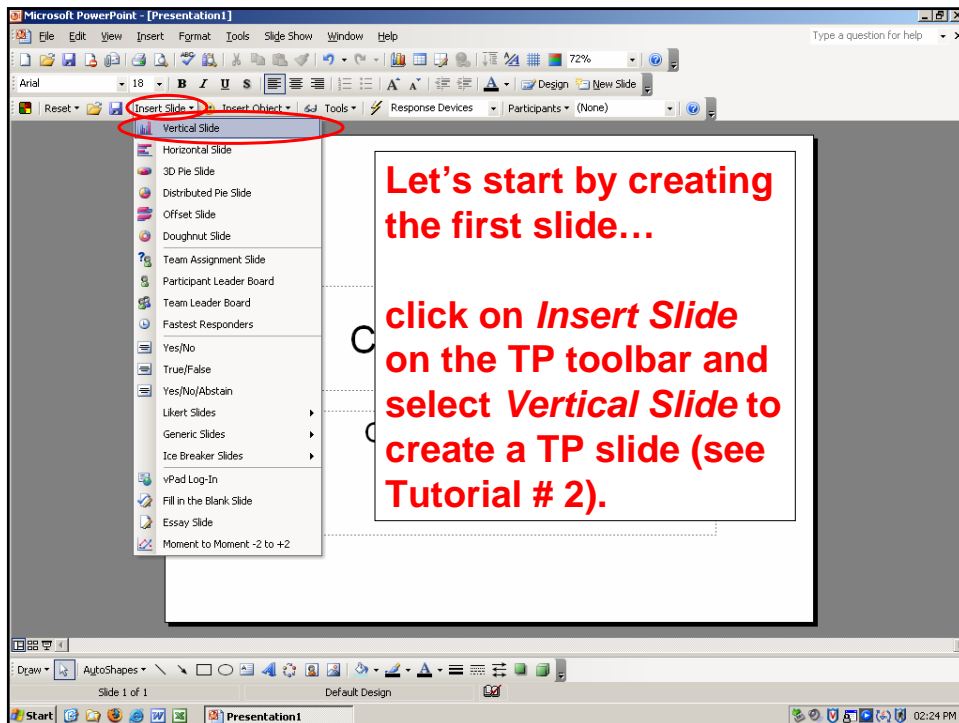
Perhaps the best use of *data slicing* (cross-tabulating) is to compare how different demographic groups answer the same question.

In this tutorial you will:

Create two S&R slides, at least one of which solicits demographic information



Compare the responses to one question with those to the other using data slicing



Microsoft PowerPoint - [Creating a TP demographic slide.ppt]

File Edit View Insert Format Tools Slide Show Window Help

Type a question for help

72%

Arial 18 B I U S

Design New Slide

Reset Insert Slide Insert Object Tools Response Devices Participants (None)

Broadly speaking, my discipline is in

1. Social sciences
2. Humanities
3. Fine arts
4. Natural sciences
5. Professions

Type this stem and response.

Discipline	Percentage
Social sciences	20%
Humanities	20%
Fine arts	20%
Natural sciences	20%
Professions	20%

Slide 7 of 8 Default Design

Start Presentation1 Creating a TP demogr... 02:50 PM

Microsoft PowerPoint - [Creating a TP demographic slide.ppt]

File Edit View Insert Format Tools Slide Show Window Help

Type a question for help

72%

Arial 18 B I U S

Design New Slide

Reset Insert Slide Insert Object Tools Response Devices Participants (None)

The theory of evolution is an educated guess.

1. True
2. False

Now create this slide.

Let's simulate polling so we can ask how training, or an interest in science influences student response to this question.

Response	Percentage
True	50%
False	50%

Slide 7 of 10 Default Design

Start Presentation1 Creating a TP demogr... 03:00 PM

Microsoft PowerPoint - [Creating a TP demographic slide.ppt]

File Edit View Insert Format Tools Slide Show Window Help

Type a question for help

72%

Arial 18 B I U S

Design New Slide

Reset Insert Slide Insert Object Tools Response Devices Participants (None)

Broadly speaking, my discipline is in

1. Social sciences
2. Humanities
3. Fine arts
4. Natural sciences
5. Professions

20% 20% 20% 20% 20%

Return to this slide. Select *simulated data* (next to the lightning bolt) and run the presentation of your two slides.

Draw AutoShapes

Slide 7 of 8 Default Design

Start Presentation1 Creating a TP demogr... 02:50 PM

responses: 200 user feedback: 0 polling: closed

Broadly speaking, my discipline is

1. Social sciences
2. Humanities
3. Fine arts
4. Natural sciences
5. Professions

20% 22% 18% 21% 20%

Social sciences Humanities Fine arts Natural sciences Professions

The bar graphs in this and the next slide show computer-simulated data.

The theory of evolution is an educated guess.

1. True
2. false

Let's 'data slice' to correlate ideas about evolutionary theory with professional interest in the sciences. Highlight and click the *Data Slicing* icon on the TP showbar and...

Response	Percentage
True	50%
False	51%

The theory of evolution is an educated guess.

1. True
2. false

...see this dropdown menu. Click on the + next to the stem of the 'Broadly speaking...' question.

The screenshot shows a window titled "TurningPoint - Data Slicing" with a list of 9 questions. The question "Broadly speaking, my discipline is" is highlighted, and a plus sign (+) is visible next to its stem. Below the window, a bar chart shows the poll results for the question "The theory of evolution is an educated guess.".

Response	Percentage
True	49%
False	51%

The theory of evolution is an educated guess.

1. True
2. false

You should see the response options. Highlight the *Social Sciences* answer option and click select...

49%

True false

The theory of evolution is an educated guess.

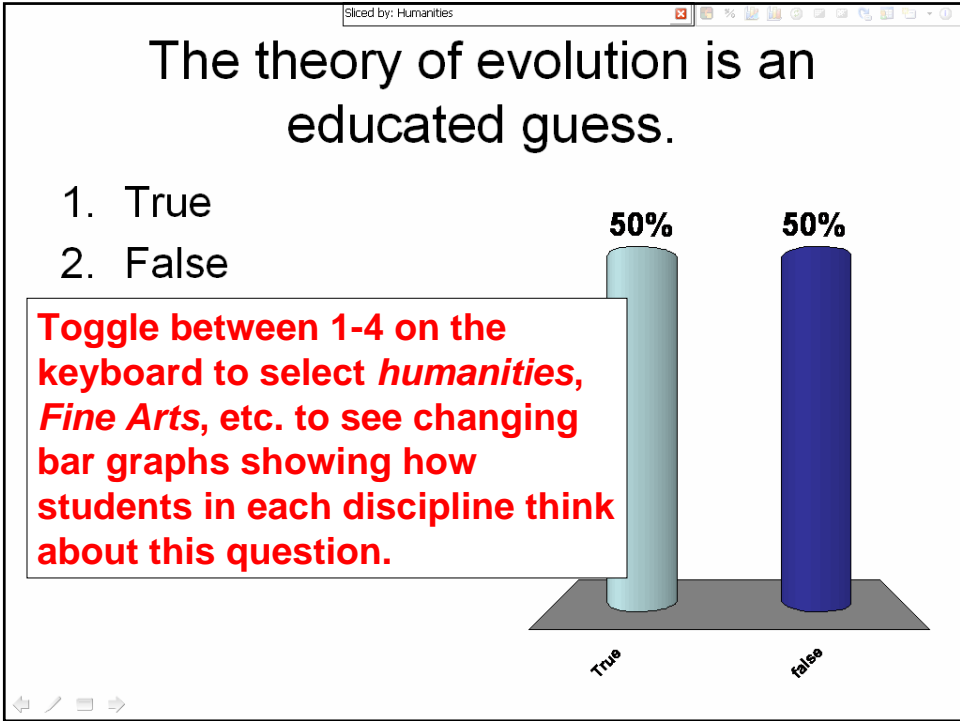
1. True
2. False

Your selection appears in the showbar; the bar graph now shows the percentage of social scientists that think the theory of evolution is an educated guess.

100%

0%

True false



The end