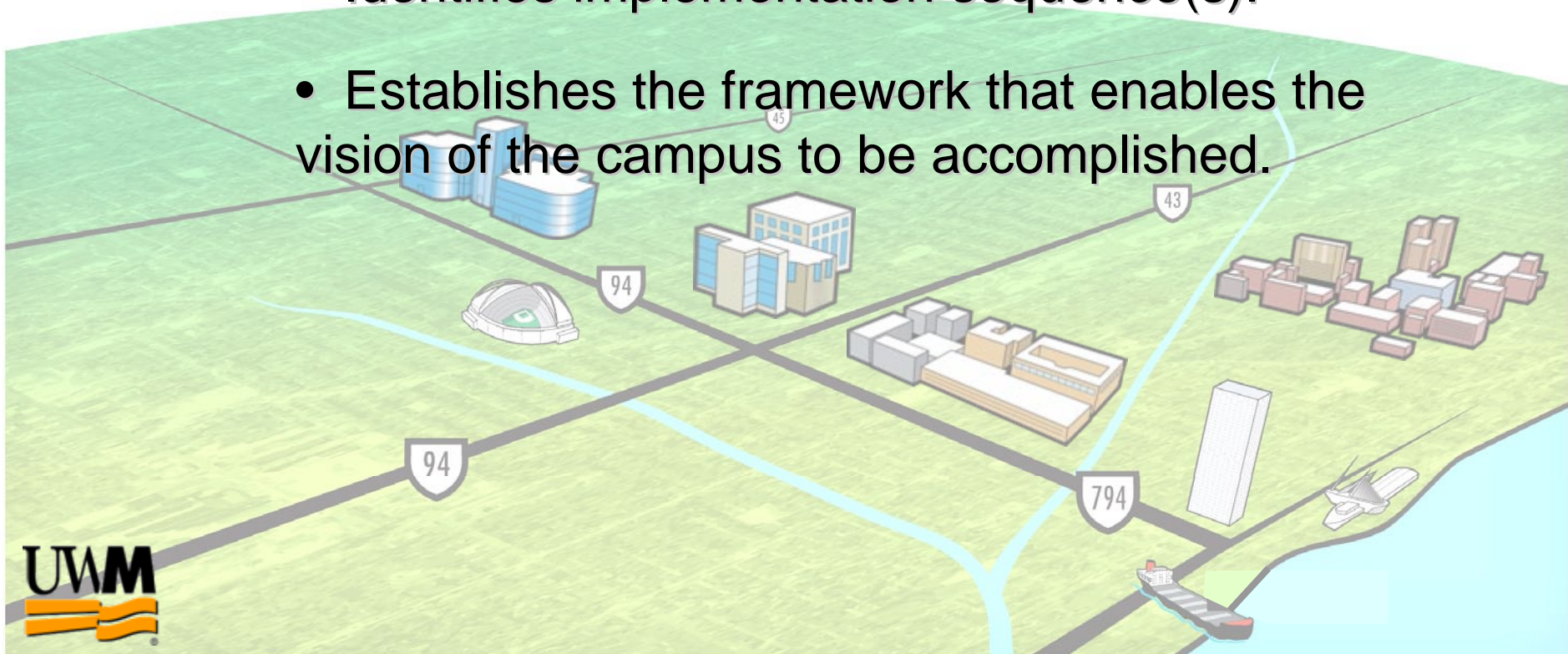
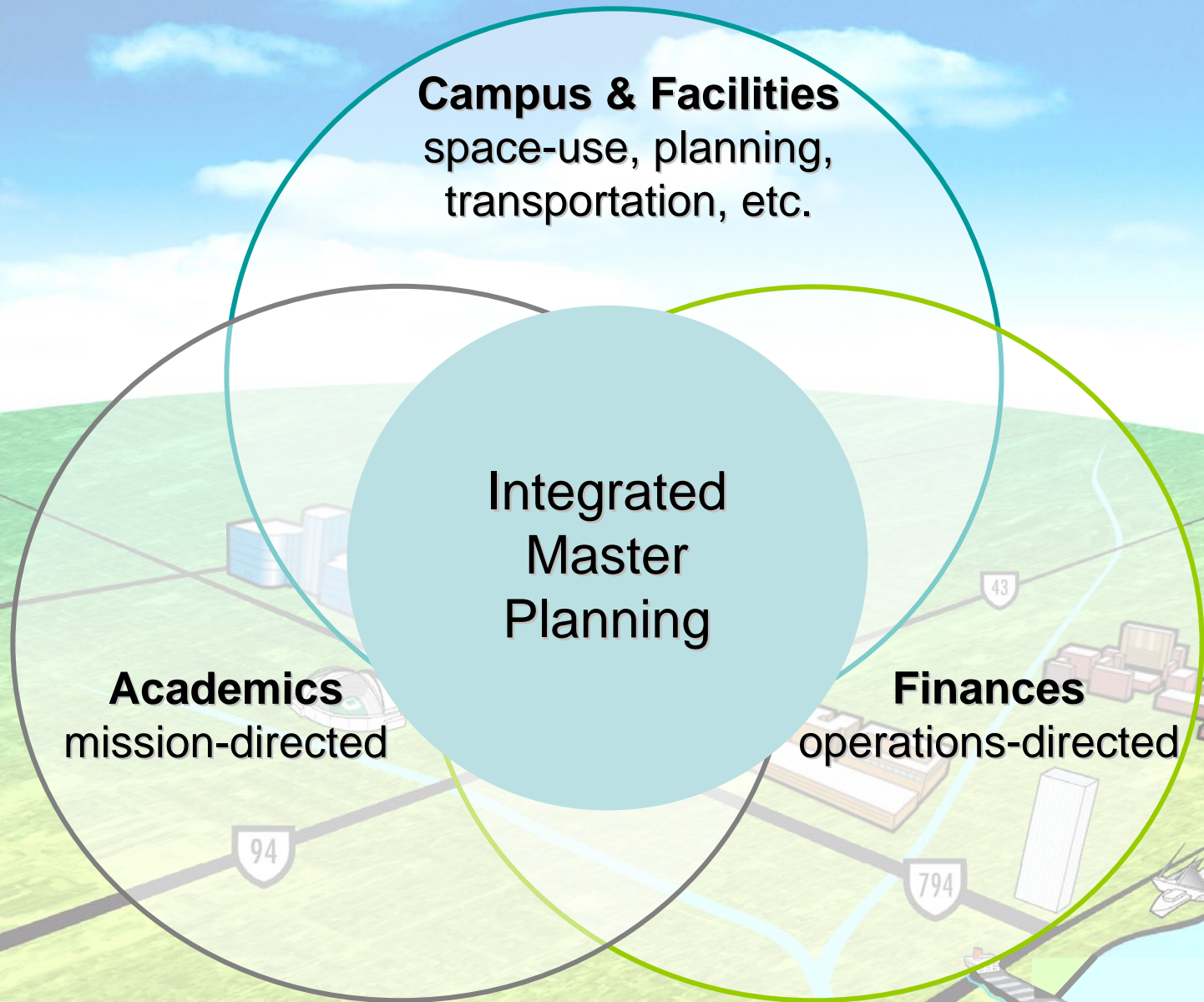


What is a Master Plan?

- Defines space-use needs and organizational principles in alignment with academic planning.
- Identifies implementation sequence(s).
- Establishes the framework that enables the vision of the campus to be accomplished.



An Integrated Master Plan



UWM Master Planning Process: “Rigorous and Defensible”

Academic Alignment

Campus Facilities Planning

Observations and Supporting Investigations

- Space Utilization and Needs Assessment
- Transportation and Parking
- Utilities and Other Infrastructure
- Student Housing

Conceptual Plan and Principles

Site/Area/Precinct Studies

Final Integration Plan

Design Guidelines

Implementation Planning

Implementation Planning

- “Scenario Planning”: Strategic method to identify flexible & phased long-term plans.
- Costing and financial modeling using both traditional and alternative funding sources.
- Matrix format that identifies: specific initiatives/actions, assigns responsibility, determines costs, identifies funding source, evaluates dependent/independent actions, identifies sequences and time frames.
- Simultaneously creative and reality-based.

Master Plan Schedule

