

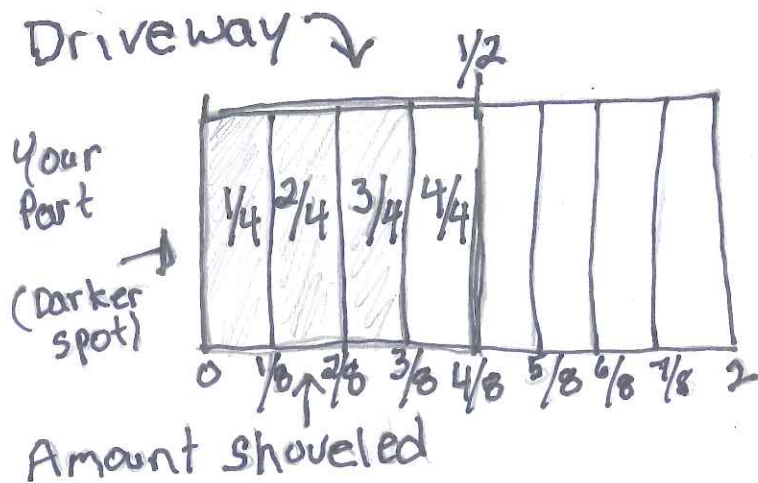
A

Snow Day Chores

I have to shovel $\frac{1}{2}$ of the driveway. Before lunch I shoveled $\frac{3}{8}$ of the whole driveway. What fractional part of my share of the driveway did I shovel before lunch?

Answer: $\frac{3}{4}$ of the $\frac{1}{2}$

Draw and label a picture representing the fractional parts of the shoveled driveway.



Write an equation that describes the fraction of driveway you shoveled.

$$\frac{1 \times 4}{2 \times 4} (1 \text{ whole}) = \frac{4}{8} - \frac{1}{8} = \frac{3}{8} \text{ or } \frac{3}{4}$$

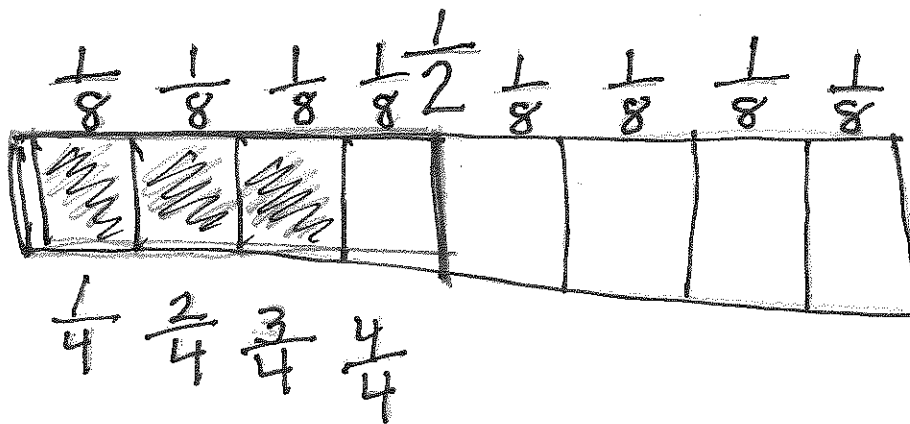
B

Snow Day Chores

I have to shovel $\frac{1}{2}$ of the driveway. Before lunch I shoveled $\frac{3}{8}$ of the whole driveway. What fractional part of my share of the driveway did I shovel before lunch?

Answer: $\frac{3}{4}$ of my part

Draw and label a picture representing the fractional parts of the shoveled driveway.



Write an equation that describes the fraction of driveway you shoveled.

$$\frac{3}{8} \div \frac{1}{2} =$$

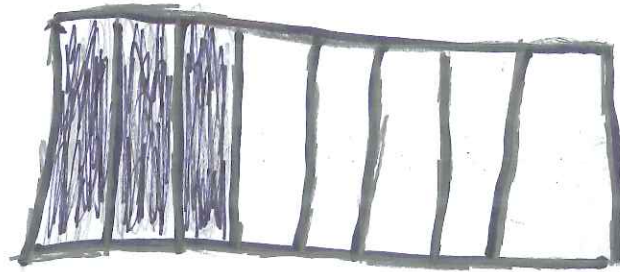
$$\frac{3}{8} \times \frac{2}{1} = \frac{6}{8} = \frac{3}{4}$$

Snow Day Chores

I have to shovel $\frac{1}{2}$ of the driveway. Before lunch I shoveled $\frac{3}{8}$ of the whole driveway. What fractional part of my share of the driveway did I shovel before lunch?

Answer: $\frac{4}{10}$

Draw and label a picture representing the fractional parts of the shoveled driveway.



Write an equation that describes the fraction of driveway you shoveled.

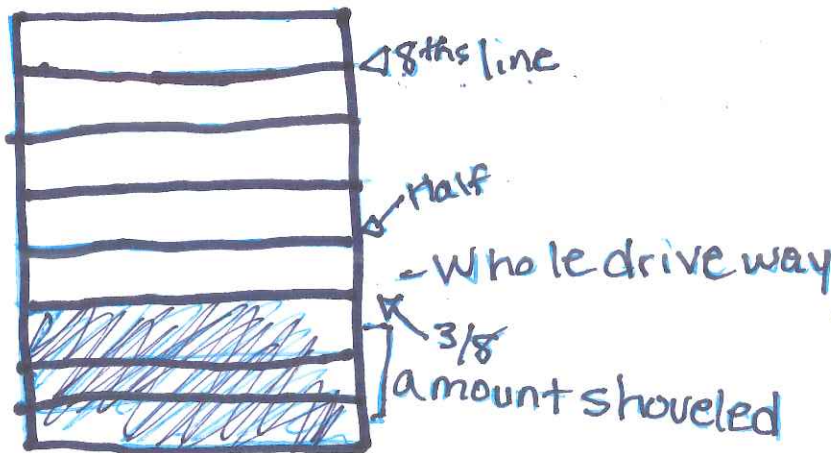
$$\frac{3}{8} + \frac{1}{2} = \frac{4}{10}$$

Snow Day Chores

I have to shovel $\frac{1}{2}$ of the driveway. Before lunch I shoveled $\frac{3}{8}$ of the whole driveway. What fractional part of my share of the driveway did I shovel before lunch?

Answer: $\frac{3}{4}$ of the Driveway

Draw and label a picture representing the fractional parts of the shoveled driveway.



Write an equation that describes the fraction of driveway you shoveled.

$\frac{3}{8} = \frac{3}{4}$ of $\frac{1}{2}$

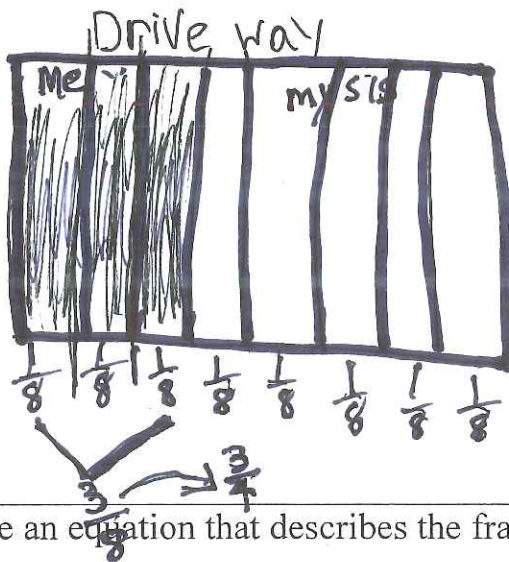
E

Snow Day Chores

I have to shovel $\frac{1}{2}$ of the driveway. Before lunch I shoveled $\frac{3}{8}$ of the whole driveway. What fractional part of my share of the driveway did I shovel before lunch?

Answer: $\frac{3}{4}$ of my half.

Draw and label a picture representing the fractional parts of the shoveled driveway.



Write an equation that describes the fraction of driveway you shoveled.

$$\frac{3}{8} \div 2 = \frac{3}{4}$$

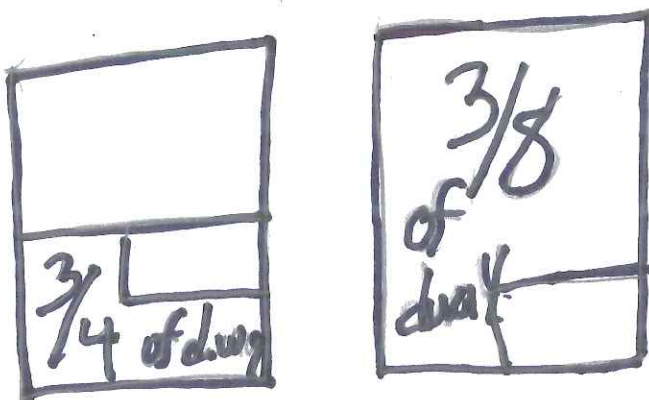
Because it is HALF of what you have to shovel

Snow Day Chores

I have to shovel $\frac{1}{2}$ of the driveway. Before lunch I shoveled $\frac{3}{8}$ of the whole driveway. What fractional part of my share of the driveway did I shovel before lunch?

Answer: $\frac{3}{4}$

Draw and label a picture representing the fractional parts of the shoveled driveway.



Write an equation that describes the fraction of driveway you shoveled.

$$\frac{1}{2} \div \frac{3}{4} = \frac{1}{4}$$